



2100 SOUTH CLEARWATER DRIVE
DES PLAINES, ILLINOIS 60018-5999

FITTING NO.

E20

SUBMITTED MODEL NO.

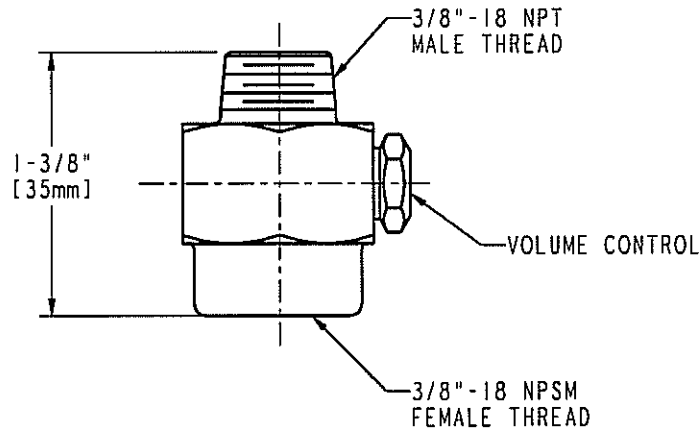
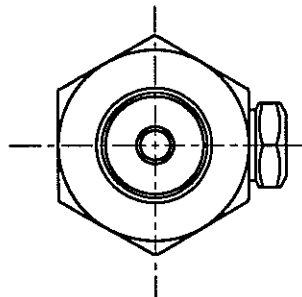
JOB NAME

ITEM NO.

SUBMITTED AS SHOWN

SUBMITTED AS NOTED

SEE ATTACHED FOR
SUBMITTED MODIFICATION



DIMENSIONS IN INCHES AND [MILLIMETERS].

TECHNICAL DATA

- NON-POSITIVE SHUT-OFF
- CAN BE ADJUSTED TO A MINIMUM FLOW RATE OF APPROXIMATELY 8 OUNCES PER MINUTE
- VOLUME CONTROL
- FINISH: CHROME PLATE

DATE: 4-29-03

BY: JAR

CHK'D:

APP'D: *AT*

REV: B

E20

ROUGHING IN DIMENSIONS MAY VARY AND ARE SUBJECT TO CHANGE. NO RESPONSIBILITY IS ASSUMED FOR USE OF SUPERCEDED OR VOIDED DATA.