

ROUGHING IN DIMENSIONS MAY VARY AND ARE SUBJECT TO CHANGE. NO RESPONSIBILITY IS ASSUMED FOR USE OF SUPERCEDED OR VOIDED DATA.



2100 South Clearwater Drive
Des Plaines, IL 60018
Phone: 847-803-5000
Fax: 847-803-5454
www.chicagofaucets.com

ROUGH-IN

FITTING NO.

625-XSLOJKABNF

SUBMITTED MODEL NO.

BY: JAR

DATE: 04-07-22

CHK: *SJD*

REV:

FOR TECHNICAL ASSISTANCE
1-800-TEC-TRUE (1-800-832-8783)

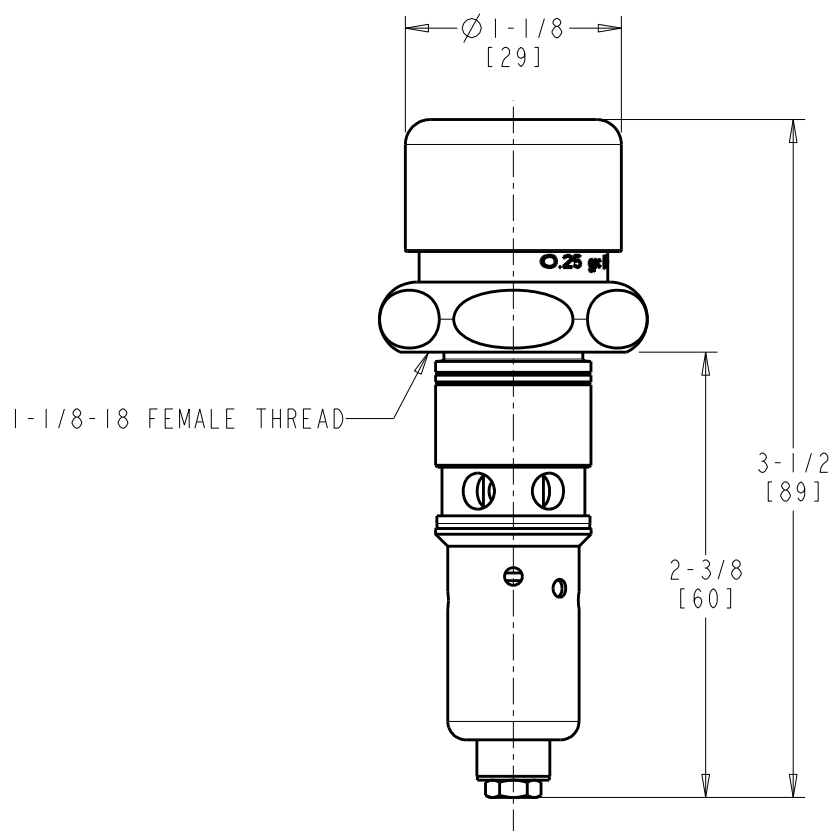
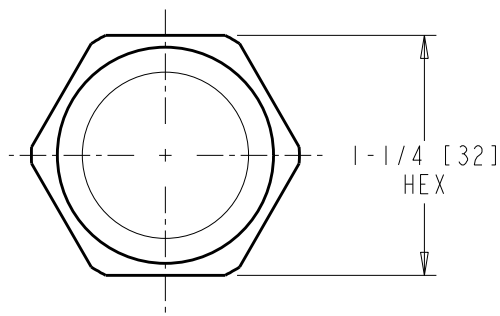
SUBMITTED AS SHOWN

SUBMITTED AS NOTED

SEE ATTACHED FOR
SUBMITTED MODIFICATION

JOB NAME

ITEM NO.



DIMENSIONS ARE IN INCHES AND [MILLIMETERS].

TECHNICAL DATA

- NAIAD METERING CARTRIDGE WITH ADJUSTABLE CYCLE TIME CLOSURE
- 333-073KJKABNF SLOW DASHPOT ASSEMBLY
- SHORT STEM FOR EXPOSED CAPS
- FOR USE WITH FOOT OPERATED PEDAL BOXES
- FINISH: NO FINISH

- NSF/ANSI 372 LOW LEAD CONTENT