

Hygiene, Salon, Mortuary Fittings 910-GCP

Product Type

Bed pan cleaner with remote pedal valve

Features & Specifications

- Male rose spray for use with bed pan cleaner
- Naiad metering cartridge with fast cycle time closure
- Elevated vacuum breaker assembly
- Complies with the requirements of the Buy American Act of 1933.
- CFNow! Item Ships in 3 Days



Performance Specification

- Rated Operating Pressure: 20-125 PSI
- Rated Operating Temperature: 40-140°F

Warranty

- 5-Year Limited Cartridge Warranty
- Lifetime Limited Faucet Warranty
- 1-Year Limited Finish Warranty

Codes & Standards

-  ASME A112.18.1/CSA B125.1
-  NSF/ANSI/CAN 61, Section 9

Job Name _____

Item Number _____

Section/Tag _____

Model Specified _____

Architect _____

Engineer _____

Contractor _____

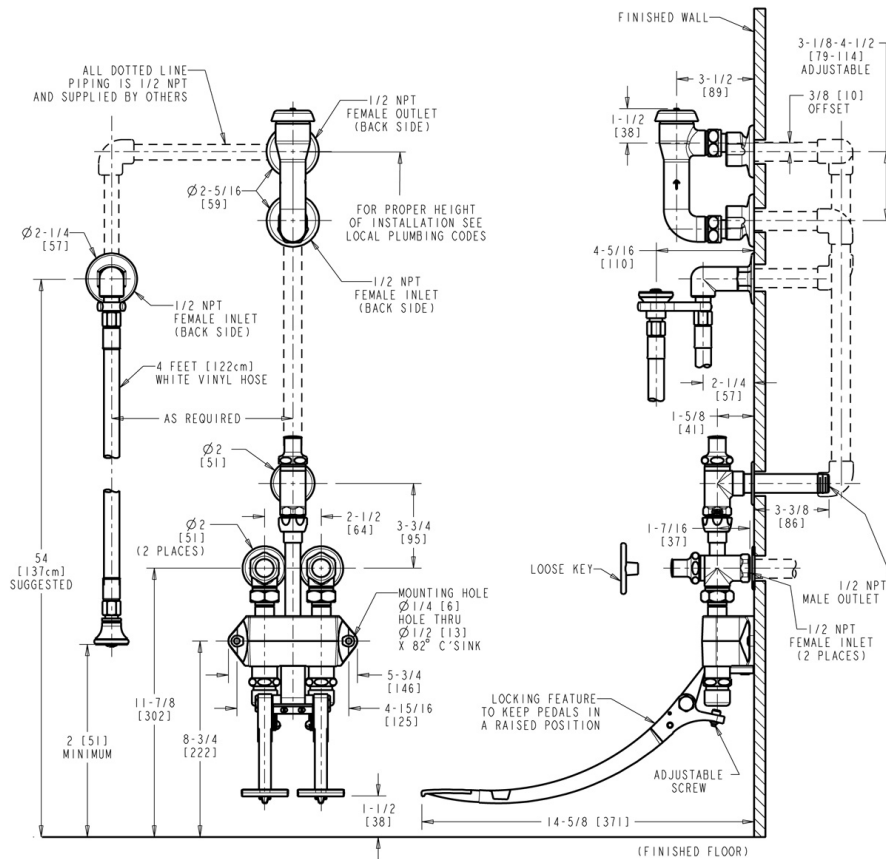
Submitted as Shown Submitted with Variations

Date _____



Architect/Engineer Specification

Chicago Faucets No. 910-GCP, Bed Pan Cleaner with pedal valve, 4 ft. white vinyl hose, and loose key, wall-mounted, chrome plated. 2.0 GPM Flow at 60 PSI. Full-flow male rose spray. NAIAD rebuildable self-closing metering cartridge, immediate shut-off, opens with push. Two 3/8" offset adjustable supply arms with 1/2" NPT female thread. Two 1/2" NPT female thread inlets. 1/2" NPT male thread outlet. Locking feature to keep pedals in a raised position. This product is tested and certified to industry standards: ASME A112.18.1/CSA B125.1, and Certified to NSF/ANSI 61, Section 9.



Operation and Maintenance

Installation should be in accordance with local plumbing codes. Flush all pipes thoroughly before installation. After installation, remove spout outlet or flow control and flush faucet thoroughly to clear any debris. Care should be taken when cleaning the product. Do not use abrasive cleaners, chemicals or solvents as they can result in surface damage. Use mild soap and warm water for cleaning and protecting the life of Chicago Faucet products. For specific operation and maintenance refer to the installation instructions and repair parts documents that are located at www.chicagofaucets.com.

Chicago Faucets, member of the Geberit Group, is the leading brand of commercial faucets and fittings in the United States, offering a complete range of products for schools, laboratories, hospitals, office buildings, food service, airports and sport facilities. Call 1.800.TECTRUE or 1.847.803.5000 Option 1 for installation or other technical assistance.

