

CHICAGO FAUCETS
a Geberit company

2100 South Clearwater Drive
Des Plaines, IL 60018
Phone: 847-803-5000
Fax: 847-803-5454
www.chicagofaucets.com

REPAIR PARTS

BY: SID DATE: 10-31-11
CHK: *[Signature]* REV:

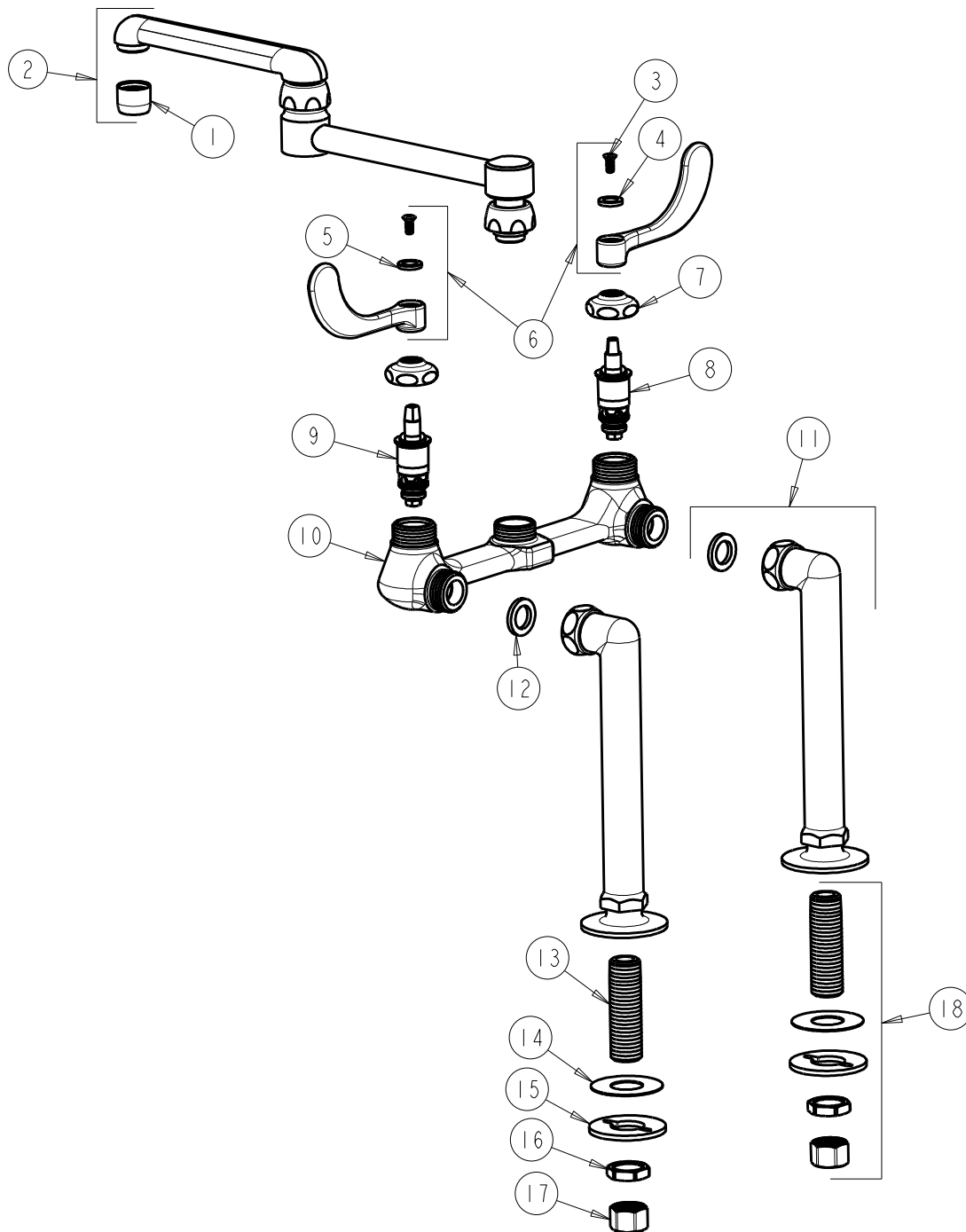
FITTING NO.

941-DJ13-317CP

SUBMITTED MODEL NO.

ITEM NO.

FOR TECHNICAL ASSISTANCE
1-800-TEC-TRUE (1-800-832-8783)



| ITEM | PART NO. | DESCRIPTION | ITEM | PART NO. | DESCRIPTION |
|------|--------------|------------------------------|------|--------------|----------------------------------|
| 1 | E3JKCP | SOFTFLO AERATOR OUTLET | 10 | ----- | VALVE BODY (NOT SOLD SEPARATELY) |
| 2 | DJ13JKCP | SPOUT | 11 | LSJKCP | TALL ANGLE INLET SUPPLY ARM |
| 3 | 420-010JKRCF | SCREW, 10-32 UNC PH 1/2 | 12 | 1-011JKNF | WASHER, .97 X .62 X .12 |
| 4 | 633-023JKNF | INDEX BUTTON (RED) | 13 | 748-002JKRBF | INLET SHANK 1/2-NPSM |
| 5 | 633-123JKNF | INDEX BUTTON (BLUE) | 14 | 52-007JKNF | WASHER, RUBBER |
| 6 | 317-PRJKCP | HANDLE, 4" WRISTBLADE (PAIR) | 15 | 807-112JKNF | WASHER |
| 7 | 1-214JKCP | CAP | 16 | 49-004JKRBF | LOCKNUT |
| 8 | 1-100XTJKNF | QUATURN CARTRIDGE (LH) | 17 | 49-005JKRBF | COUPLING NUT |
| 9 | 1-099XTJKNF | QUATURN CARTRIDGE (RH) | 18 | 748-002JKRBF | SHANK ASSEMBLY |