

CHICAGO FAUCETS
a Geberit company

2100 South Clearwater Drive
Des Plaines, IL 60018
Phone: 847-803-5000
Fax: 847-803-5454
www.chicagofaucets.com

REPAIR PARTS

FITTING NO.

937-WHLESS216-28CP

SUBMITTED MODEL NO.

BY: SID

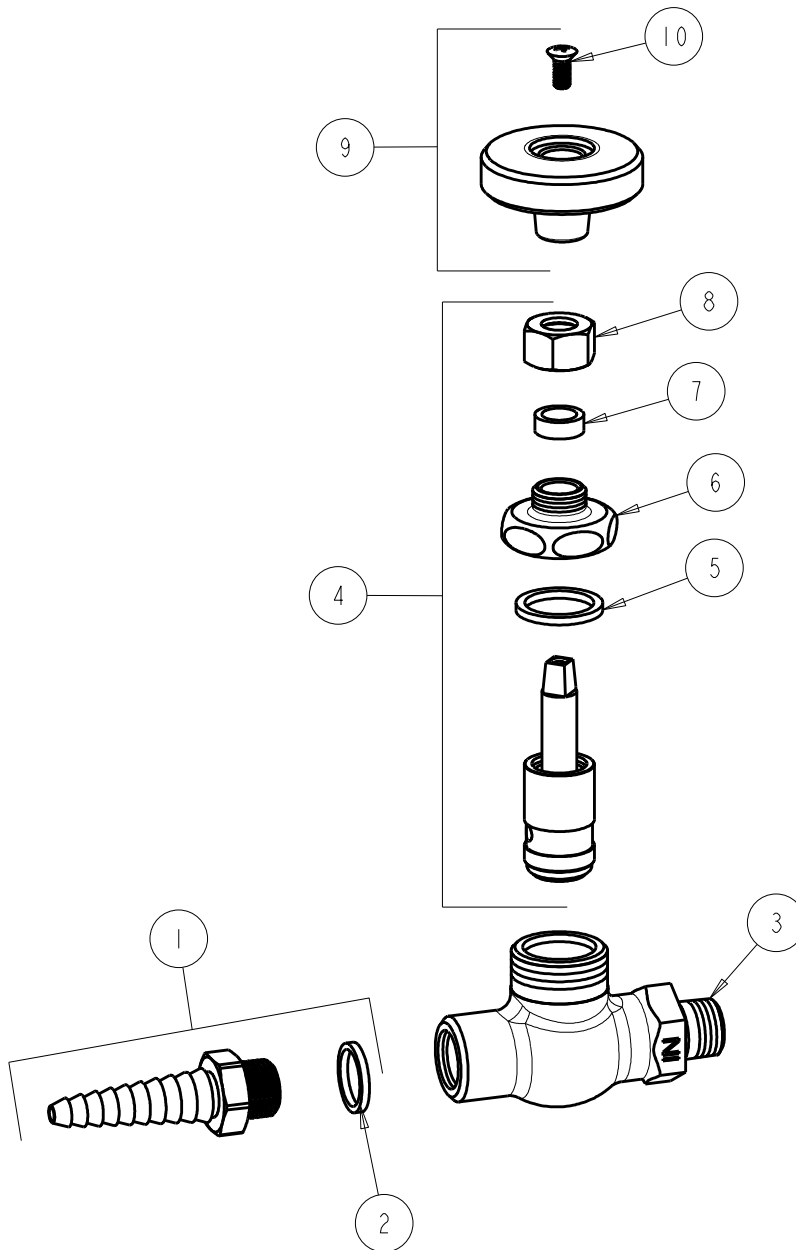
DATE: 10-20-11

CHK: *[Signature]*

REV:

ITEM NO.

FOR TECHNICAL ASSISTANCE
1-800-TEC-TRUE (1-800-832-8783)



ITEM	PART NO.	DESCRIPTION	ITEM	PART NO.	DESCRIPTION
1	E7JKCP	SERRATED HOSE NOZZLE	7	244-217JKNF	PACKING
2	229-003JKNF	WASHER	8	937-010JKCP	NUT
3	---	BODY (NOT SOLD SEPARATELY)	9	945-LESS216-28JKCP	WHEEL HANDLE
4	962-XJKNF	NEEDLE VALVE UNIT	10	420-010JKRCF	SCREW, 10-32 UNC PH 1/2
5	1-043JKNF	GASKET, CAP 1 X .80 X .09			
6	937-018JKRCF	CAP NUT			