

**CHICAGO FAUCETS**  
a Geberit company

2100 South Clearwater Drive  
Des Plaines, IL 60018  
Phone: 847-803-5000  
Fax: 847-803-5454  
www.chicagofaucets.com

# REPAIR PARTS

FITTING NO.

**937-CHLESSE7AGVCP**

SUBMITTED MODEL NO.

BY: SID

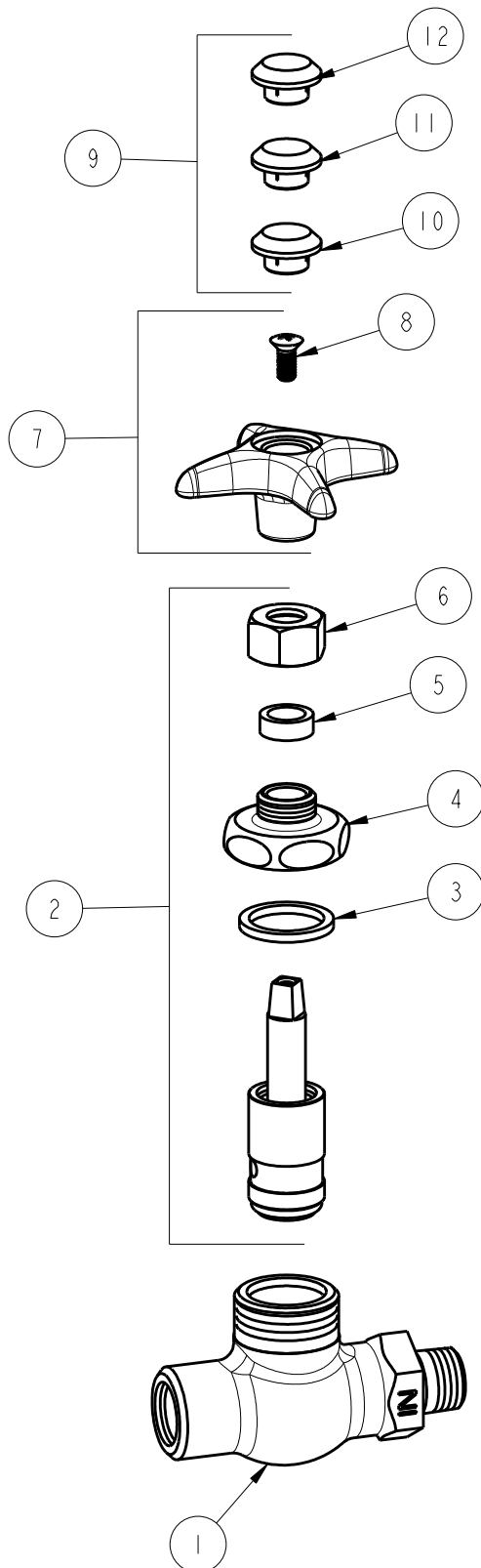
DATE: 06-20-11

CHK: *[Signature]*

REV:

ITEM NO.

**FOR TECHNICAL ASSISTANCE**  
**1-800-TEC-TRUE (1-800-832-8783)**



ITEM	PART NO.	DESCRIPTION
1	---	BODY (NOT SOLD SEPARATLY)
2	962-XJKNF	NEEDLE VALVE UNIT
3	1-043JKNF	GASKET, CAP 1 X .80 X .09
4	937-018JKRCF	CAP NUT
5	244-217JKNF	PACKING
6	937-010JKCP	NUT
7	204-LESS216-28JKCP	HANDLE ASSEMBLY
8	420-010JKRCF	SCREW, 10-32 UNC PH 1/2
9	216-PPJKNF	PRE-PACK (AIR, GAS, VAC)
10	216-278JKNF	BUTTON 'AIR'
11	216-328JKNF	BUTTON 'GAS'
12	216-378JKNF	BUTTON 'VAC'