

CHICAGO FAUCETS
a Geberit company

2100 South Clearwater Drive
Des Plaines, IL 60018
Phone: 847-803-5000
Fax: 847-803-5454
www.chicagofaucets.com

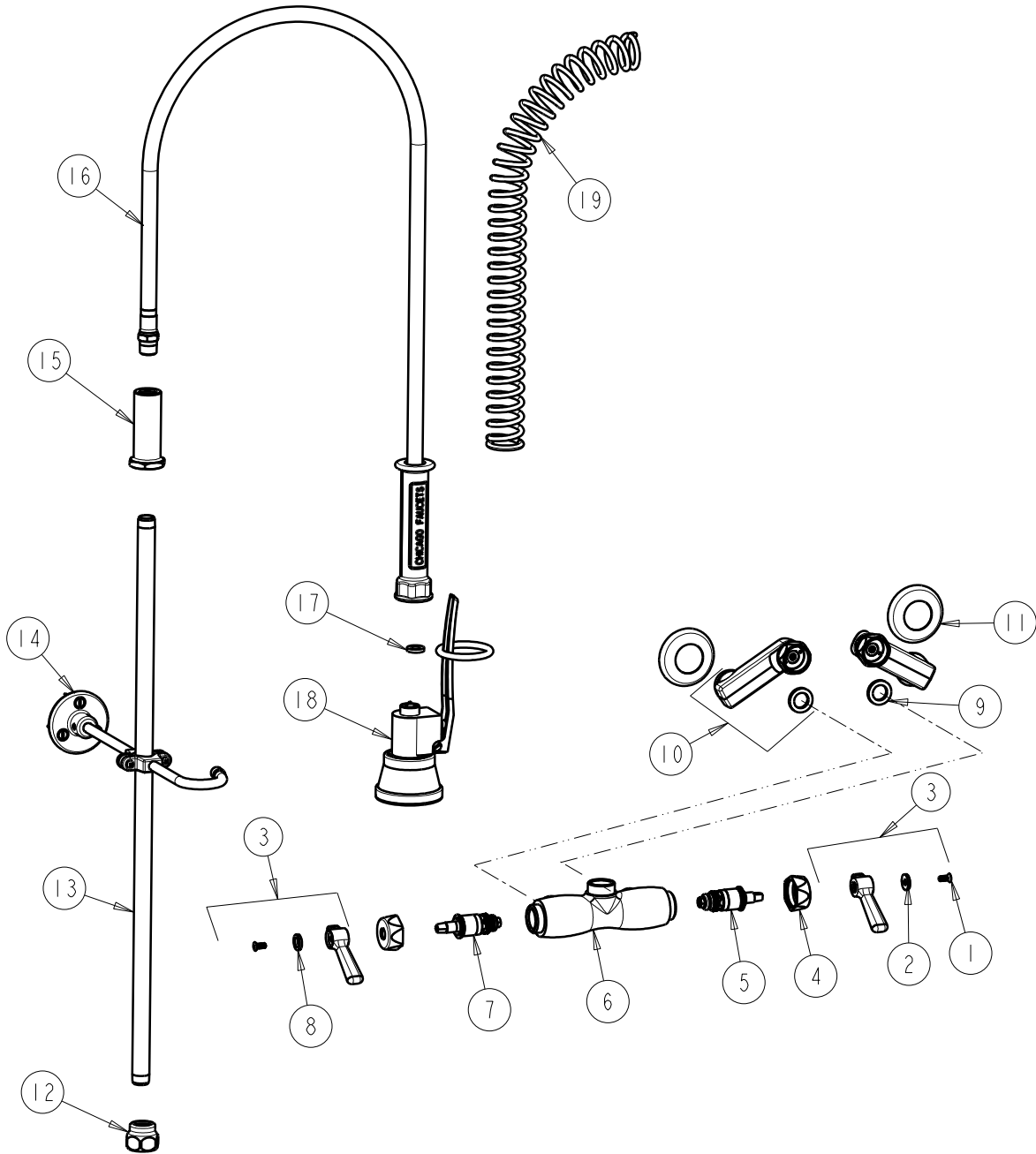
REPAIR PARTS

BY: SID DATE: 07-20-10
CHK: *[Signature]* REV: 07-28-10

FITTING NO.
923-HCTFCP
SUBMITTED MODEL NO.

ITEM NO.

FOR TECHNICAL ASSISTANCE
1-800-TEC-TRUE (1-800-832-8783)



ITEM	PART NO.	DESCRIPTION	ITEM	PART NO.	DESCRIPTION
1	420-010JKRCF	SCREW, 10-32 UNC PH 1/2	11	1-055JKCP	FLANGE
2	633-123JKNF	INDEX BUTTON (BLUE)	12	BA2JKCP	ADAPTER 3/8 NPT X 1 1/16-18 UNEF
3	369-PRJKCP	LEVER HANDLE ASSEMBLY (PAIR)	13	919-039JKCP	3/8" NPT X 23" RISER
4	444-005JKCP	CAP	14	902-MHJKCP	PIPE STRAP AND HOOK ASSEMBLY
5	1-099XTJKNF	QUATURN UNIT (RH)	15	919-038JKCP	GUIDE SHANK
6	---	VALVE BODY (NOT SOLD SEPARATELY)	16	83-44NF	HOSE AND HANDLE ASSEMBLY
7	1-100XTJKNF	QUATURN UNIT (LH)	17	919-243JKNF	GASKET, .685 X .375 X .125
8	633-023JKNF	INDEX BUTTON (RED)	18	99TF	TRIPLE FORCE PRE-RINSE VALVE
9	1-011JKNF	WASHER, .97 X .62 X .12	19	919-014JKCP	SPRING
10	HCJKCP	ARM ASSEMBLY			