

CHICAGO FAUCETS

a Geberit company

2100 South Clearwater Drive
Des Plaines, IL 60018
Phone: 847-803-5000
Fax: 847-803-5454
www.chicagofaucets.com

REPAIR PARTS

FITTING NO.

923-ASHC613AABCP

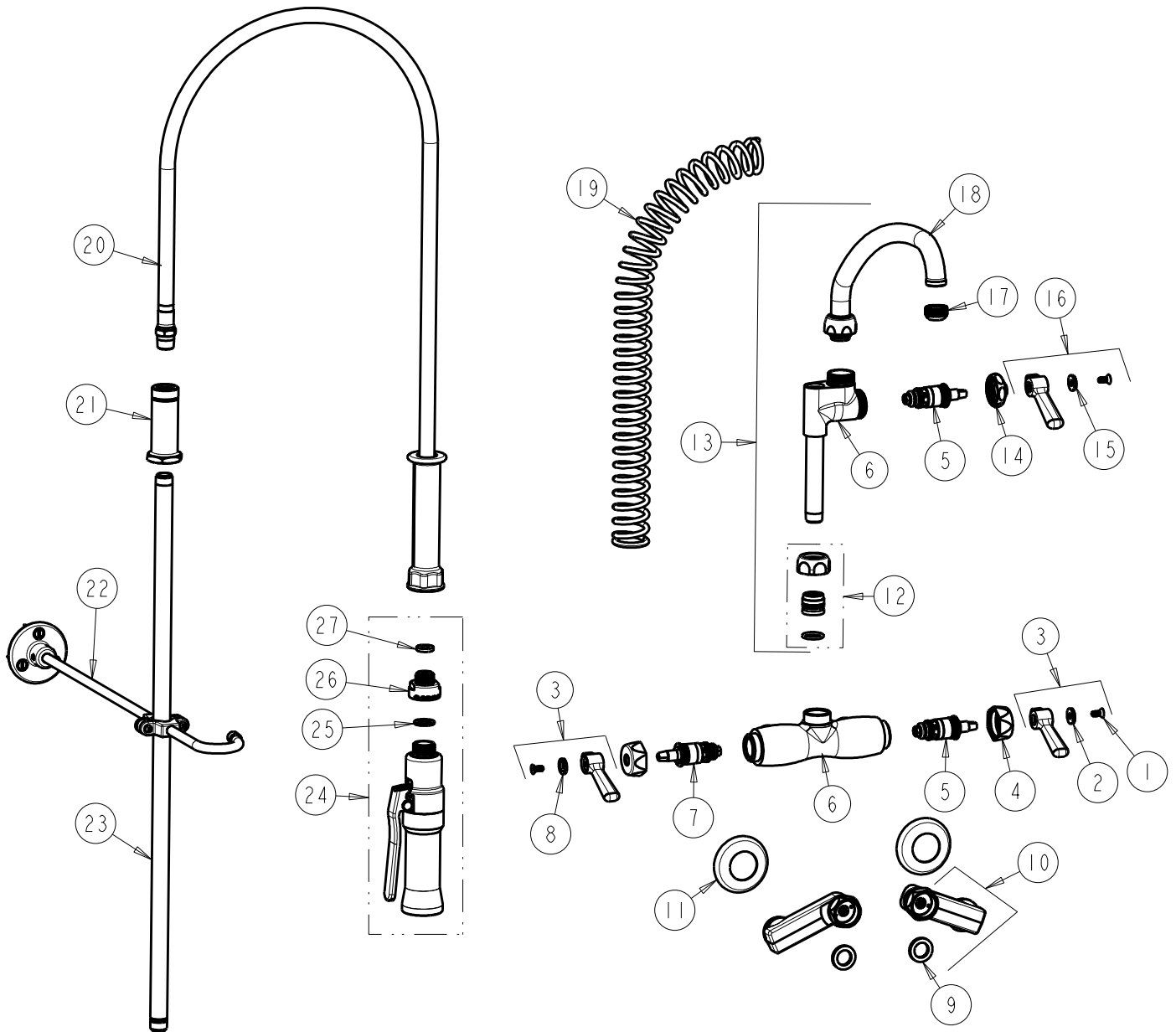
SUBMITTED MODEL NO.

ITEM NO.

BY: JAR DATE: 03-26-15

CHK: *JAR* REV:

FOR TECHNICAL ASSISTANCE
1-800-TEC-TRUE (1-800-832-8783)



ITEM	PART NO.	DESCRIPTION	ITEM	PART NO.	DESCRIPTION
1	420-020JKNF	SCREW, 1/8 FLAT HEX HEAD X 1/2	15	633-223JKNF	INDEX BUTTON (WHITE)
2	633-123JKNF	INDEX BUTTON (BLUE)	16	369-PLJKCP	PLAIN LEVER HANDLE
3	369-PRJKCP	HANDLE, 2-3/8" LEVER (PAIR)	17	E1JKABRCF	OUTLET, QUIXTOP
4	444-005JKCP	CAP	18	L9LEOJKAB	SPOUT, 9-1/2 C-C
5	1-099XTJKABNF	QUATURN CARTRIDGE (RH)	19	919-014JKCP	SPRING
6	-----	VALVE BODY (NOT SOLD SEPARATELY)	20	83-44ABNF	44" HOSE AND HANDLE ASSEMBLY
7	1-100XTJKABNF	QUATURN CARTRIDGE (LH)	21	919-038JKABCP	GUIDE SHANK
8	633-023JKNF	INDEX BUTTON (RED)	22	902-MHJKCP	PIPE STRAP AND HOOK ASSEMBLY
9	1-011JKABNF	WASHER, .97 X .62 X .12	23	919-039JKABCP	3/8" NPT X 23" RISER
10	HCJKABCP	ARM ASSEMBLY w/WASHER	24	99-ASAB	ADJUSTABLE SPRAY PRE-RINSE VALVE
11	1-055JKCP	FLANGE	25	919-244JKABNF	GASKET, .825 X .590 X .072
12	143-PPJKABNF	PRE-PACK	26	919-046JKABRCF	ADAPTER, PRE-RINSE
13	613-AABCP	PRE-RINSE ADAPTA FITTING	27	919-243JKABNF	GASKET, .685 X .375 X .125
14	1-214JKCP	CAP			