



a Geberit company

2100 South Clearwater Drive  
Des Plaines, IL 60018  
Phone: 847-803-5000  
Fax: 847-803-5454  
www.chicagofaucets.com

# REPAIR PARTS

BY: JAR DATE: 01-25-13

CHK: *[Signature]* REV: 07-25-14

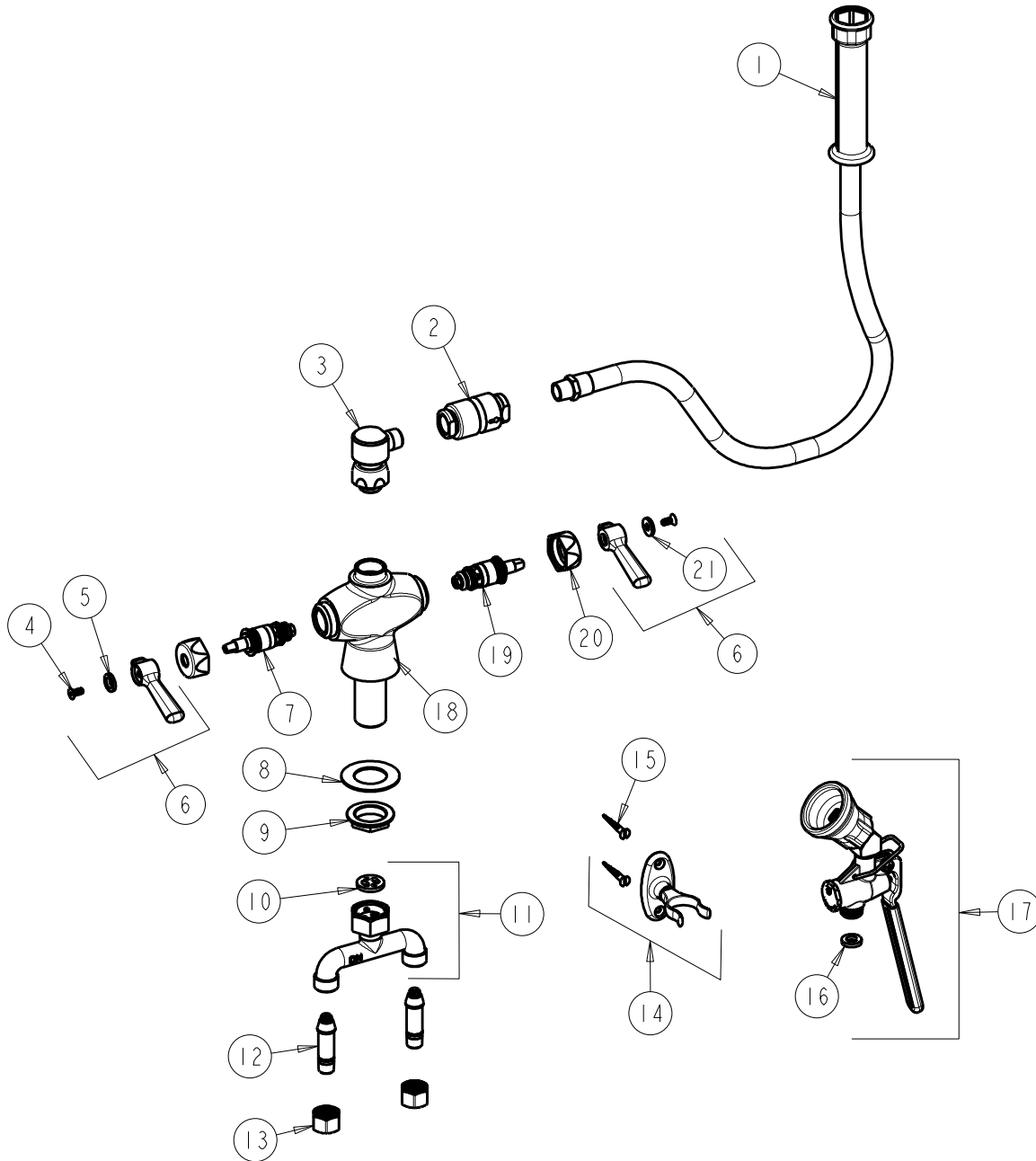
FITTING NO.

919-VBHS90ANGABCP

SUBMITTED MODEL NO.

ITEM NO.

**FOR TECHNICAL ASSISTANCE**  
1-800-TEC-TRUE (1-800-832-8783)



ITEM	PART NO.	DESCRIPTION	ITEM	PART NO.	DESCRIPTION
1	83-44ABNF	HOSE & HANDLE 44"	12	58-018KJKABRBF	TAIL PIECE ASSEMBLY
2	SP3524KJKABCP	BACK-FLO PREVENTER	13	49-005JKRBF	COUPLING NUT
3	686-118KJKABCP	ELBOW, SWING ASSEMBLY	14	853-CP	WALL HOOK ASSEMBLY
4	420-020JKNF	SCREW, 1/8 FLAT HEX HEAD X 1/2	15	173-006JKCP	FLAT HEAD WOOD SCREW
5	633-023JKNF	INDEX BUTTON (RED)	16	919-243JKABNF	GASKET, .685 X .375 X .125
6	369-PRJKCP	HANDLE, 2-3/8 LEVER (PAIR)	17	90-ANGABCP	PRE-RINSE ANGLE VALVE LOW FLOW
7	1-100XTJKABNF	QUATURN CARTRIDGE (LH)	18	-----	VALVE BODY (NOT SOLD SEPARATELY)
8	50-014JKNF	STEEL WASHER	19	1-099XTJKABNF	QUATURN CARTRIDGE (RH)
9	50-003JKRBF	LOCKNUT	20	444-005JKCP	CAP
10	50-008JKABNF	RUBBER WASHER	21	633-123JKNF	INDEX BUTTON (BLUE)
11	50-010KJKABRBF	TEE CONNECTION ASSEMBLY			