



a Geberit company

2100 South Clearwater Drive
Des Plaines, IL 60018
Phone: 847-803-5000
Fax: 847-803-5454
www.chicagofaucets.com

REPAIR PARTS

BY: JAR DATE: 09-26-06

CHK: *[Signature]* REV: 09-05-14

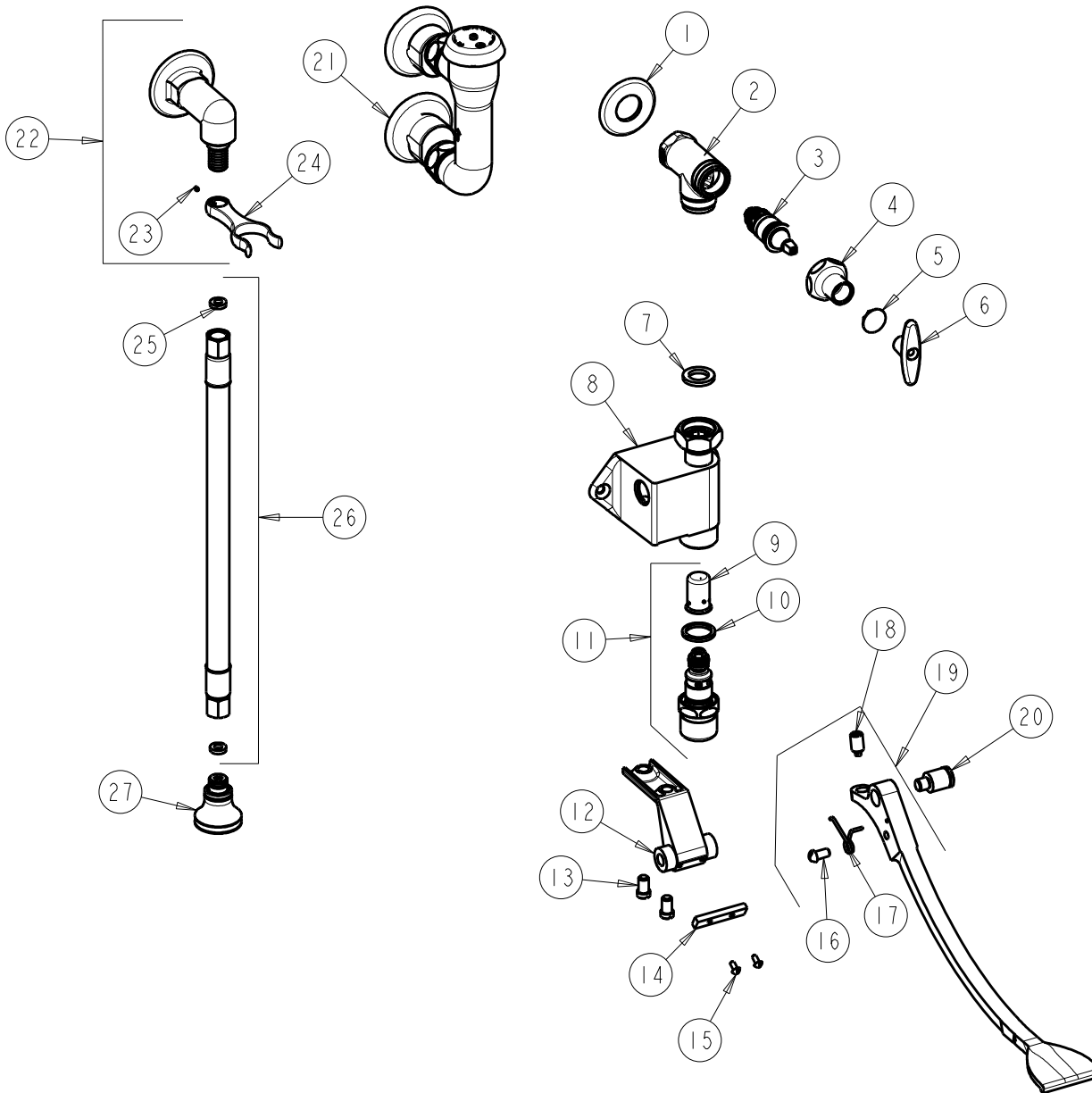
FITTING NO.

910-G806CP

SUBMITTED MODEL NO.

ITEM NO.

FOR TECHNICAL ASSISTANCE
1-800-TEC-TRUE (1-800-832-8783)



ITEM	PART NO.	DESCRIPTION	ITEM	PART NO.	DESCRIPTION
1	417-019JKCP	FLANGE, 1.94 X .88 X .11	15	76-008JKNF	SCREW, ROUND HEAD 6-32
2	-----	VALVE BODY (NOT SOLD SEPARATELY)	16	173-032JKNF	SCREW, ROUND HEAD 1/4-20 X 1/2
3	217-XTLHJKABNF	CARTRIDGE, SLO-COMPRESSION (LH)	17	834-011JKNF	SPRING, RH PEDAL
4	1-246JKCP	NUT, CAP LOOSE KEY 1-1/8-18 UNEF	18	745-025JKNF	SCREW, PEDAL 3/8-24 UNF
5	1-144JKCP	BUTTON	19	834-207KJKNF	PEDAL ASSEMBLY
6	293-006JKRCF	TEE HANDLE (INCLUDES SCREW)	20	625-061JKRCF	BOLT, SHOULDER 3/8-24 UNF X 5/8 HEX
7	1-011JKABNF	WASHER, .97 X .62 X .12	21	892-GABCP	ELEVATED VACUUM BREAKER ASSY.
8	-----	VALVE BODY (NOT SOLD SEPARATELY)	22	777-033KJKABCP	ANGLE SHANK ASSEMBLY
9	333-075JKABNF	DASHPOT	23	777-013JKNF	SCREW, SET 6-32 X 1/8
10	1-043JKABNF	GASKET, CAP 1 X .80 X .09	24	-----	FORK (NOT SOLD SEPARATELY)
11	625-XJKABNF	FOR PARTS SEE 625-XJKABNF	25	739-051JKABNF	GASKET, 1/2 X 1/4 X 1/8
12	834-013JKCP	PEDAL BRACKET	26	739-048KJKABNF	4' WHITE VINYL HOSE ASSEMBLY
13	625-006JKNF	SCREW, PAN HEAD 5/16-18 UNC	27	E21JKABCP	ROSE SPRAY ASSEMBLY
14	834-012JKNF	PEDAL STOP			