

**CHICAGO FAUCETS**

a Geberit company

**FOR TECHNICAL ASSISTANCE**  
1-800-TEC-TRUE (1-800-832-8783)

2100 South Clearwater Drive  
Des Plaines, IL 60018  
Phone: 847-803-5000  
Fax: 847-803-5454  
www.chicagofaucets.com

**REPAIR PARTS**

BY: SID DATE: 11-22-11

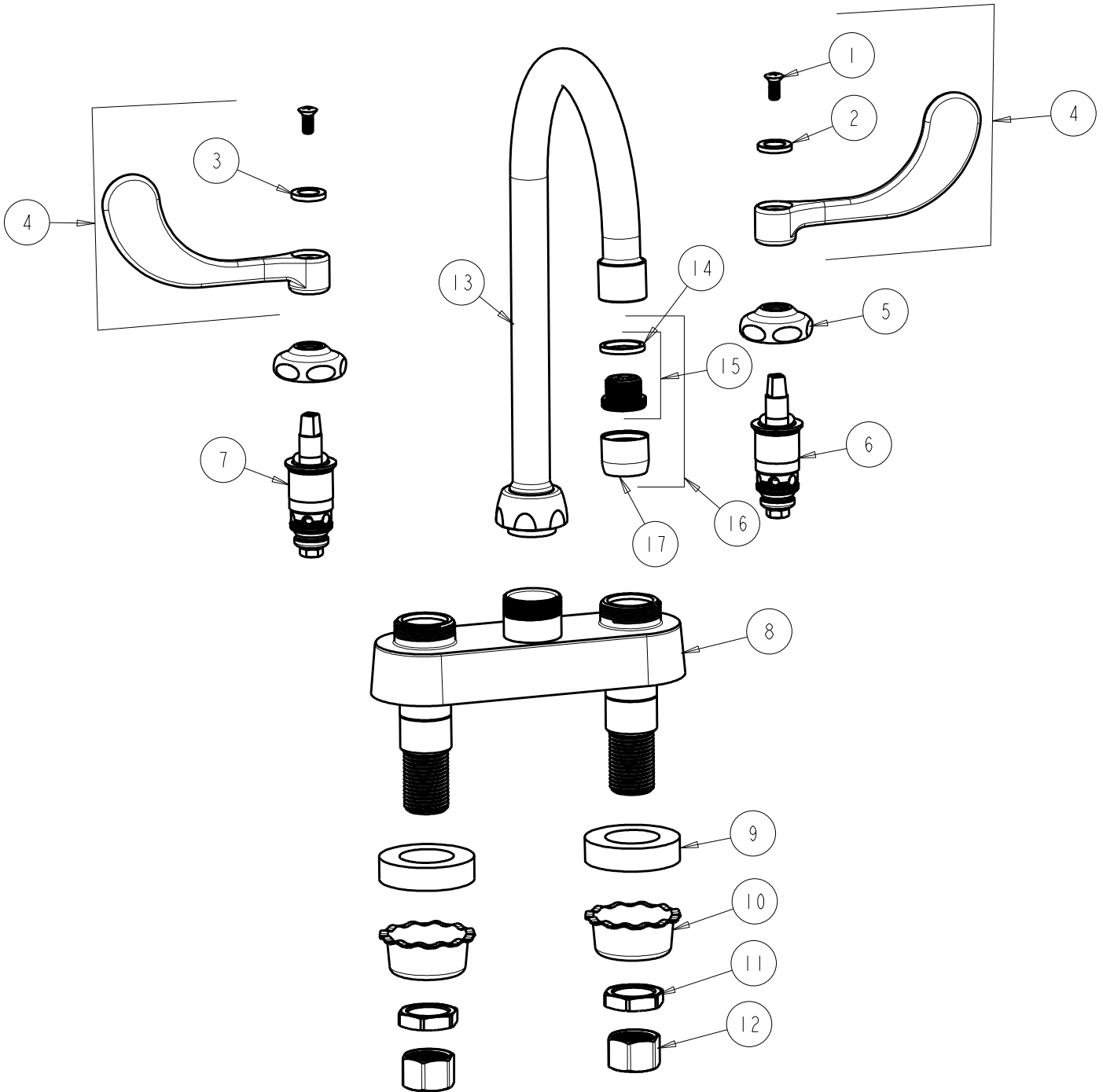
CHK: *[Signature]* REV:

FITTING NO.

895-317GN2BE3-2CP

SUBMITTED MODEL NO.

ITEM NO.



ITEM	PART NO.	DESCRIPTION	ITEM	PART NO.	DESCRIPTION
1	420-010JKRCF	SCREW, 10-32 UNC PH 1/2	10	1797-114JKNF	BASIN COCK WASHER
2	633-123JKNF	INDEX BUTTON (BLUE)	11	49-004JKRBF	LOCKNUT
3	633-023JKNF	INDEX BUTTON (RED)	12	49-005JKRBF	COUPLING NUT
4	317-PRJKCP	HANDLE, 4" WRISTBLADE (PAIR)	13	GN2BJKCP	SPOUT
5	1-214JKCP	CAP	14	229-003JKNF	WASHER
6	1-099XTJKNF	QUATURN CARTRIDGE (RH)	15	K2JKRCF	ADAPTER w/WASHER
7	1-100XTJKNF	QUATURN CARTRIDGE (LH)	16	E3-2JKCP	SOFTFLO AERATOR WITH ADAPTER
8	—	VALVE BODY (NOT SOLD SEPARATELY)	17	E3JKCP	SOFTFLO AERATOR OUTLET
9	555-313JKNF	WASHER			