

**CHICAGO FAUCETS**  
a Geberit company

2100 South Clearwater Drive  
Des Plaines, IL 60018  
Phone: 847-803-5000  
Fax: 847-803-5454  
www.chicagofaucets.com

**REPAIR PARTS**

FITTING NO.

**807-E2805-665PSHCP**

SUBMITTED MODEL NO.

BY: SID

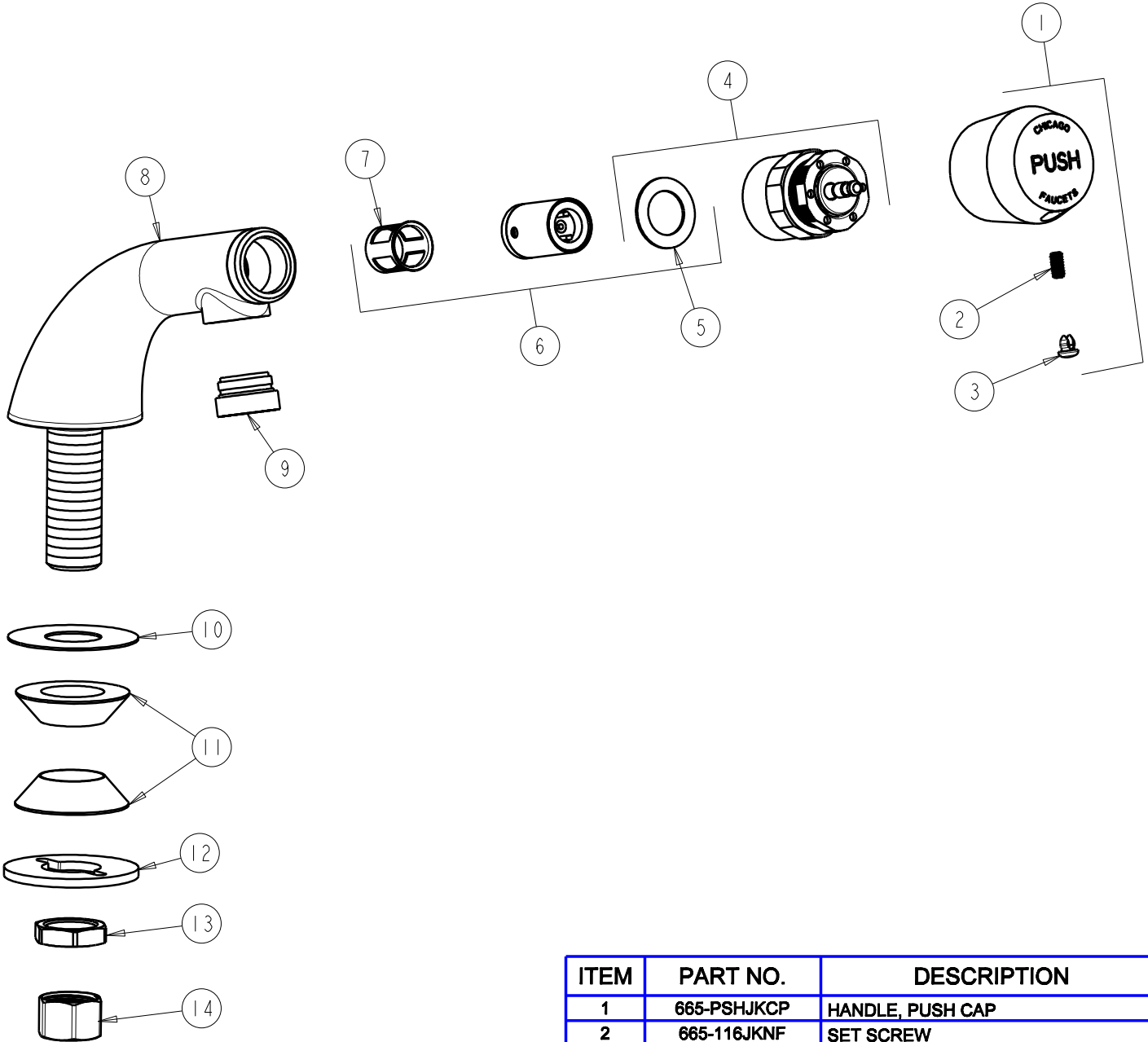
DATE: 04-13-09

CHK: *[Signature]*

REV: 03-19-10

ITEM NO.

**FOR TECHNICAL ASSISTANCE**  
**1-800-TEC-TRUE (1-800-832-8783)**



ITEM	PART NO.	DESCRIPTION
1	665-PSHJKCP	HANDLE, PUSH CAP
2	665-116JKNF	SET SCREW
3	665-309KJKNF	BUTTONS, HOT AND COLD
4	665-190KJKNF	ACTUATOR ASSEMBLY
5	665-011JKNF	WASHER, SEALING
6	671-XJKNF	METERING VALVE CARTRIDGE
7	667-402JKNF	MVP FILTER
8	—	VALVE BODY (NOT SOLD SEPARATELY)
9	E2805JKCP	VP ECONOFLO SPRAY OUTLET w/KEY
10	52-011JKNF	WASHER VP 27/32" 180 GRIT
11	93-032JKNF	RUBBER WASHER (QTY 1)
12	807-112JKNF	WASHER
13	49-004JKRBF	LOCKNUT
14	49-005JKRBF	COUPLING NUT