

CHICAGO FAUCETS

a Geberit company

2100 South Clearwater Drive
Des Plaines, IL 60018
Phone: 847-803-5000
Fax: 847-803-5454
www.chicagofaucets.com

REPAIR PARTS

BY: JAR DATE: 03-19-10

CHK: *[Signature]* REV:

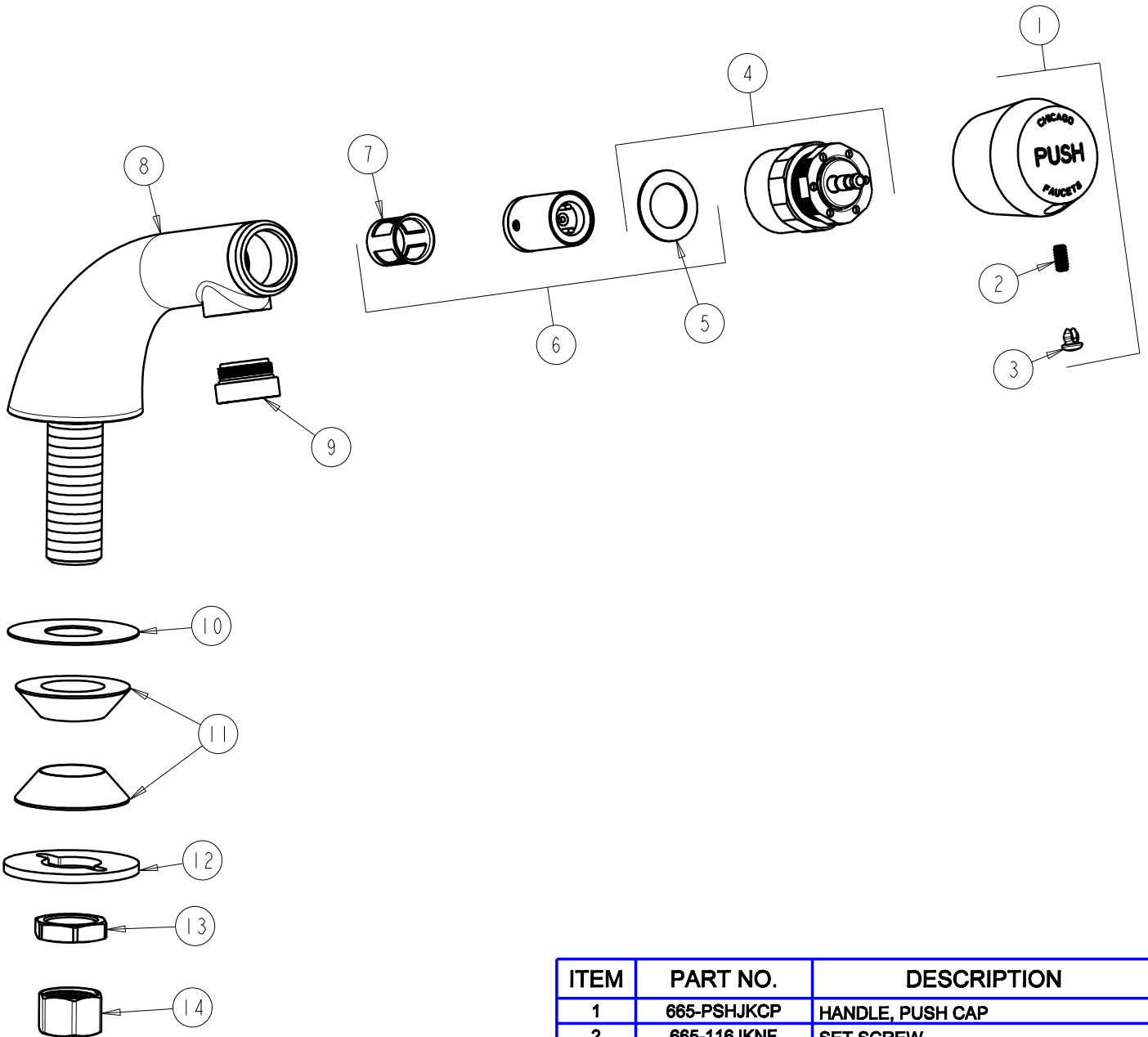
FITTING NO.

807-E12-665PSHVPACP

SUBMITTED MODEL NO.

ITEM NO.

FOR TECHNICAL ASSISTANCE
1-800-TEC-TRUE (1-800-832-8783)



ITEM	PART NO.	DESCRIPTION
1	665-PSHJKCP	HANDLE, PUSH CAP
2	665-116JKNF	SET SCREW
3	665-309JKNF	BUTTONS, HOT AND COLD
4	665-190JKNF	ACTUATOR ASSEMBLY
5	665-011JKNF	WASHER, SEALING
6	671-XJKNF	METERING VALVE CARTRIDGE
7	667-402JKNF	MVP FILTER
8	-----	VALVE BODY (NOT SOLD SEPARATELY)
9	E12VPJKCP	V.R. SOFTFLO AERATOR W/ KEY
10	52-011JKNF	WASHER VP 27/32" 180 GRIT
11	93-032JKNF	RUBBER WASHER (QTY 1)
12	807-112JKNF	WASHER
13	49-004JKRBF	LOCKNUT
14	49-005JKRBF	COUPLING NUT