

**CHICAGO FAUCETS** 

a Geberit company

2100 South Clearwater Drive  
Des Plaines, IL 60018  
Phone: 847-803-5000  
Fax: 847-803-5454  
www.chicagofaucets.com

**FOR TECHNICAL ASSISTANCE**  
1-800-TEC-TRUE (1-800-832-8783)

# REPAIR PARTS

BY: SID DATE: 08-12-09

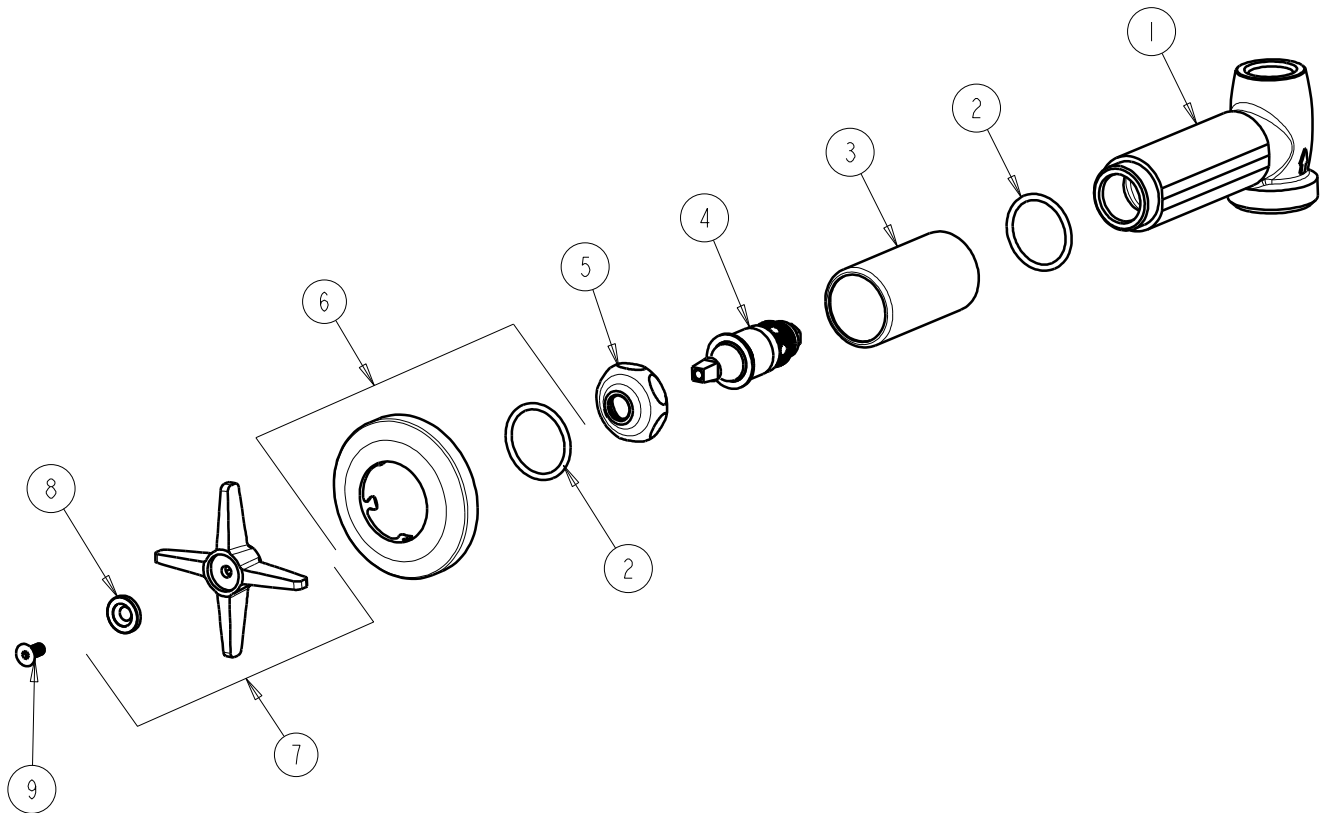
CHK:  REV:

FITTING NO.

**770-COLDVPHCP**

SUBMITTED MODEL NO.

ITEM NO.



ITEM	PART NO.	DESCRIPTION
1	—	VALVE BODY (NOT SOLD SEPARATELY)
2	5235-107JKNF	O-RING
3	5235-106JKCP	SLEEVE
4	217-XTLHJKNF	CARTRIDGE, SLO-COMPRESSION
5	1-214JKCP	CAP
6	633-201JKCP	FLANGE & O-RING
7	633-COLDJKCP	4-ARM CROSS HANDLE ASSEMBLY
8	633-123JKNF	INDEX BUTTON (BLUE)
9	420-020JKNF	SCREW, 1/8 FLAT HEX HEAD X 1/2