

CHICAGO FAUCETS

a Geberit company

2100 South Clearwater Drive
Des Plaines, IL 60018
Phone: 847-803-5000
Fax: 847-803-5454
www.chicagofaucets.com

FOR TECHNICAL ASSISTANCE
1-800-TEC-TRUE (1-800-832-8783)

REPAIR PARTS

BY: SID DATE: 08-12-09

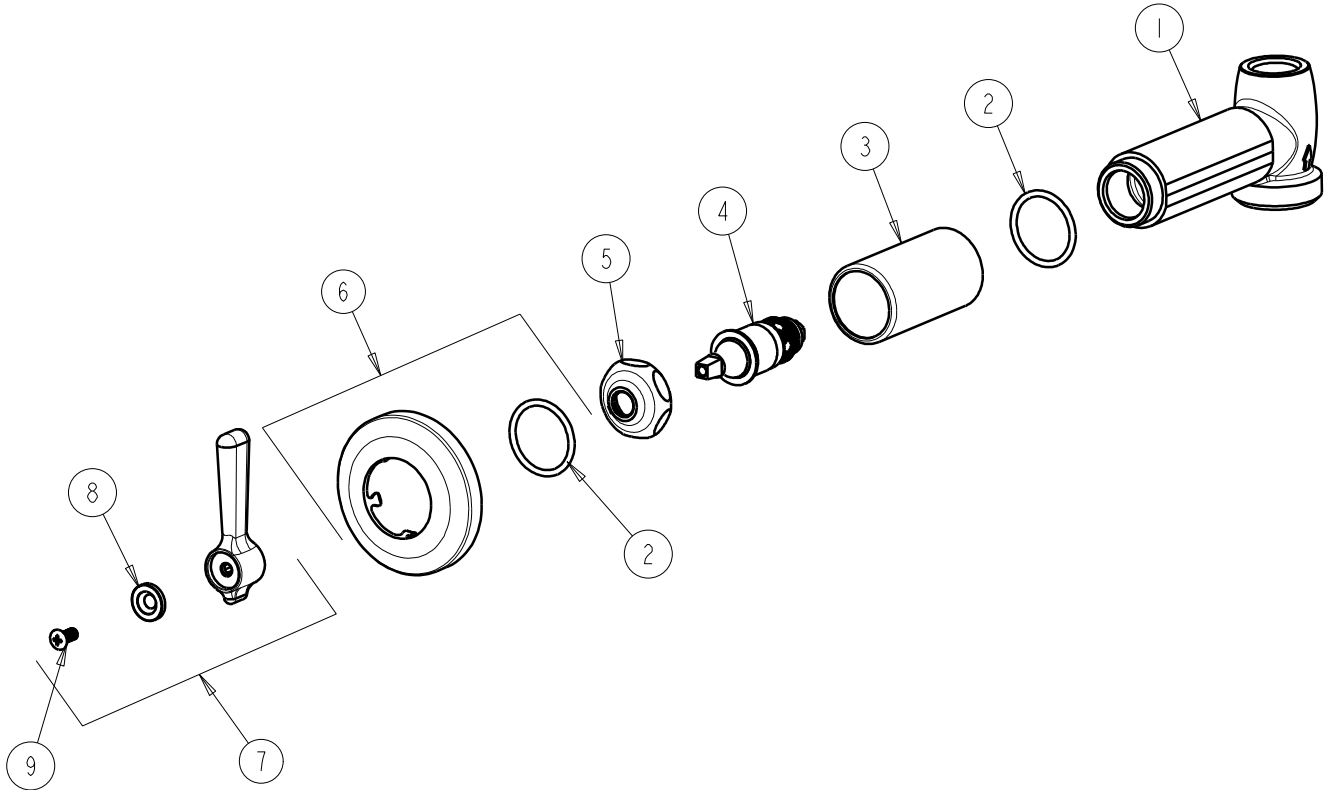
CHK: *[Signature]* REV:

FITTING NO.

770-369COLDCP

SUBMITTED MODEL NO.

ITEM NO.



ITEM	PART NO.	DESCRIPTION
1	—	VALVE BODY (NOT SOLD SEPARATELY)
2	5235-107JKNF	O-RING
3	5235-106JKCP	SLEEVE
4	217-XTLHJKNF	CARTRIDGE, SLO-COMPRESSION
5	1-214JKCP	CAP
6	633-201JKCP	FLANGE & O-RING
7	369-COLDJKCP	LEVER HANDLE ASSEMBLY
8	633-123JKNF	INDEX BUTTON (BLUE)
9	420-010JKRCF	SCREW, 10-32 UNC PH 1/2