

**CHICAGO FAUCETS**  
a Geberit company

2100 South Clearwater Drive  
Des Plaines, IL 60018  
Phone: 847-803-5000  
Fax: 847-803-5454  
www.chicagofaucets.com

**REPAIR PARTS**

FITTING NO.

**625-699CP**

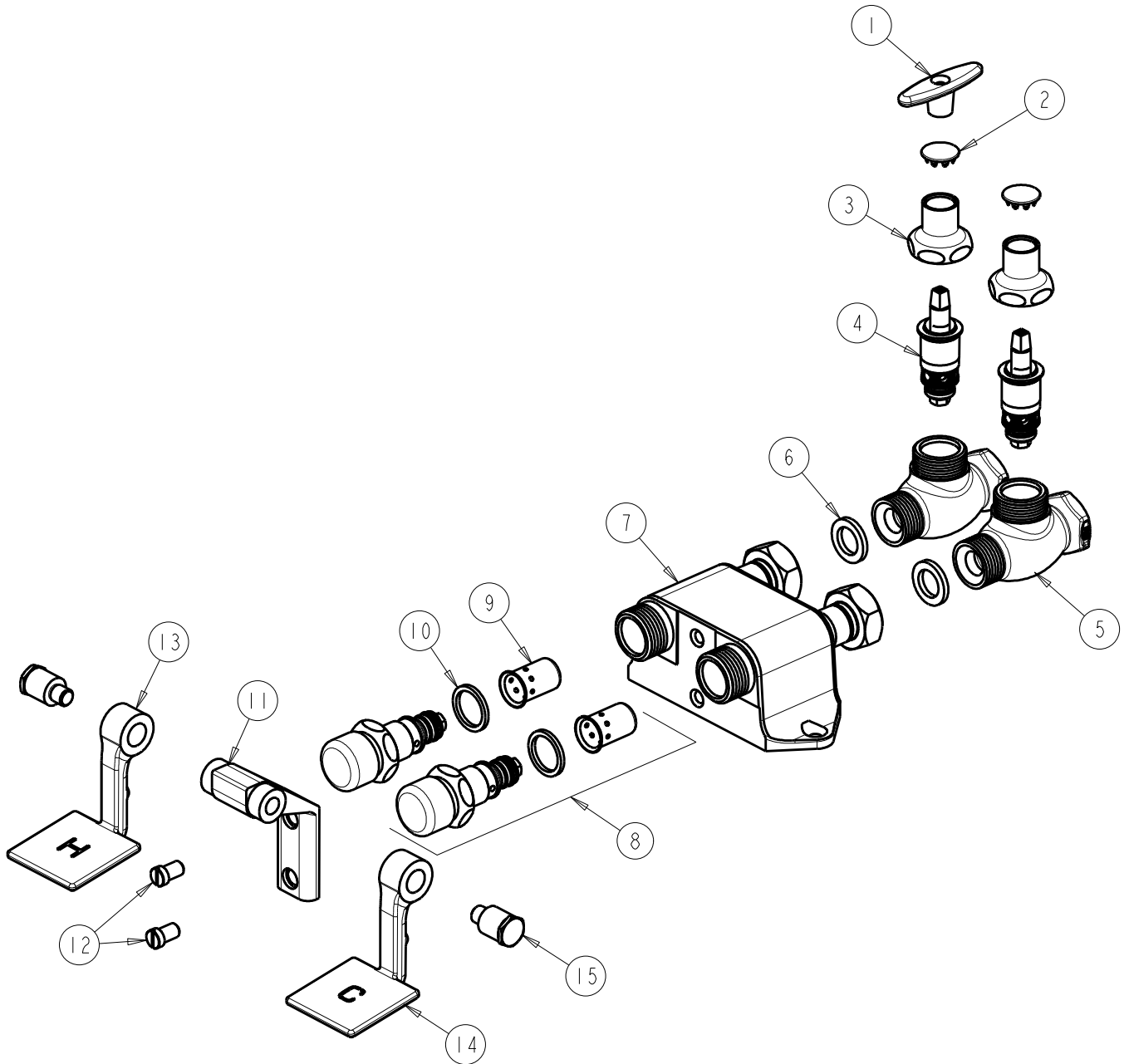
SUBMITTED MODEL NO.

ITEM NO.

BY: SID DATE: 02-26-09

CHK: *[Signature]* REV: 06-20-11

**FOR TECHNICAL ASSISTANCE**  
1-800-TEC-TRUE (1-800-832-8783)



ITEM	PART NO.	DESCRIPTION	ITEM	PART NO.	DESCRIPTION
1	293-006JKRCF	TEE HANDLE (INCLUDES SCREW)	9	333-075JKNF	DASPOT
2	1-144JKCP	BUTTON	10	1-043JKNF	GASKET, CAP 1 X .80 X .09
3	1-246JKCP	NUT, CAP LOOSE KEY 1-1/8-18 UNEF	11	625-060JKCP	BRACKET
4	217-XTLHJKNF	CARTRIDGE, SLO-COMPRESSION (LH)	12	625-006JKNF	SCREW, PAN HEAD 5/16-18 UNC
5	---	BODY (NOT SOLD SEPARATELY)	13	625-058JKNF	PEDAL, HOT
6	1-011JKNF	WASHER, .97 X .62 X .12	14	625-158JKNF	PEDAL, COLD
7	---	VALVE BODY (NOT SOLD SEPARATELY)	15	625-061JKRCF	BOLT, SHOULDER 3/8-24 UNF X 5/8 HEX
8	628-XJKNF	FOR PARTS SEE 628X			