

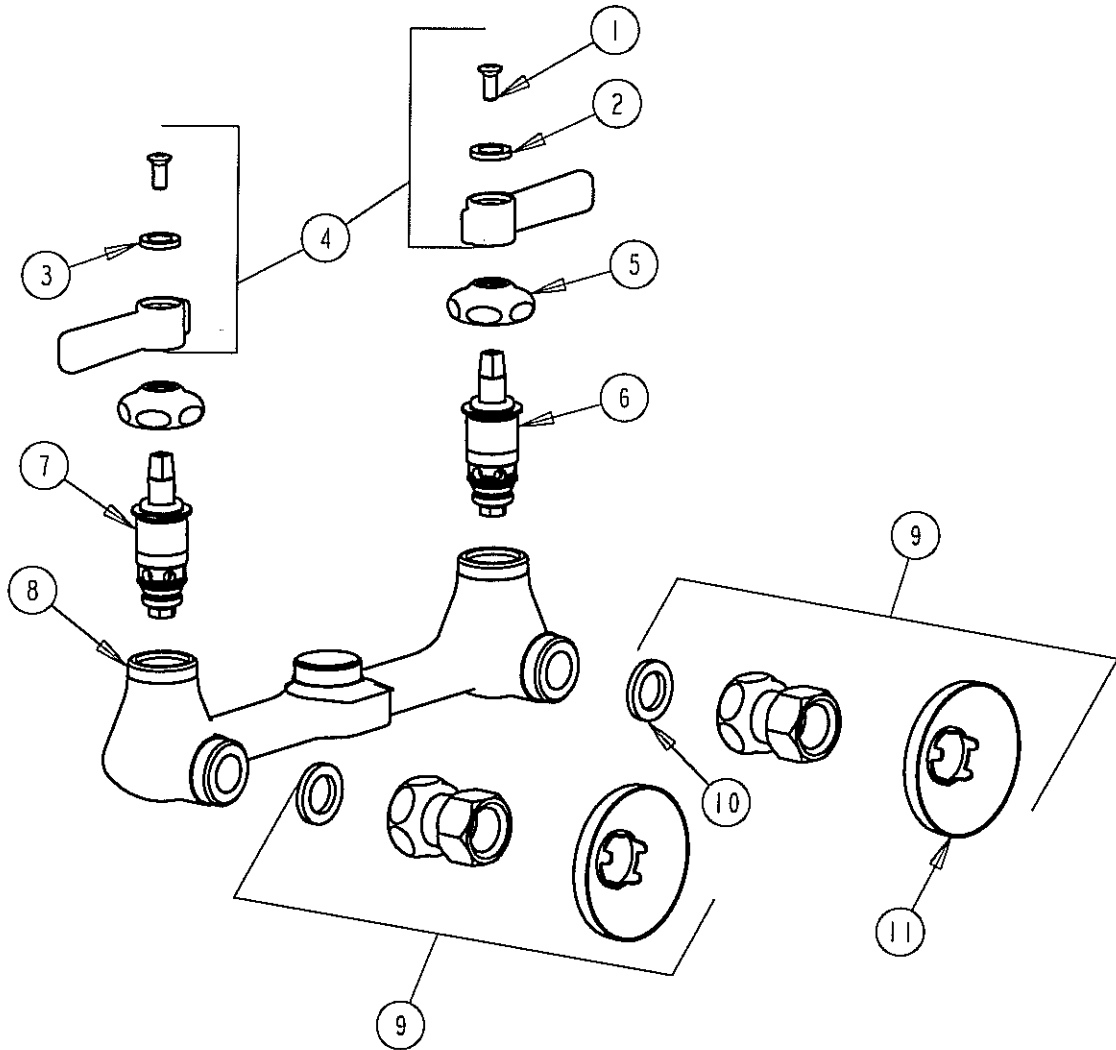
# PARTS LIST

BY: SID  
CHK'D: *[Signature]*



FINISH: AS SPECIFIED  
DATE: 10-03-02

540-LDLESSSPTWXF



ITEM NO.	PART NO.	DESCRIPTION	ITEM NO.	PART NO.	DESCRIPTION
1	420-010	SCREW	8	-----	VALVE BODY (NOT SOLD SEPARATELY)
2	633-023	INDEX BUTTON (RED)	9	WXF	ARM ASSEMBLY W/WASHER & FLANGE
3	633-123	INDEX BUTTON (BLUE)	10	1-011	WASHER
4	369PR	LEVER HANDLE ASSEMBLY	11	749-016	WALL FLANGE
5	1-214	CAP			
6	1-100XT	QUATURN UNIT (LH)			
7	1-099XT	QUATURN UNIT (RH)			