



a Geberit company

2100 South Clearwater Drive  
Des Plaines, IL 60018  
Phone: 847-803-5000  
Fax: 847-803-5454  
www.chicagofaucets.com

# REPAIR PARTS

FITTING NO.

540-LDL9HFAB

SUBMITTED MODEL NO.

BY: SID

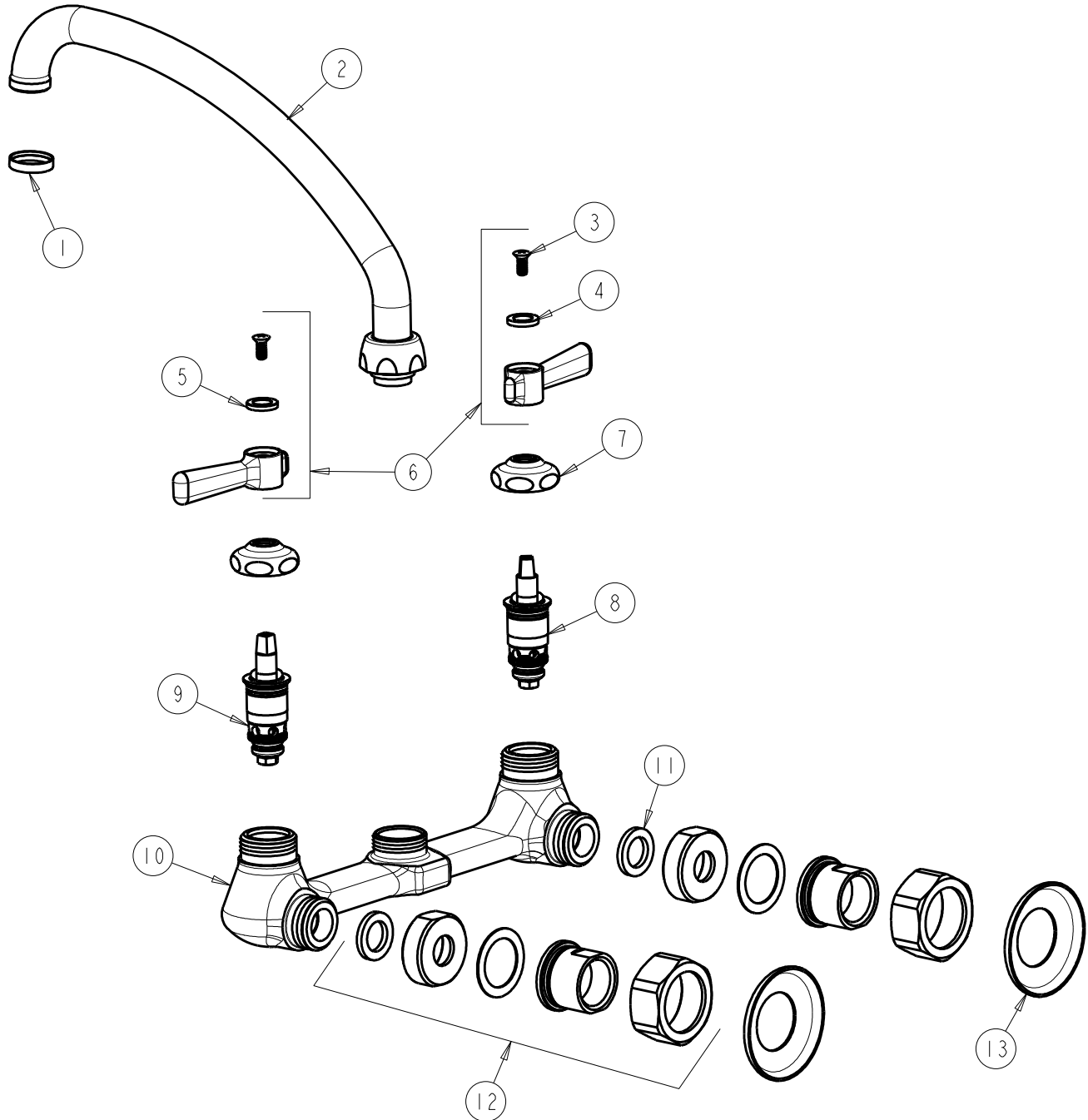
DATE: 04-22-13

CHK: *[Signature]*

REV: 01-02-14

ITEM NO.

**FOR TECHNICAL ASSISTANCE**  
1-800-TEC-TRUE (1-800-832-8783)



ITEM	PART NO.	DESCRIPTION	ITEM	PART NO.	DESCRIPTION
1	1-159JKCP	SPOUT END RING	8	1-100XTJKABNF	QUATURN CARTRIDGE (LH)
2	L9LEQKAB	SPOUT, 9-1/2 C-C	9	1-099XTJKABNF	QUATURN CARTRIDGE (RH)
3	420-010JKRCF	SCREW, 10-32 UNC PH 1/2	10	-----	VALVE BODY (NOT SOLD SEPARATELY)
4	633-023JKNF	INDEX BUTTON (RED)	11	1-011JKABNF	WASHER, .97 X .62 X .12
5	633-123JKNF	INDEX BUTTON (BLUE)	12	540-155KJKABCP	3/4 SUPPLY ARM
6	369-PRJKCP	HANDLE, 2-3/8" LEVER (PAIR)	13	1-055JKCP	FLANGE
7	1-214JKCP	CAP			