

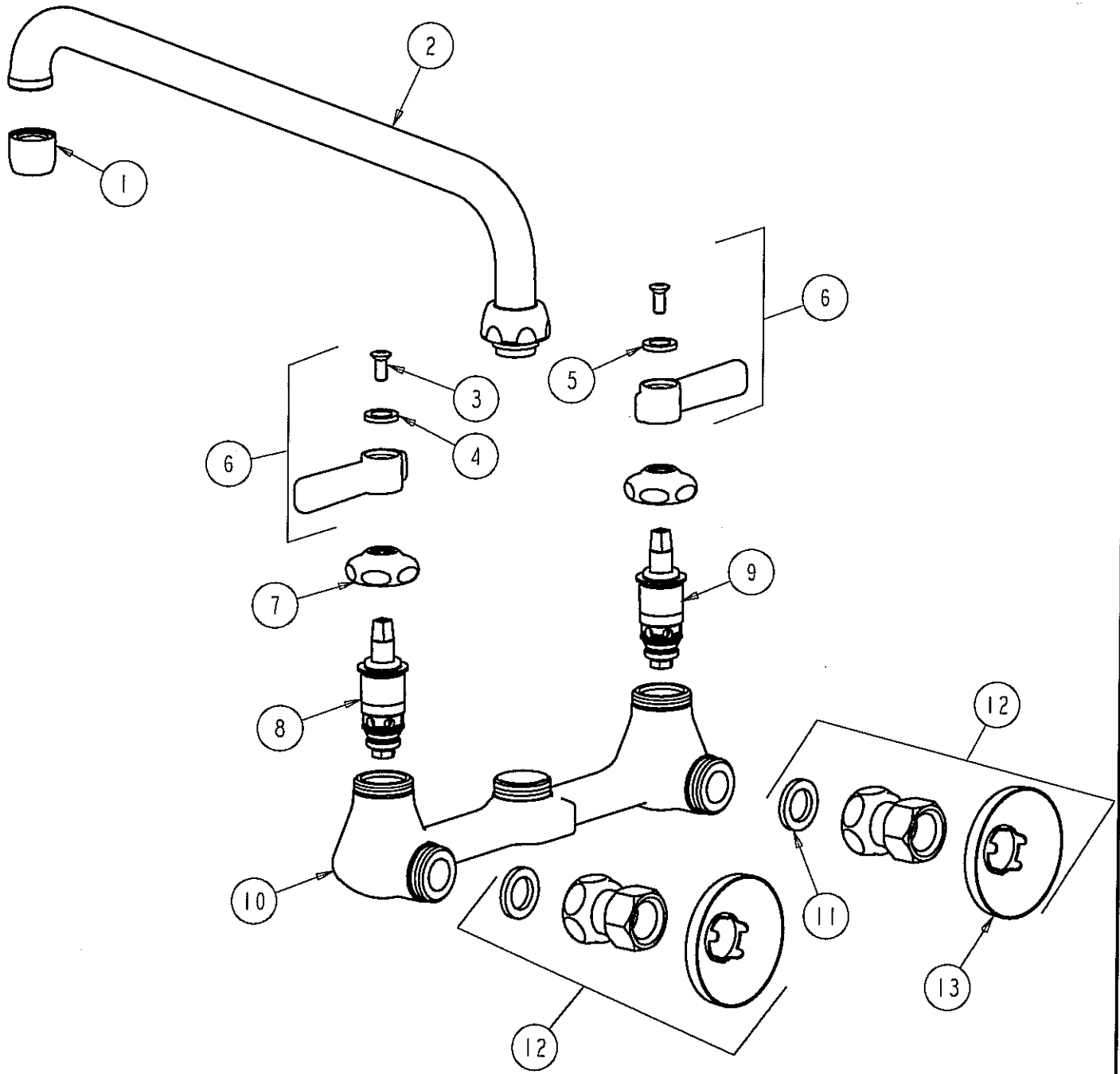
PARTS LIST

BY: SID
CHK'D: *SID*



FINISH: AS SPECIFIED
DATE: 10-03-02

540-LDLI2WXF



ITEM NO.	PART NO.	DESCRIPTION	ITEM NO.	PART NO.	DESCRIPTION
1	E3	SOFTFLO OUTLET	8	1-099XT	QUATURN UNIT (RH)
2	L12	FOR PARTS SEE L12 WITH E3	9	1-100XT	QUATURN UNIT (LH)
3	420-010	SCREW	10	-----	VALVE BODY (NOT SOLD SEPARATELY)
4	633-123	INDEX BUTTON (BLUE)	11	1-011	WASHER
5	633-023	INDEX BUTTON (RED)	12	WXF	ARM ASSEMBLY W/WASHER & FLANGE
6	369PR	LEVER HANDLE ASSEMBLY	13	749-016	WALL FLANGE
7	1-214	CAP			