

CHICAGO FAUCETS
a Geberit company

2100 South Clearwater Drive
Des Plaines, IL 60018
Phone: 847-803-5000
Fax: 847-803-5454
www.chicagofaucets.com

REPAIR PARTS

FITTING NO.

515-686-126KL12E31CP

SUBMITTED MODEL NO.

BY: JAR

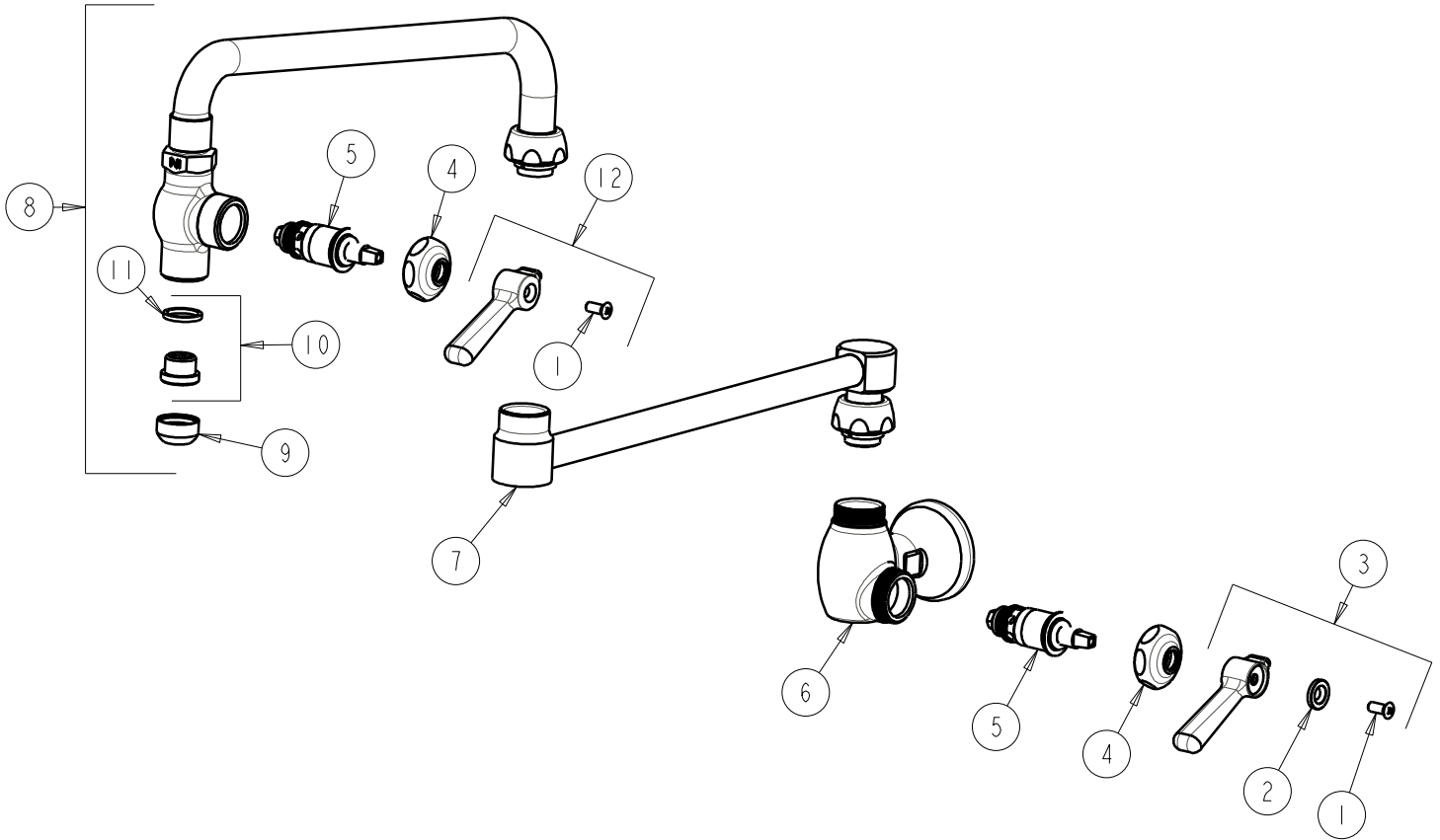
DATE: 01-16-08

ITEM NO.

CHK: *[Signature]*

REV:

FOR TECHNICAL ASSISTANCE
1-800-TEC-TRUE (1-800-832-8783)



ITEM	PART NO.	DESCRIPTION
1	420-010JKRCF	SCREW, 10-32 UNC PH 1/2
2	633-123JKNF	INDEX BUTTON (BLUE)
3	369-COLDJKCP	LEVER HANDLE ASSEMBLY
4	1-214JKCP	CAP
5	1-099XTJKNF	QUATURN UNIT (RH)
6	---	VALVE BODY (NOT SOLD SEPARATELY)
7	686-126KJKCP	DOUBLE JOINTED SWING SPOUT
8	L12E31JKCP	SPOUT ASSEMBLY
9	E1JKRCF	OUTLET
10	K2JKRCF	ADAPTER
11	229-003JKNF	WASHER
12	269-JKNF	HEAT RESISTANT LEVER HANDLE