

CHICAGO FAUCETS
a Geberit company

2100 South Clearwater Drive
Des Plaines, IL 60018
Phone: 847-803-5000
Fax: 847-803-5454
www.chicagofaucets.com

REPAIR PARTS

FITTING NO.

509-GCLCP

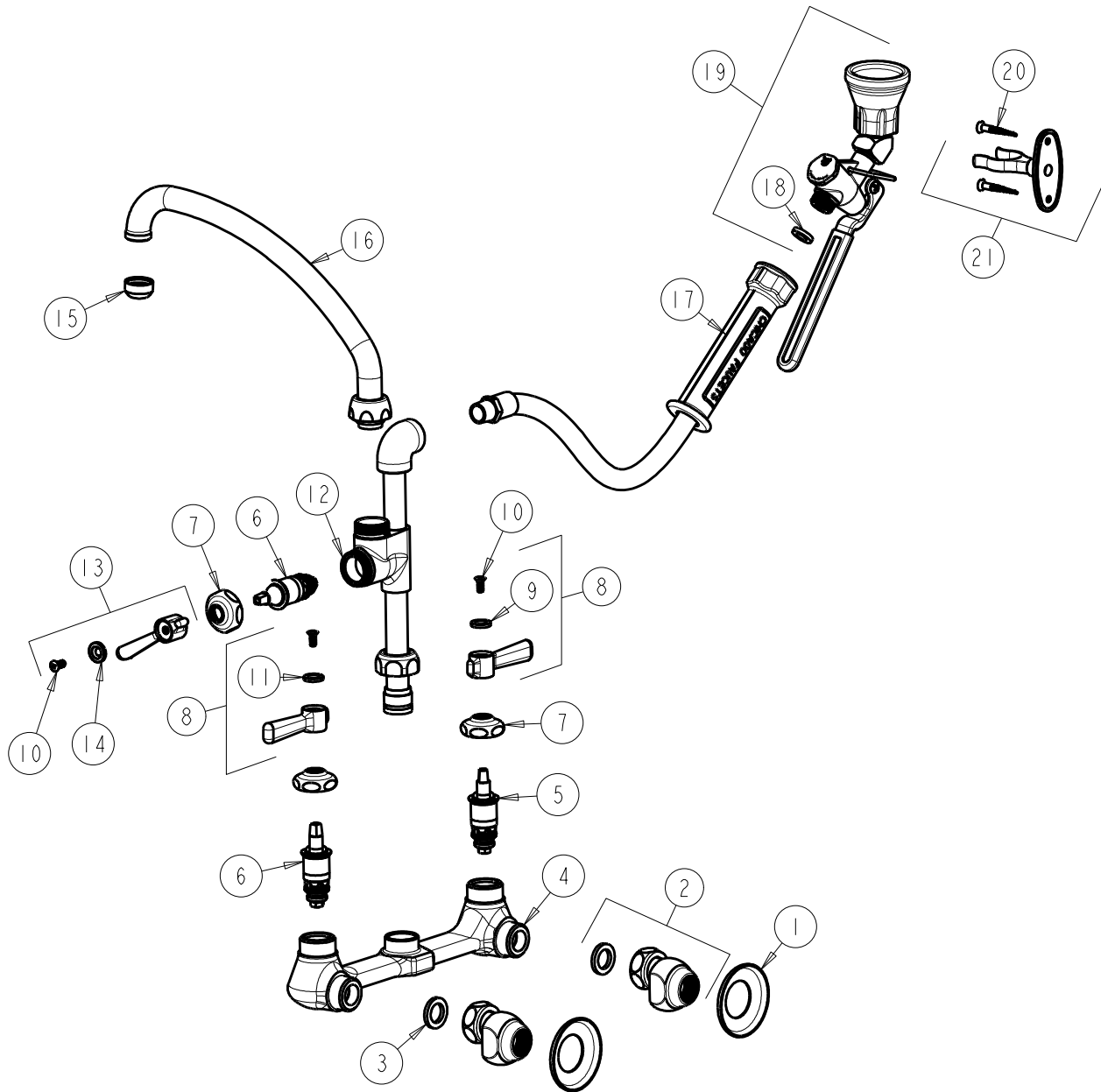
SUBMITTED MODEL NO.

ITEM NO.

FOR TECHNICAL ASSISTANCE
1-800-TEC-TRUE (1-800-832-8783)

BY: JAR DATE: 08-15-05

CHK: *[Signature]* REV: 05-13-11



ITEM	PART NO.	DESCRIPTION	ITEM	PART NO.	DESCRIPTION
1	1-055JKCP	FLANGE	12	—	VALVE BODY (NOT SOLD SEPARATELY)
2	GCJKCP	OFFSET ARM (WITH CHECK VALVE)	13	369-PLJKCP	PLAIN LEVER HANDLE
3	1-011JKNF	WASHER, .97 X .62 X .12	14	633-223JKNF	INDEX BUTTON (WHITE)
4	—	VALVE BODY (NOT SOLD SEPARATELY)	15	E1JKRCF	QUIXTOP OUTLET
5	1-100XTJKNF	QUATURN UNIT (LH)	16	L9LESSE3JKCP	FOR PARTS SEE L9LESSE3JKCP
6	1-099XTJKNF	QUATURN UNIT (RH)	17	83-44NF	HOSE & HANDLE
7	1-214JKCP	CAP	18	919-243JKNF	GASKET, .685 X .375 X .125
8	369-PRJKCP	LEVER HANDLE ASSEMBLY (PAIR)	19	90-ANGABCP	PRE-RINSE ANGLE VALVE LOW FLOW
9	633-023JKNF	INDEX BUTTON (RED)	20	173-006JKCP	FLAT HEAD WOOD SCREW (1)
10	420-010JKRCF	SCREW, 10-32 UNC PH 1/2	21	853-CP	WALL HOOK ASSEMBLY
11	633-123JKNF	INDEX BUTTON (BLUE)			