

CHICAGO FAUCETS
a Geberit company

2100 South Clearwater Drive
Des Plaines, IL 60018
Phone: 847-803-5000
Fax: 847-803-5454
www.chicagofaucets.com

REPAIR PARTS

FITTING NO.

50-VPACP

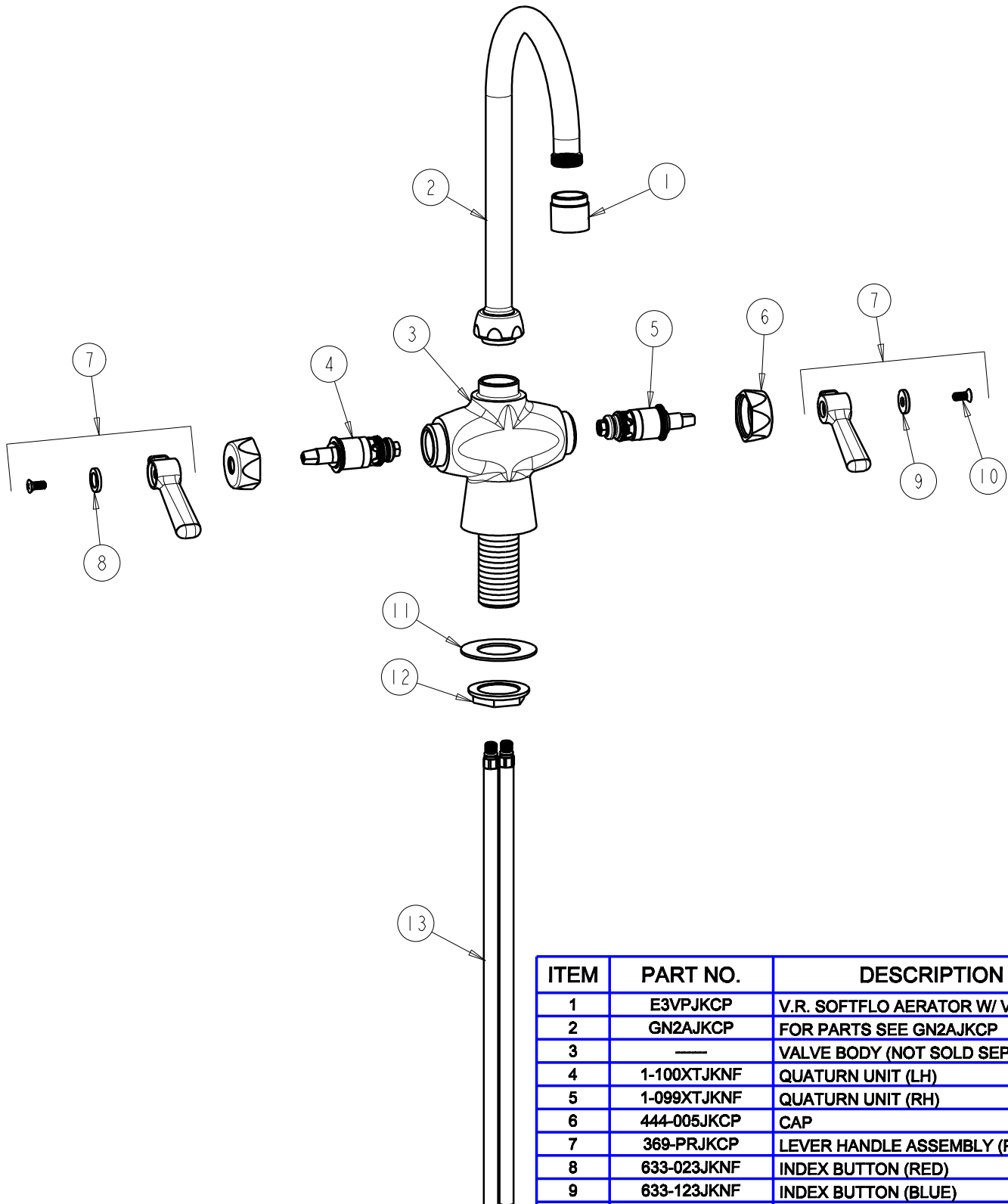
SUBMITTED MODEL NO.

ITEM NO.

BY: SID DATE: 11-09-09

CHK: *[Signature]* REV:

FOR TECHNICAL ASSISTANCE
1-800-TEC-TRUE (1-800-832-8783)



ITEM	PART NO.	DESCRIPTION
1	E3VPJKCP	V.R. SOFTFLO AERATOR W/ V.R. KEY
2	GN2AJKCP	FOR PARTS SEE GN2AJKCP
3	—	VALVE BODY (NOT SOLD SEPARATELY)
4	1-100XTJKNF	QUATURN UNIT (LH)
5	1-099XTJKNF	QUATURN UNIT (RH)
6	444-005JKCP	CAP
7	369-PRJKCP	LEVER HANDLE ASSEMBLY (PAIR)
8	633-023JKNF	INDEX BUTTON (RED)
9	633-123JKNF	INDEX BUTTON (BLUE)
10	420-010JKRCF	SCREW, 10-32 UNC PH 1/2
11	50-014JKNF	STEEL WASHER
12	50-003JKRBF	LOCKNUT
13	50-101KJKNF	SUPPLY TUBE ASSEMBLY