

**CHICAGO FAUCETS** 

a Geberit company

2100 South Clearwater Drive  
Des Plaines, IL 60018  
Phone: 847-803-5000  
Fax: 847-803-5454  
www.chicagofaucets.com

**REPAIR PARTS**

BY: JAR DATE: 09-29-09  
CHK: *JAR* REV:

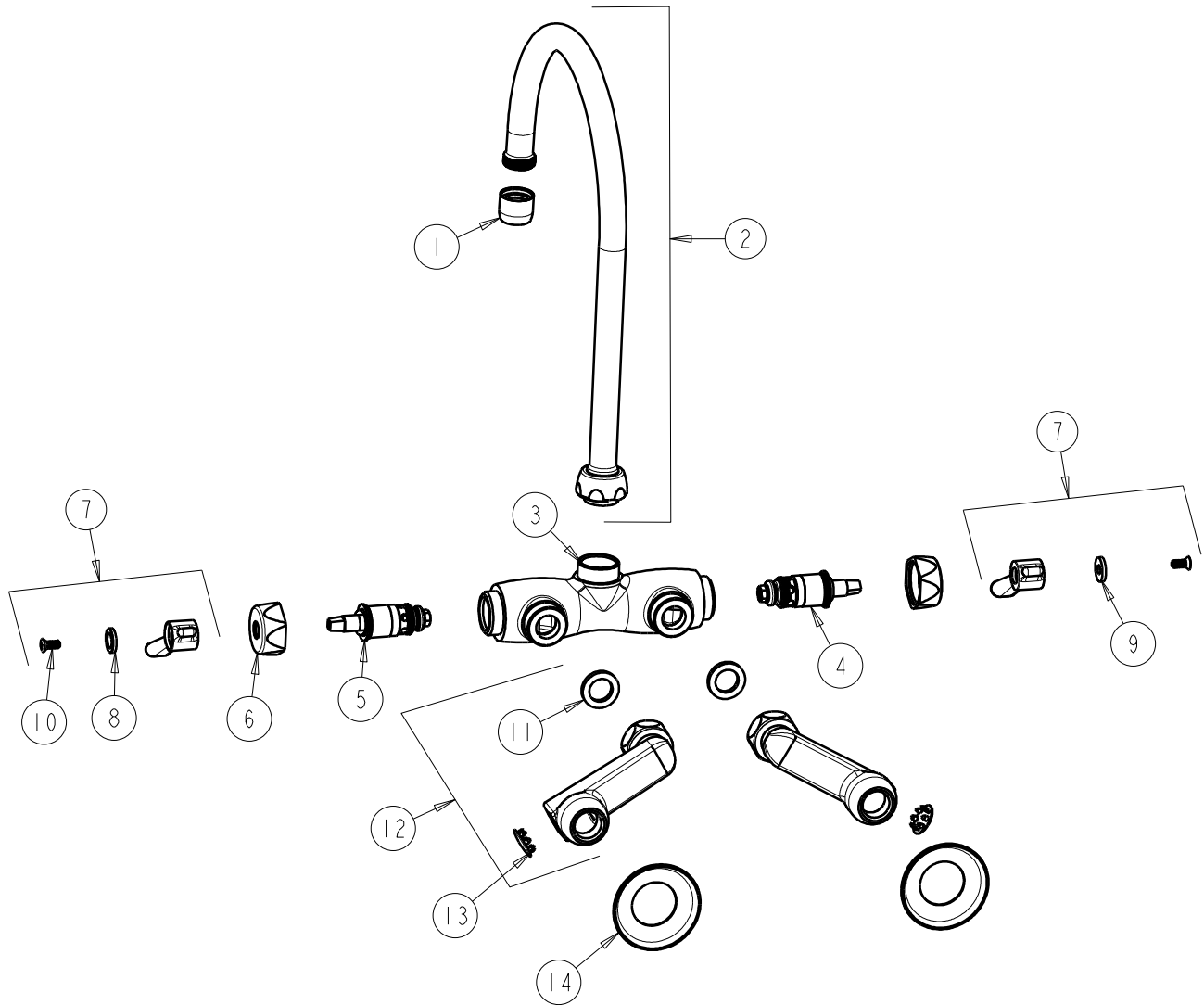
FITTING NO.

**445-GN8AE3RCP**

SUBMITTED MODEL NO.

ITEM NO.

**FOR TECHNICAL ASSISTANCE**  
1-800-TEC-TRUE (1-800-832-8783)



ITEM	PART NO.	DESCRIPTION
1	E3JKCP	SOFTFLO AERATOR
2	GN8AE3JKCP	FOR PARTS SEE GN8AE3JKCP
3	—	VALVE BODY (NOT SOLD SEPARATELY)
4	1-100XTJKNF	QUATURN UNIT (LH)
5	1-099XTJKNF	QUATURN UNIT (RH)
6	444-005JKCP	CAP
7	369-PRJKCP	LEVER HANDLE ASSEMBLY (PAIR)
8	633-123JKNF	INDEX BUTTON (BLUE)
9	633-023JKNF	INDEX BUTTON (RED)
10	420-010JKRCF	SCREW, 10-32 UNC PH 1/2
11	1-011JKNF	WASHER, .97 X .62 X .12
12	RJKCP	SUPPLY ARM ASSEMBLY
13	1-144JKCP	BUTTON
14	1-055JKCP	FLANGE