

CHICAGO FAUCETS 

a Geberit company

2100 South Clearwater Drive
Des Plaines, IL 60018
Phone: 847-803-5000
Fax: 847-803-5454
www.chicagofaucets.com

REPAIR PARTS

BY: SID DATE: 10-10-11

CHK:  REV:

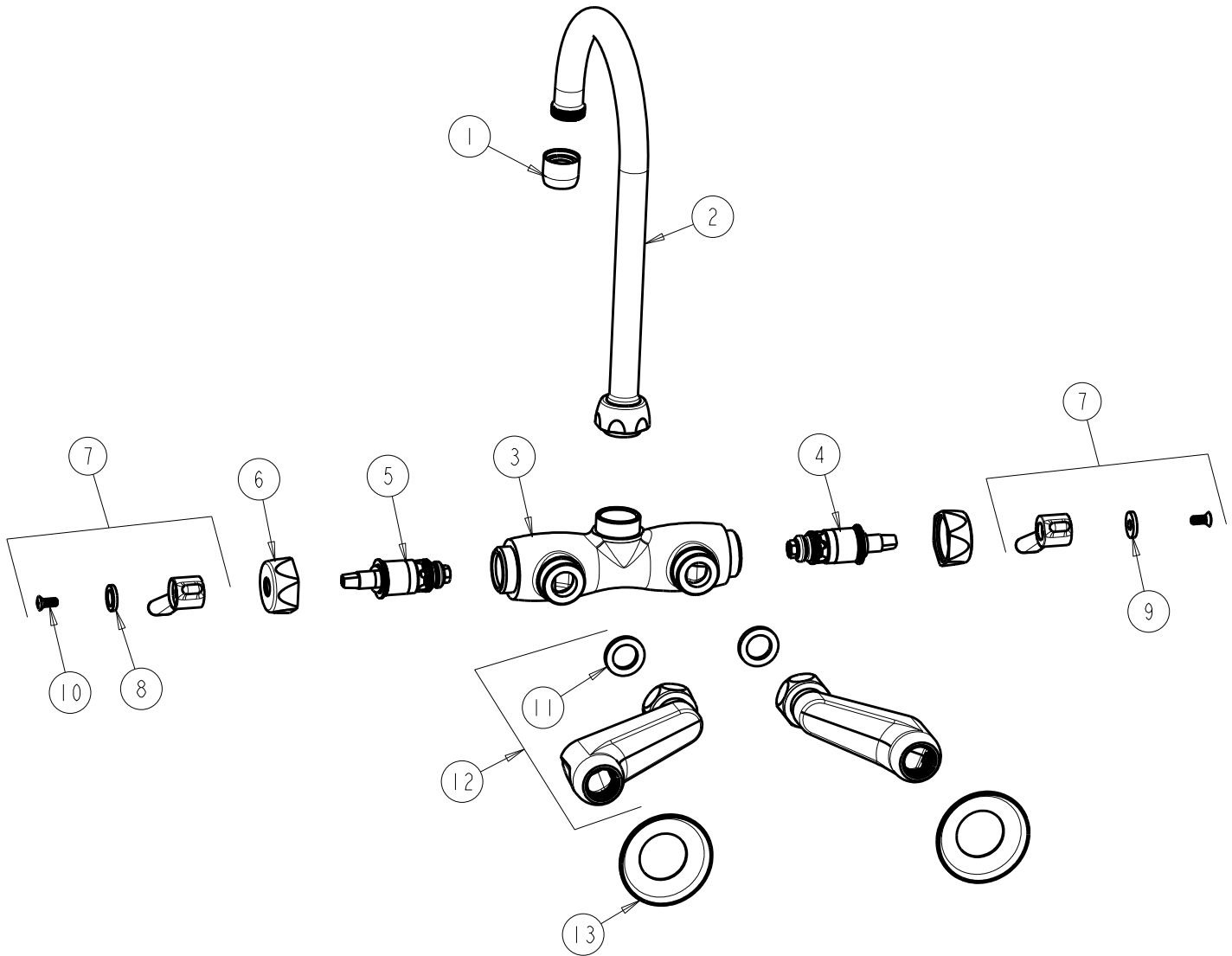
FITTING NO.

445-GN2AE3RCP

SUBMITTED MODEL NO.

ITEM NO.

FOR TECHNICAL ASSISTANCE
1-800-TEC-TRUE (1-800-832-8783)



ITEM	PART NO.	DESCRIPTION	ITEM	PART NO.	DESCRIPTION
1	E3JKCP	SOFTFLO AERATOR	8	633-123JKNF	INDEX BUTTON (BLUE)
2	GN2AJKCP	GN SPOUT-A TYPE END	9	633-023JKNF	INDEX BUTTON (RED)
3	---	VALVE BODY (NOT SOLD SEPARATELY)	10	420-010JKRCF	SCREW, 10-32 UNC PH 1/2
4	1-100XTJKNF	QUATURN UNIT (LH)	11	1-011JKNF	WASHER, .97 X .62 X .12
5	1-099XTJKNF	QUATURN UNIT (RH)	12	RJKABCP	SUPPLY ARM WITH BUILT-IN SHUT-OFF
6	444-005JKCP	CAP	13	1-055JKCP	FLANGE
7	369-PRJKCP	LEVER HANDLE ASSEMBLY (PAIR)			