

**REPAIR PARTS**

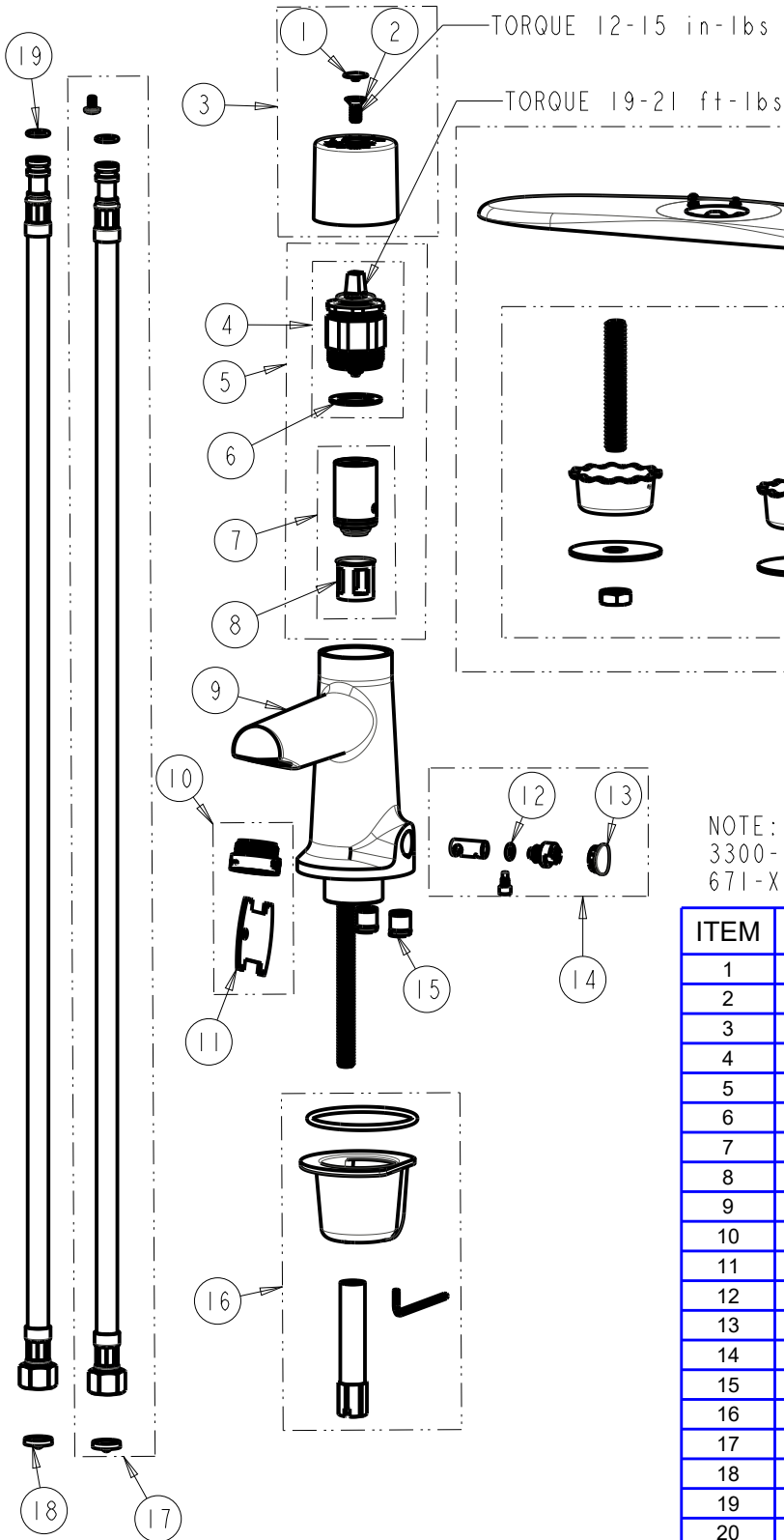
BY: JAR DATE: 01-20-12  
CHK: *Joe* REV: 01-13-22

FITTING NO.  
**SEE SCHEDULE**  
SUBMITTED MODEL NO.

ITEM NO.

**FOR TECHNICAL ASSISTANCE**  
1-800-TEC-TRUE (1-800-832-8783)

SCHEDULE	SCHEDULE
FITTING NO.	FITTING NO.
3501-E39VPABCP	3501-E2805ABCP
3501-4E39VPABCP	3501-4E2805ABCP
3501-8E39VPABCP	3501-8E2805ABCP



NOTE:  
3300-006JKNF REQUIRED WHEN ORDERING  
671-XJKABNF. SOLD SEPARATELY.

ITEM	PART NO.	DESCRIPTION
1	3500-005JKCP	BUTTON
2	420-020JKNF	SCREW, 1/8 FLAT HEX HEAD X 1/2
3	3500-004KJKCP	KIT, HANDLE
4	3300-003KJKABNF	ACTUATOR ASSEMBLY
5	3300-103KJKABNF	ACTUATOR & CARTRIDGE KIT
6	3300-006JKABNF	WASHER
7	671-XJKABNF	METERING VALVE CARTRIDGE
8	667-402JKABNF	MVP FILTER
9	-----	BODY, VALVE DUAL SUPPLY
10	E39VPJKABCP	OUTLET, 0.35 GPM SPRAY VP
11	3-024JKRCF	KEY, VP
12	243.390.AB.1	O-RING, #008
13	3500-009JKCP	BUTTON, INTERNAL MIXING
14	3500-013KJKABNF	KIT, INTERNAL MIXER
15	550-009KJKABNF	CHECK CARTRIDGE ASSEMBLY
16	171-PPJKNF	KIT, DECK MOUNTING HARDWARE
17	245.536.00.1	BRAIDED HOSE KIT
18	3300-205JKABNF	FILTER SCREEN, 50 MESH
19	243.392.AB.1	O-RING, #011
20	242.872.21.1	KIT, COVER PLATE MOUNTING
21	3500-002KJKCP	KIT, COVER PLATE 8 IN
22	3500-001KJKCP	KIT, COVER PLATE 4 IN