

# PARTS LIST

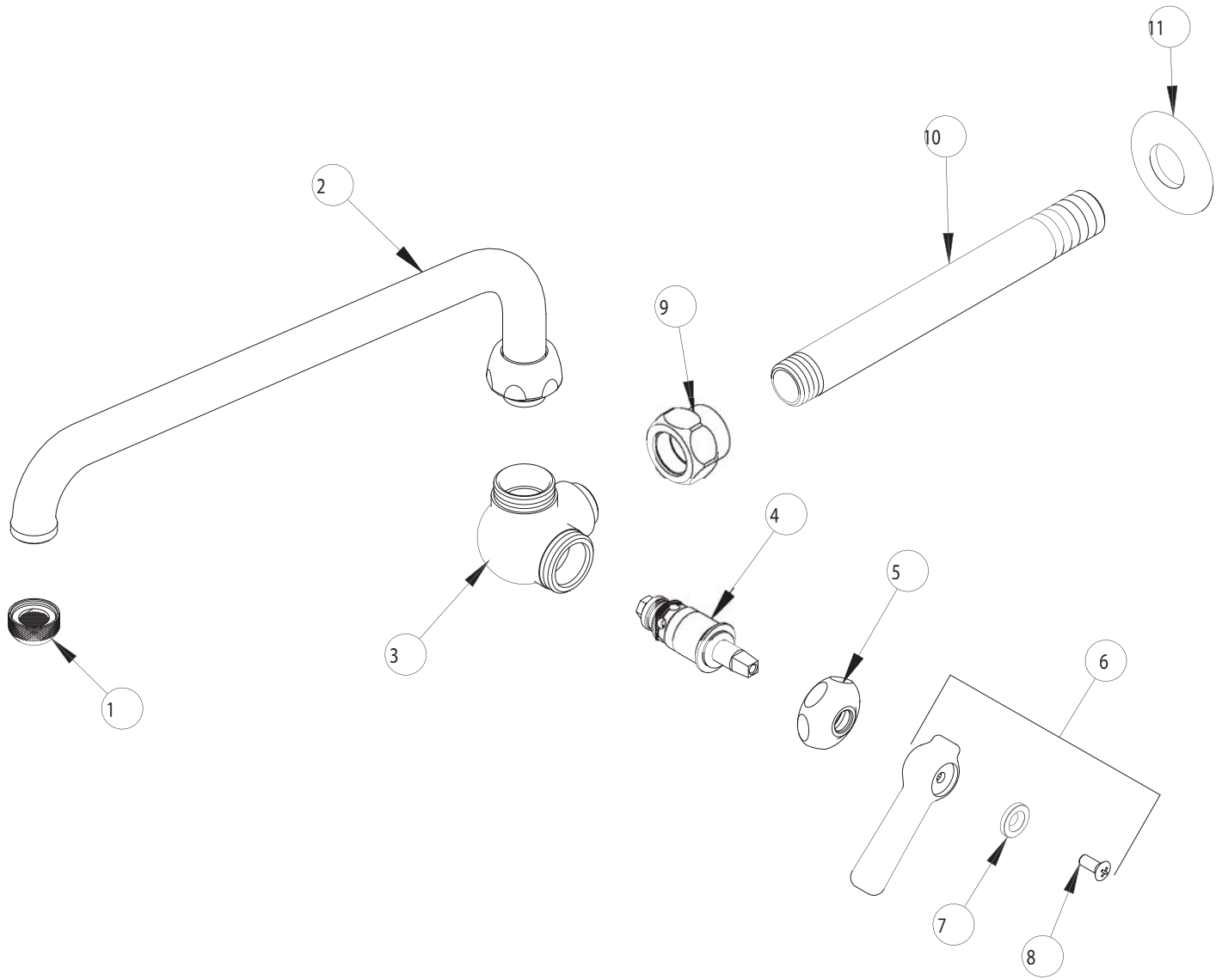
BY: SID  
CHK'D:



FINISH:  
DATE:

AS SPECIFIED  
06-01-01

334



ITEM NO.	PART NO.	DESCRIPTION	ITEM NO.	PART NO.	DESCRIPTION
1	E1	OUTLET	7	633-123	INDEX BUTTON (BLUE)
2	L12	FOR PARTS SEE L12 WITH E3	8	420-010	SCREW
3	-----	VALVE BODY (NOT SOLD SEPARATELY)	9	530-054	ADAPTER
4	1-099XT	QUATURN UNIT (RH)	10	334-001	SHANK INLET
5	1-214	CAP	11	722-006	FLANGE
6	369-COLD	COLD LEVER HANDLE ASSEMBLY			