

CHICAGO FAUCETS
a Geberit company

2100 South Clearwater Drive
Des Plaines, IL 60018
Phone: 847-803-5000
Fax: 847-803-5454
www.chicagofaucets.com

REPAIR PARTS

FITTING NO.

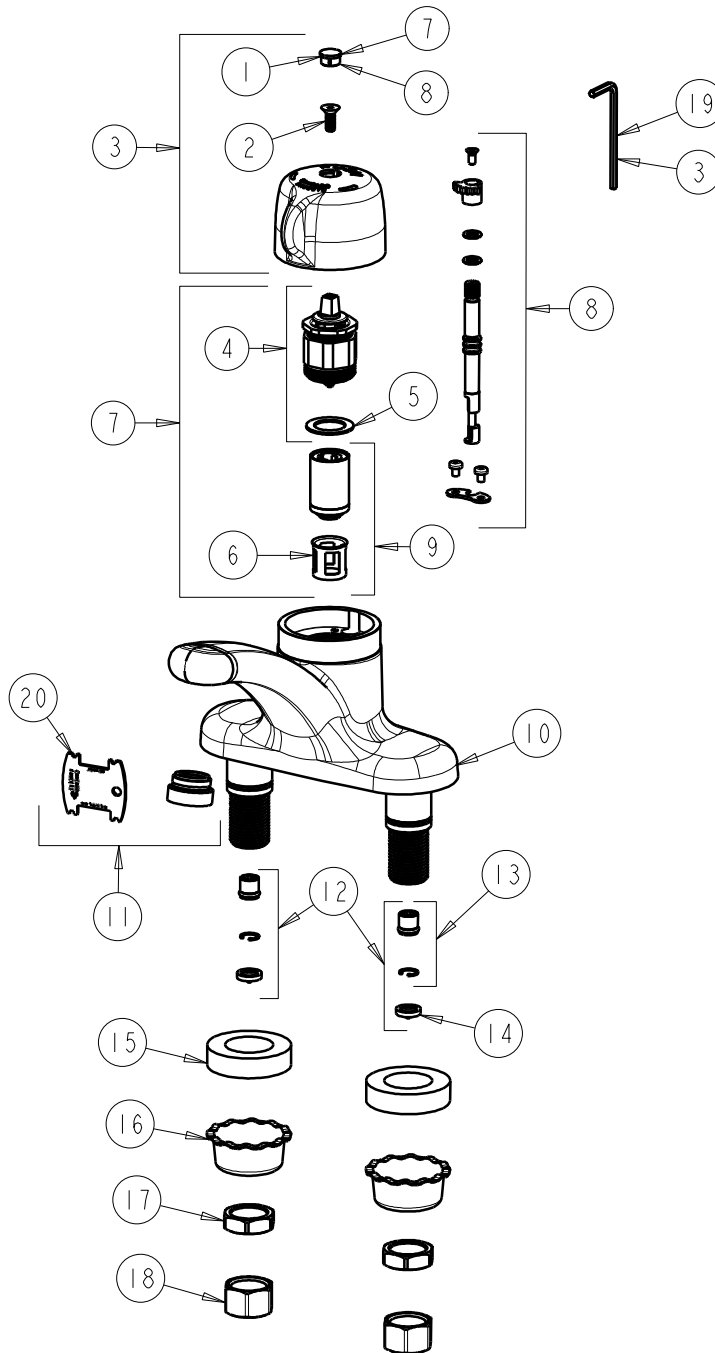
3300-ABCP

SUBMITTED MODEL NO.

ITEM NO.

FOR TECHNICAL ASSISTANCE
1-800-TEC-TRUE (1-800-832-8783)

BY: JAR DATE: 10-29-08
CHK: *[Signature]* REV:



ITEM	PART NO.	DESCRIPTION	ITEM	PART NO.	DESCRIPTION
			10	—	BODY (NOT SOLD SEPARATELY)
1	2500-005JKCP	HANDLE BUTTON	11	E2805JKCP	VP ECONO-FLO (.5 G.P.M.)
2	420-020JKNF	SCREW, 1/8 FLAT HEX HEAD X 1/2	12	3300-105JKNF	CHECK VALVE KIT
3	3300-102JKCP	HANDLE KIT	13	550-009KJKNF	CHECK CARTRIDGE ASSEMBLY
4	3300-003KJKNF	ACTUATOR ASSEMBLY	14	3300-005JKNF	FILTER/SCREEN - PAIR
5	3300-006JKNF	WASHER	15	555-313JKNF	WASHER
6	667-402JKNF	FILTER	16	1797-114JKNF	BASIN COCK WASHER
7	3300-103KJKNF	ACTUATOR & CARTRIDGE KIT	17	49-004JKRBF	LOCKNUT
8	3300-019KJKNF	MIXING STEM KIT V2	18	49-005JKRBF	COUPLING NUT
9	671-XJKNF	MVP CARTRIDGE	19	420-022JKNF	WRENCH, 1/8 HEX.
			20	3-024JKRCF	KEY, VP

↳ (3300-006JKNF REQUIRED - SOLD SEPARATELY)