

**CHICAGO FAUCETS**  
a Geberit company

2100 South Clearwater Drive  
Des Plaines, IL 60018  
Phone: 847-803-5000  
Fax: 847-803-5454  
www.chicagofaucets.com

# REPAIR PARTS

BY: JAR    DATE: 05-12-05  
CHK: *[Signature]*    REV: 12-17-07

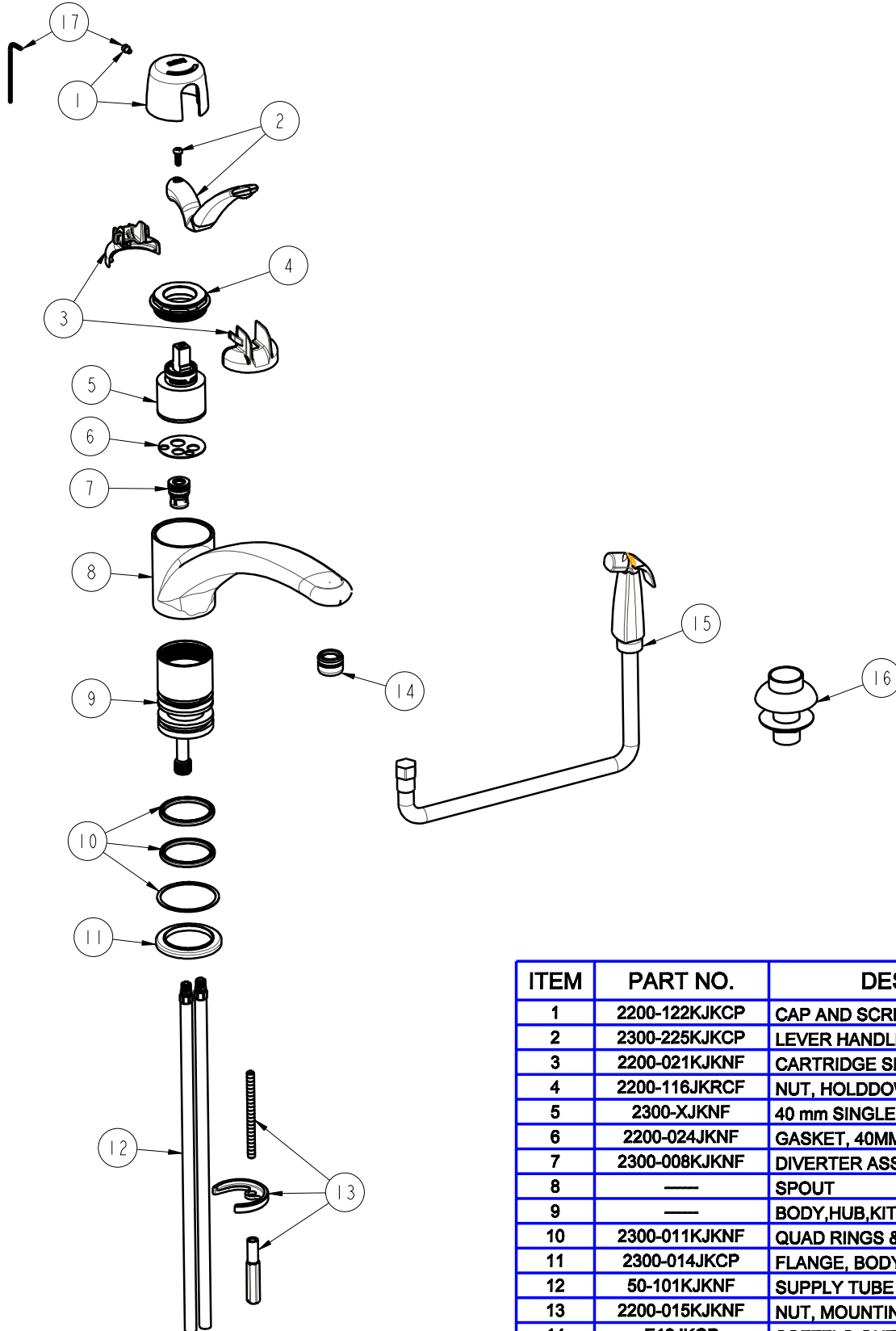
FITTING NO.

**2301-CP**

SUBMITTED MODEL NO.

ITEM NO.

**FOR TECHNICAL ASSISTANCE**  
1-800-TEC-TRUE (1-800-832-8783)



ITEM	PART NO.	DESCRIPTION
1	2200-122KJKCP	CAP AND SCREW ASSEMBLY
2	2300-225KJKCP	LEVER HANDLE, KITCHEN ASSEMBLY
3	2200-021KJKNF	CARTRIDGE SPIN CAP ASSEMBLY
4	2200-116JKRCF	NUT, HOLDDOWN
5	2300-XJKNF	40 mm SINGLE LEVER CARTRIDGE
6	2200-024JKNF	GASKET, 40MM CARTRIDGE
7	2300-008KJKNF	DIVERTER ASSEMBLY
8	—	SPOUT
9	—	BODY,HUB,KITCHEN W/SPRAY
10	2300-011KJKNF	QUAD RINGS & SLIP WASHER
11	2300-014JKCP	FLANGE, BODY
12	50-101KJKNF	SUPPLY TUBE ASSEMBLY
13	2200-015KJKNF	NUT, MOUNTING
14	E12JKCP	SOFTFLO OUTLET
15	1103-009KJKNF	SPRAY & HOSE (BLACK)
16	1103-014KJKNF	FLANGE ASSEMBLY (BLACK)
17	2200-002KJKNF	WRENCH & HEX KEY