

**CHICAGO FAUCETS**  


a Geberit company

2100 South Clearwater Drive  
 Des Plaines, IL 60018  
 Phone: 847-803-5000  
 Fax: 847-803-5454  
 www.chicagofaucets.com

**REPAIR PARTS**

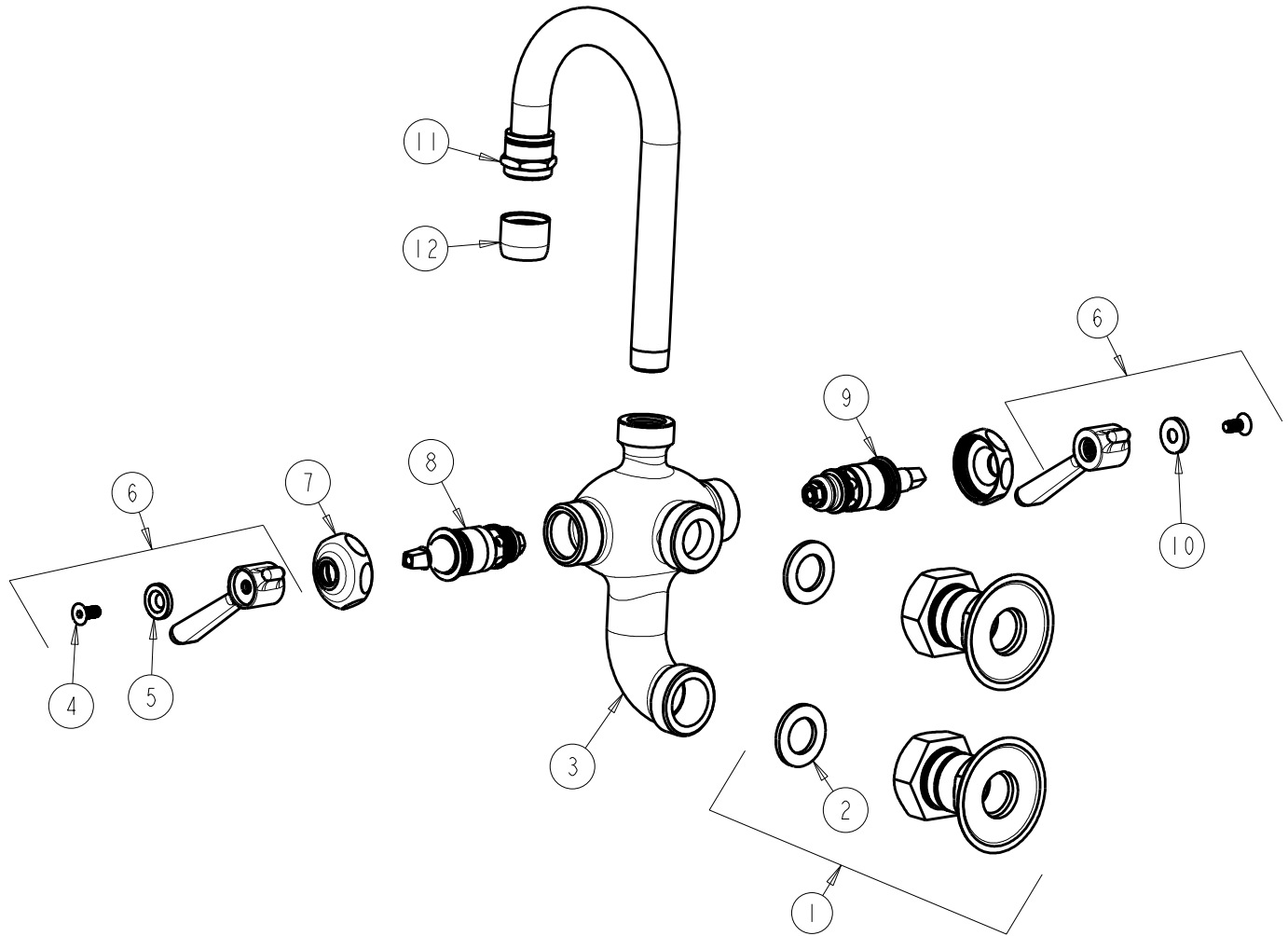
BY: JAR      DATE: 05-21-15  
 CHK: *JAR*      REV:

FITTING NO.  
**225-261E35-3ABCP**

SUBMITTED MODEL NO.

ITEM NO.

**FOR TECHNICAL ASSISTANCE**  
 1-800-TEC-TRUE (1-800-832-8783)



ITEM	PART NO.	DESCRIPTION
1	261-JKABCP	SHANK ASSEMBLY
2	65-006JKABNF	WASHER, 1.125 O.D. X .656 I.D. X .09
3	-----	VALVE BODY (NOT SOLD SEPARATELY)
4	420-020JKNF	SCREW, 1/8 FLAT HEX HEAD X 1/2
5	633-123JKNF	INDEX BUTTON (BLUE)
6	369-PRJKCP	HANDLE, 2-3/8" LEVER (PAIR)
7	1-214JKCP	CAP
8	1-099XTJKABNF	QUATURN CARTRIDGE (RH)
9	1-100XTJKABNF	QUATURN CARTRIDGE (LH)
10	633-023JKNF	INDEX BUTTON (RED)
11	225-002KJKABCP	SPOUT, TUBE & ADAPTER
12	E35JKABCP	OUTLET, AERATOR 1.5 GPM