

CHICAGO FAUCETS


a Geberit company

2100 South Clearwater Drive
 Des Plaines, IL 60018
 Phone: 847-803-5000
 Fax: 847-803-5454
 www.chicagofaucets.com

REPAIR PARTS

BY: JAR

DATE: 05-21-15

CHK: *JAR*

REV:

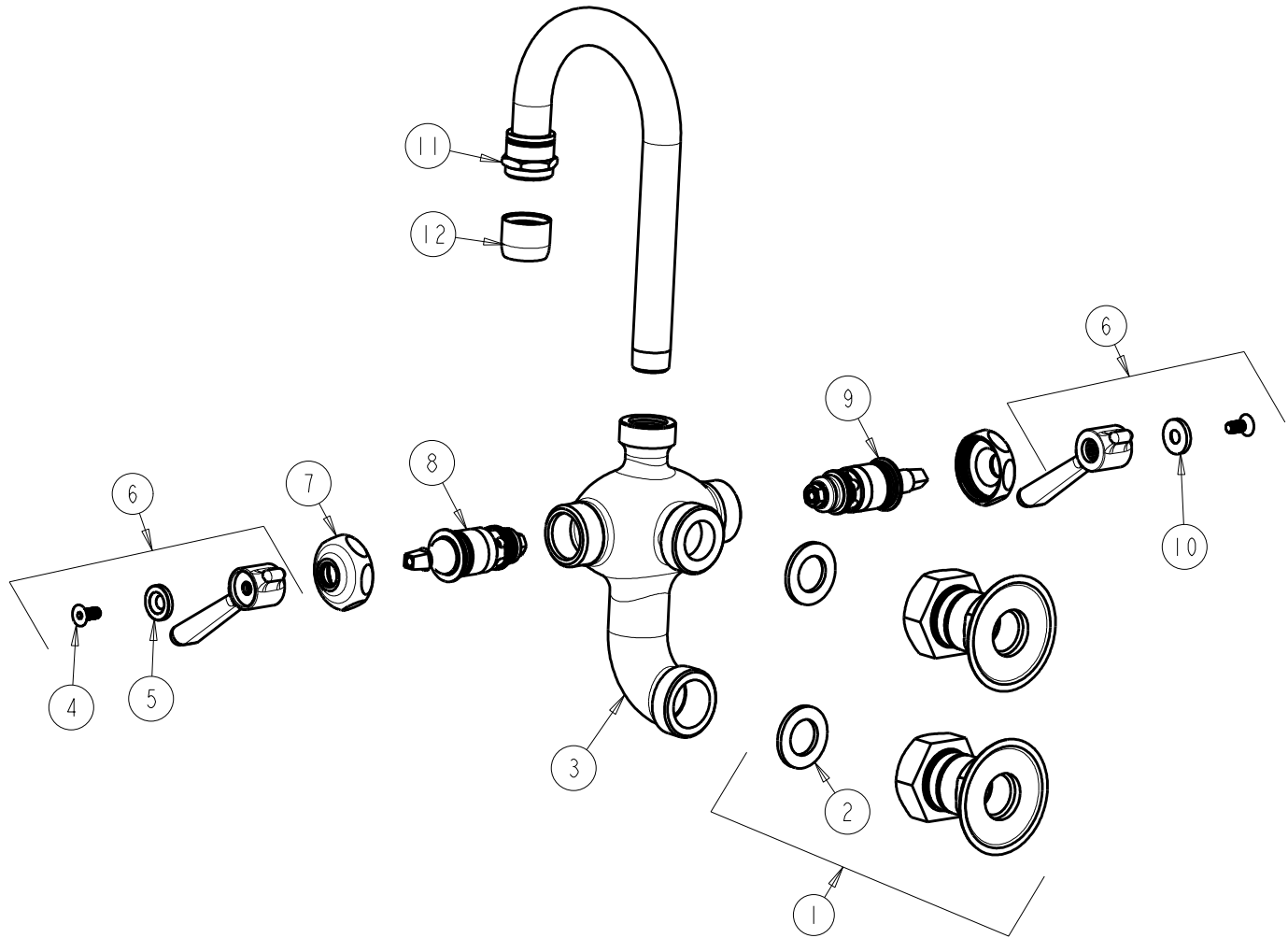
FITTING NO.

225-261E3-3ABCP

SUBMITTED MODEL NO.

ITEM NO.

FOR TECHNICAL ASSISTANCE
 1-800-TEC-TRUE (1-800-832-8783)



ITEM	PART NO.	DESCRIPTION
1	261-JKABCP	SHANK ASSEMBLY
2	65-006JKABNF	WASHER, 1.125 O.D. X .656 I.D. X .09
3	-----	VALVE BODY (NOT SOLD SEPARATELY)
4	420-020JKNF	SCREW, 1/8 FLAT HEX HEAD X 1/2
5	633-123JKNF	INDEX BUTTON (BLUE)
6	369-PRJKCP	HANDLE, 2-3/8" LEVER (PAIR)
7	1-214JKCP	CAP
8	1-099XTJKABNF	QUATURN CARTRIDGE (RH)
9	1-100XTJKABNF	QUATURN CARTRIDGE (LH)
10	633-023JKNF	INDEX BUTTON (RED)
11	225-002KJKABCP	SPOUT, TUBE & ADAPTER
12	E3JKABCP	OUTLET, AERATOR 2.2 GPM