

CHICAGO FAUCETS
a Geberit company

2100 South Clearwater Drive
Des Plaines, IL 60018
Phone: 847-803-5000
Fax: 847-803-5454
www.chicagofaucets.com

REPAIR PARTS

FITTING NO.

200-AL8-317CP

SUBMITTED MODEL NO.

BY: JAR

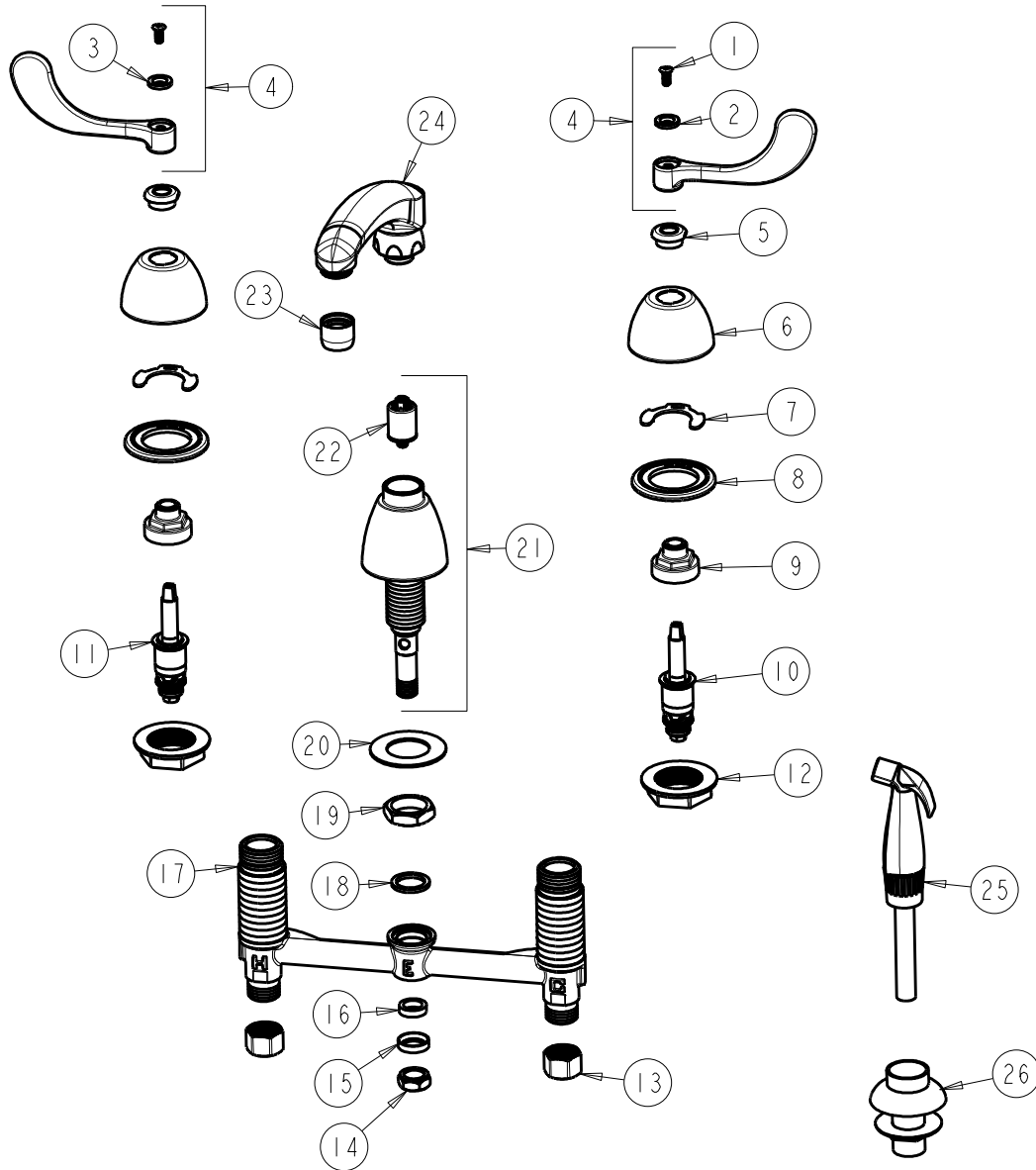
DATE: 05-29-09

CHK:

REV: 07-13-11

ITEM NO.

FOR TECHNICAL ASSISTANCE
1-800-TEC-TRUE (1-800-832-8783)



ITEM	PART NO.	DESCRIPTION	ITEM	PART NO.	DESCRIPTION
1	420-010JKRCF	SCREW, 10-32 UNC PH 1/2	14	689-013JKRBF	LOCKNUT FOR LAVATORY FITTINGS
2	633-123JKNF	INDEX BUTTON (BLUE)	15	250-087JKRBF	RETAINER
3	633-023JKNF	INDEX BUTTON (RED)	16	1797-029JKNF	RUBBER WASHER
4	317-PRJKCP	HANDLE, 4" WRISTBLADE (PAIR)	17	—	BODY, VALVE
5	422-113JKCP	ESCUTCHEON NUT	18	250-200JKNF	GASKET
6	250-082JKCP	ESCUTCHEON	19	250-054JKRBF	LOCKNUT
7	200-009JKNF	CLIP, RETAIN	20	50-014JKNF	STEEL WASHER
8	888-026JKNF	WASHER, SEALING	21	785-203JKKCP	SIDE SPRAY SPOUT BASE ASSEMBLY
9	274-014JKRBF	NUT, CAP	22	1103-006JKNF	DIVERTER VALVE
10	377-XTRHJKNF	RH QUATURN CARTRIDGE	23	E3JKCP	SOFTFLO AERATOR
11	377-XTLHJKNF	LH QUATURN CARTRIDGE	24	L8LESSE3JKCP	FOR PARTS SEE L8LESSE3JKCP
12	250-004JKNF	LOCKNUT	25	1103-009KJKNF	HOSE ASSEMBLY
13	49-005JKRBF	COUPLING NUT	26	1103-014KJKNF	FLANGE ASSEMBLY (BLACK)