

**CHICAGO FAUCETS**  
a Geberit company

2100 South Clearwater Drive  
Des Plaines, IL 60018  
Phone: 847-803-5000  
Fax: 847-803-5454  
www.chicagofaucets.com

**REPAIR PARTS**

FITTING NO.

**200-AGN8AE3-317CP**

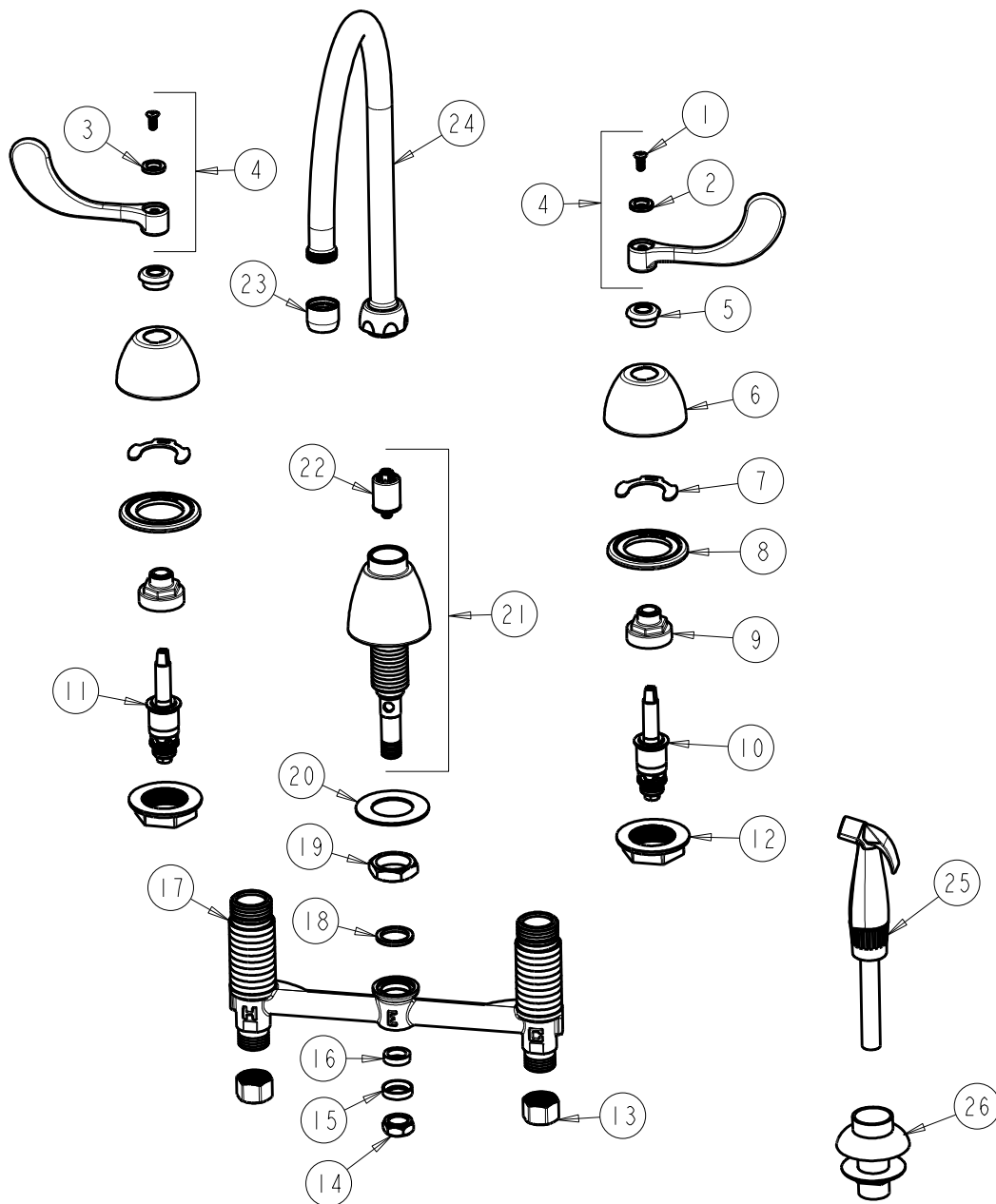
SUBMITTED MODEL NO.

BY: JAR DATE: 08-27-01

CHK: REV: 07-12-11

ITEM NO.

**FOR TECHNICAL ASSISTANCE**  
1-800-TEC-TRUE (1-800-832-8783)



ITEM	PART NO.	DESCRIPTION	ITEM	PART NO.	DESCRIPTION
1	420-010JKRCF	SCREW, 10-32 UNC PH 1/2	14	689-013JKRBF	LOCKNUT FOR LAVATORY FITTINGS
2	633-123JKNF	INDEX BUTTON (BLUE)	15	250-087JKRBF	RETAINER
3	633-023JKNF	INDEX BUTTON (RED)	16	1797-029JKNF	RUBBER WASHER
4	317-PRJKCP	HANDLE, 4" WRISTBLADE (PAIR)	17	—	BODY, VALVE
5	422-113JKCP	ESCUTCHEON NUT	18	250-200JKNF	GASKET
6	250-082JKCP	ESCUTCHEON	19	250-054JKRBF	LOCKNUT
7	200-009JKNF	CLIP, RETAIN	20	50-014JKNF	STEEL WASHER
8	888-026JKNF	WASHER, SEALING	21	785-203JKKCP	SIDE SPRAY SPOUT BASE ASSEMBLY
9	274-014JKRBF	NUT, CAP	22	1103-006JKNF	DIVERTER VALVE
10	377-XTRHJKNF	RH QUATURN CARTRIDGE	23	E3JKCP	SOFTFLO AERATOR
11	377-XTLHJKNF	LH QUATURN CARTRIDGE	24	GN8AJKCP	FOR PARTS SEE GN8AJKCP
12	250-004JKNF	LOCKNUT	25	1103-009JKJNF	HOSE ASSEMBLY
13	49-005JKRBF	COUPLING NUT	26	1103-014KJNF	FLANGE ASSEMBLY (BLACK)