

**CHICAGO FAUCETS**  
a Geberit company

2100 South Clearwater Drive  
Des Plaines, IL 60018  
Phone: 847-803-5000  
Fax: 847-803-5454  
www.chicagofaucets.com

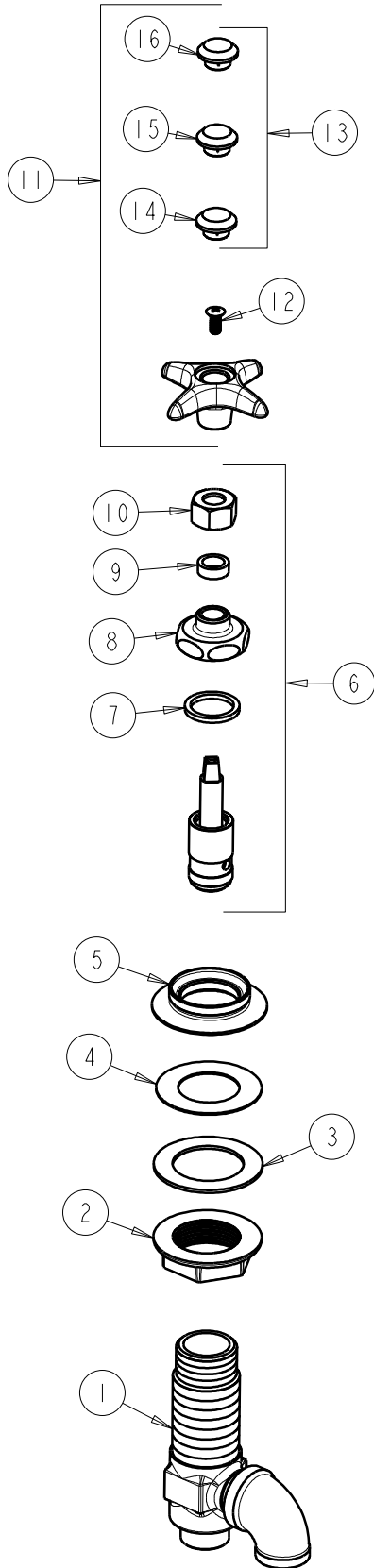
**REPAIR PARTS**

BY: JAR DATE: 09-09-09  
CHK: *JAR* REV:

FITTING NO.  
**1322-AGVSAM**  
SUBMITTED MODEL NO.

ITEM NO.

**FOR TECHNICAL ASSISTANCE**  
1-800-TEC-TRUE (1-800-832-8783)



ITEM	PART NO.	DESCRIPTION
1	---	VALVE BODY NOT SOLD SEPARATELY
2	250-004JKRBF	LOCKNUT
3	55-010JKNF	STEEL WASHER
4	739-056JKNF	RUBBER WASHER
5	1797-122JKSAM	FLANGE
6	962-XJKSAM	NEEDLE VALVE UNIT
7	1-043JKNF	GASKET, CAP 1 X .80 X .09
8	937-018JKSAM	CAP NUT
9	244-217JKNF	PACKING
10	937-010JKSAM	NUT
11	204-AGVJKSAM	4-ARM HANDLE W/ INDEX BUTTONS
12	420-010JKRCF	SCREW, 10-32 UNC PH 1/2
13	216-PPJKNF	PRE-PACK (AIR, GAS, VAC)
14	216-278JKNF	BUTTON 'AIR'
15	216-328JKNF	BUTTON 'GAS'
16	216-378JKNF	BUTTON 'VAC'