

CHICAGO FAUCETS
a Geberit company

2100 South Clearwater Drive
Des Plaines, IL 60018
Phone: 847-803-5000
Fax: 847-803-5454
www.chicagofaucets.com

REPAIR PARTS

FITTING NO.

1100-369CP

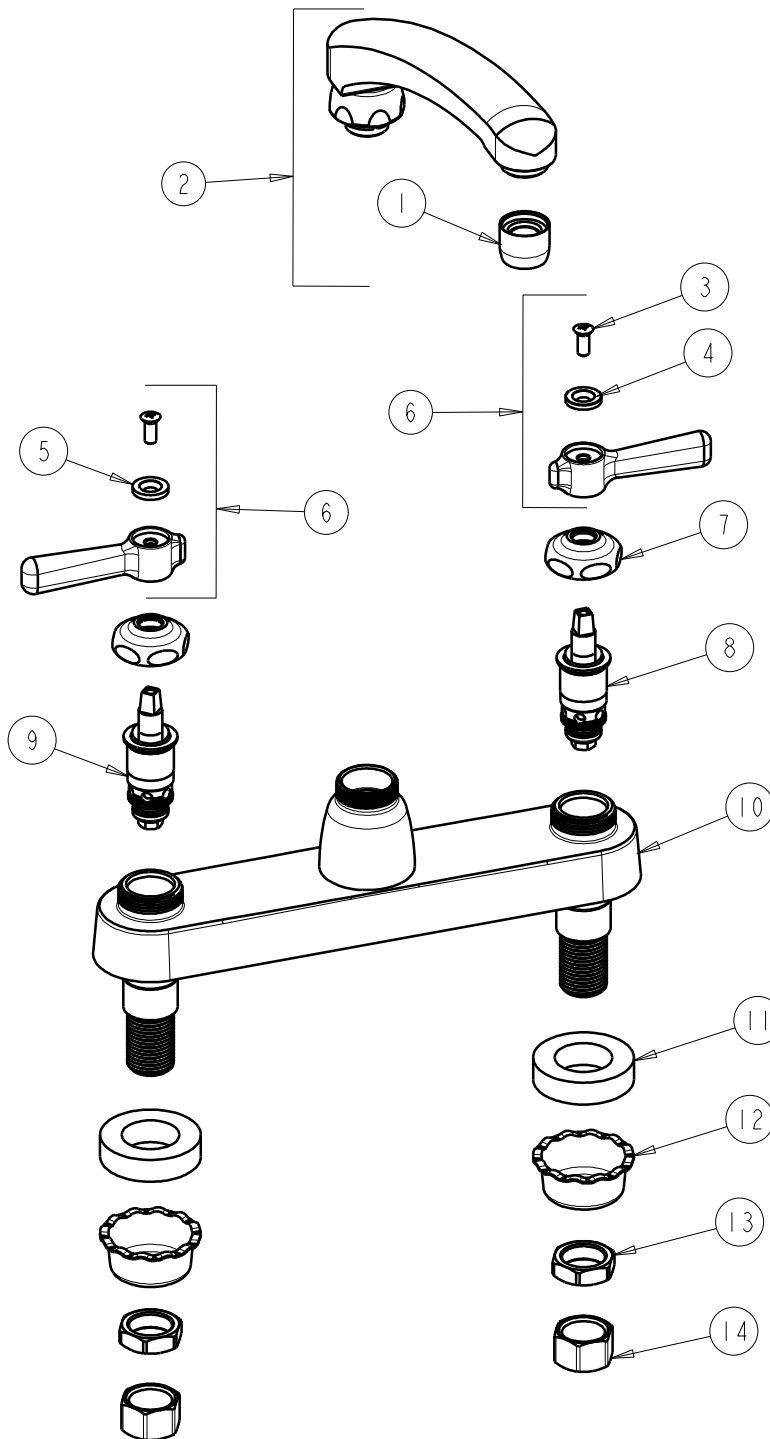
SUBMITTED MODEL NO.

BY: SID DATE: 02-23-09

CHK: *[Signature]* REV:

ITEM NO.

FOR TECHNICAL ASSISTANCE
1-800-TEC-TRUE (1-800-832-8783)



| ITEM | PART NO. | DESCRIPTION | ITEM | PART NO. | DESCRIPTION |
|------|--------------|------------------------------|------|--------------|----------------------------------|
| 1 | E3JKCP | SOFTFLO OUTLET | 8 | 1-099XTJKNF | QUATURN UNIT (RH) |
| 2 | L8JKCP | FOR PARTS SEE L8JKCP | 9 | 1-100XTJKNF | QUATURN UNIT (LH) |
| 3 | 420-010JKRCF | SCREW, 10-32 UNC PH 1/2 | 10 | — | VALVE BODY (NOT SOLD SEPARATELY) |
| 4 | 633-123JKNF | INDEX BUTTON (BLUE) | 11 | 555-313JKNF | WASHER |
| 5 | 633-023JKNF | INDEX BUTTON (RED) | 12 | 1797-114JKNF | BASIN COCK WASHER |
| 6 | 369-PRJKCP | LEVER HANDLE ASSEMBLY (PAIR) | 13 | 49-004JKRBF | LOCKNUT |
| 7 | 1-214JKCP | CAP | 14 | 49-005JKRBF | COUPLING NUT |