

**CHICAGO FAUCETS**  
a Geberit company

2100 South Clearwater Drive  
Des Plaines, IL 60018  
Phone: 847-803-5000  
Fax: 847-803-5454  
www.chicagofaucets.com

**REPAIR PARTS**

FITTING NO.

**1010-1003-3CP**

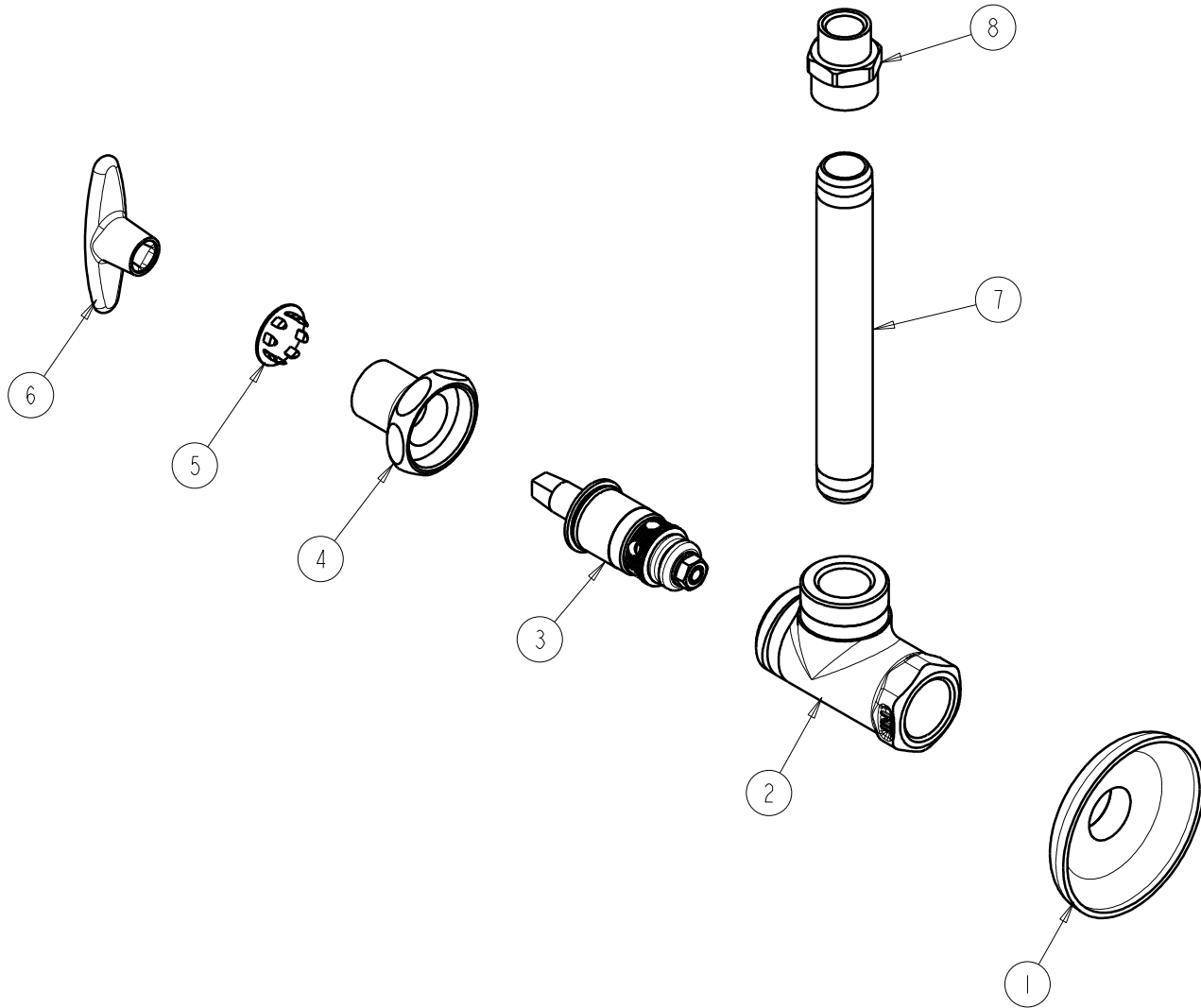
SUBMITTED MODEL NO.

ITEM NO.

**FOR TECHNICAL ASSISTANCE**  
**1-800-TEC-TRUE (1-800-832-8783)**

BY: SID DATE: 02-26-10

CHK: *[Signature]* REV:



ITEM	PART NO.	DESCRIPTION	ITEM	PART NO.	DESCRIPTION
1	1003-003JKCP	FLANGE	5	1-144JKCP	BUTTON
2	---	VALVE BODY (NOT SOLD SEPERATELY)	6	293-006JKRCF	HANDLE, TEE INCLUDES SCREW
3	217-XTLHJKNF	CARTRIDGE, SLO-COMPRESSION	7	1010-002JKCP	NIPPLE 3/8" NPT X 4-3/4"
4	1-246JKCP	NUT, CAP LOOSE KEY 1-1/8-18 UNEF	8	1010-001JKRCF	ADAPTER 1/4 NPT X 3/8 NPT