

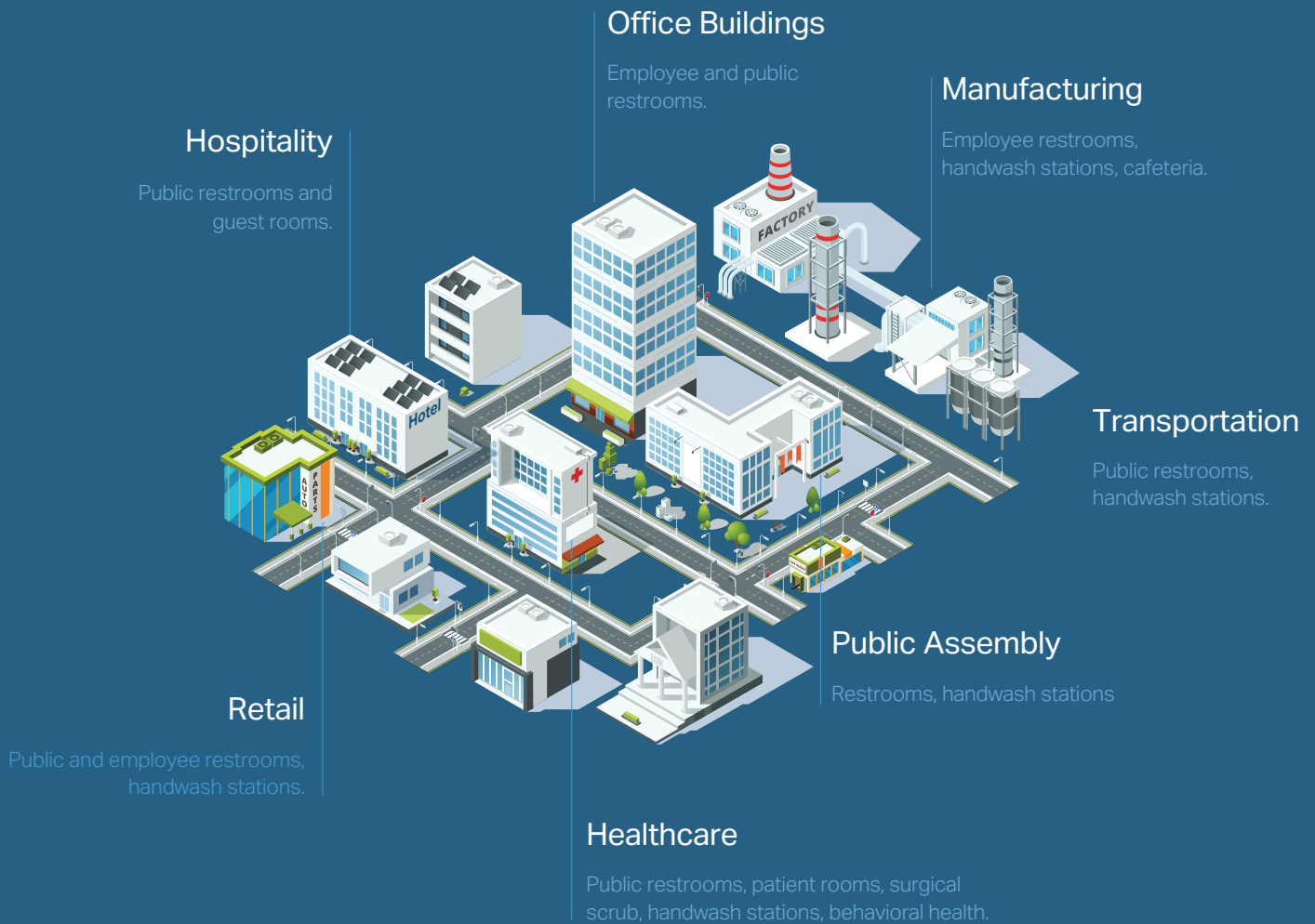
**CHICAGO
FAUCETS®**
Geberit Group

Touchless Faucets

Performance you can count on.



Style & Configuration For Any Application.



Touchless Solutions for Every Type of Building.

Chicago Faucets delivers a wide range of touchless faucet styles and options, unmatched durability, and the highest performance available. With the most dependable touchless faucets in the industry, we're the one company you can count on for every room in any building.



Why Chicago Faucets is **The Right Choice** for Your Touchless Faucets.

Our primary business is and always will be commercial faucets. This focus, combined with our commitment to quality, has made us experts on commercial applications and the number one choice of professionals for over a century. With Chicago Faucets, you can count on the highest quality, innovative features, and unparalleled support.

Look for the symbols below on our products and at chicagofaucets.com. They ensure you're getting the right faucets and fittings for your building.

ECAST Lead-Free
brass construction

Durable and safe: one quarter of one percent (0.25%) or less total lead content by weighted average.

TempShield Scald Protection
built-in

Meet code, reduce installation time with products featuring integrated ASSE 1070 compliant scald protection.

CF NOW! Quick Ship
program

We're ready when you are with 3-day shipment on many products plus 24-hour and same day shipment availability.

BUY AMERICAN ACT COMPLIANT American-Made
products

Over 98% of our products are manufactured and assembled in the United States

LTPS Power that lasts (and lasts).

The Long Term Power System (LTPS) is the perfect solution for any standard commercial application, providing maintenance-free power for more than 15 years under normal use.

SSPS A Maintenance-free and Energy Efficient power option.

The Self-sustaining Power System (SSPS) uses the simple flow of water to create and store power. Simply install below deck on the water supply line. There's no need to replace batteries or wire the faucet to the building's power supply.

EBPS A Safeguard against power outages.

The Emergency Backup Power System (EBPS) is an integrated backup power system available on select HyTronic and E-Tronic 40 AC-powered faucets.

Table of Contents

				
EVR 4-5	E-Tronic® 80 6-7	E-Tronic® 40 8-9	EQ® Series 10-13	HyTronic® 14-17
				
HyTronic® TempShield® 18-21	HyTronic® Patient Care 22-24	ELR 25	Alpina® 26	

EVR Series

Hard Working overachiever.

The EVR Series combines the added safety and convenience of touchless operation with the durability of a heavy-duty, one-piece cast brass body. Power options and mixing – including integrated scald protection – are concealed in a secure, compact control box.

Durable construction

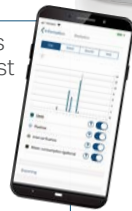
Heavy-duty, one-piece cast brass body with vandal resistant outlet designed to withstand abuse and tampering.

Improved user experience

Higher and longer spout reach combined with dependable electronics, improving the user experience.

The **CF Connect** App provides a secure and easy way to adjust and maintain the faucet with a smartphone.

- Hygiene Flush eliminates stagnant water from the plumbing system and removes harmful bacteria
- Six field-adjustable modes for metering, water savings, and detection ranges
- Track Usage

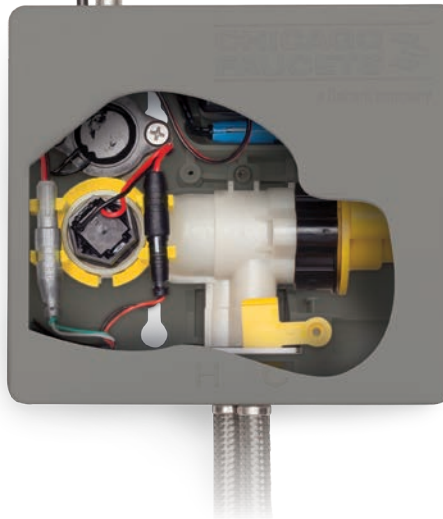


ASSE 1070 certified scald protection

Available with integral ASSE 1070 certified protection.

Secure, compact control box for any application

Conceals and secures power, solenoid, mixing valve, and supply in a compact box.



Options Designed for a **Safer** and **Easier** Experience.



Integrated ASSE 1070 thermostatic protection.



Maintenance-free power for 15 years or more.



EVR

	Power Source					Mixer		Flow Rate	
	AC	DC	EBPS	LTPS	SSPS	None	Concealed	0.35 GPM	0.5 GPM
EVR-A12D-41ABCPT	■	—	—	—	—	■	—	■	—
EVR-A12A-41ABCPT	■	—	—	—	—	■	—	—	■
EVR-A12D-42ABCPT*	■	—	—	—	—	—	■	■	—
EVR-A12A-42ABCPT*	■	—	—	—	—	—	■	—	■
EVR-A12D-43ABCPT**	■	—	—	—	—	—	■	■	—
EVR-A12A-43ABCPT**	■	—	—	—	—	—	■	—	■
EVR-A12D-11ABCPT	—	■	—	—	—	■	—	■	—
EVR-A12A-11ABCPT	—	■	—	—	—	■	—	■	—
EVR-A12D-12ABCPT*	—	■	—	—	—	—	■	■	—
EVR-A12A-12ABCPT*	—	■	—	—	—	—	■	—	■
EVR-A12D-13ABCPT**	—	■	—	—	—	—	■	■	—
EVR-A12A-13ABCPT**	—	■	—	—	—	—	■	—	■
EVR-A12D-61ABCPT	—	—	—	■	—	■	—	■	—
EVR-A12A-61ABCPT	—	—	—	■	—	■	—	—	■
EVR-A12D-62ABCPT*	—	—	—	■	—	—	■	■	—
EVR-A12A-62ABCPT*	—	—	—	■	—	—	■	—	■
EVR-A12D-63ABCPT**	—	—	—	■	—	—	■	■	—
EVR-A12A-63ABCPT**	—	—	—	■	—	—	■	—	■

*Mechanical Mixing Valve ** ASSE 1070 Certified Thermostatic Mixing Valve

LTPS

Power that lasts (and lasts).

The Long Term Power System (LTPS) is the perfect solution for any standard commercial application, providing maintenance-free power for more than 15 years under normal use. No additional wiring, no need for an electrician, and no periodic battery replacement. Just plug the power pack into the faucet, and enjoy years of maintenance-free operation.



E-Tronic® 80

The complete solution for safe, touchless convenience.

Above-deck electronics and integrated scald protection* help to make the E-Tronic® 80 one of the very best touchless faucet solutions for any commercial restroom application. Available in a choice of **polished chrome or matte black finish**. Plus, you can pair the faucet with a **matching touchless soap dispenser** for the ultimate in restroom hygiene and convenience.

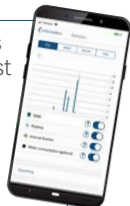


ASSE 1070 certified scald protection*

Available with integral ASSE 1070 certified protection*. Cuts installation time by 50%. Eliminates as many as six leak points.

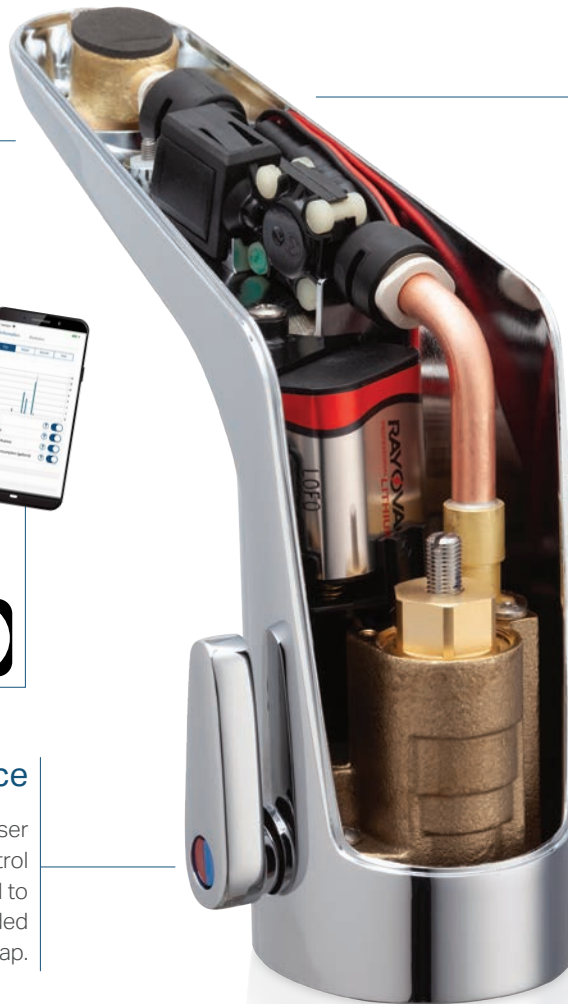
The **CF Connect** App provides a secure and easy way to adjust and maintain the faucet with a smartphone.

- Hygiene Flush eliminates stagnant water from the plumbing system and removes harmful bacteria
- Six field-adjustable modes for metering, water savings, and detection ranges
- Track Usage



User convenience

Dual-supply models feature user adjustable temperature control that can be easily converted to concealed control with included vandal resistant cap.



Saves water

Adjustable run time with vandal resistant outlet options from .35 to 1.5 GPM.

Fast and Easy Installation

All electronics are above deck for fast installation and easy maintenance. Includes stainless steel hoses.

Dependable operation

Multiple field-adjustable modes and detection ranges for optimum performance.

Matching soap dispenser

Pair the faucet with a matching soap dispenser for the ultimate in restroom hygiene and convenience.



Options Designed for a **Safer** and **Easier** Experience.



Integrated ASSE 1070 thermostatic protection.*



Maintenance-free power for 15 years or more.

* U.S. Patent No. 11,697,929. Only models with optional thermostatic mixer are ASSE 1070 certified.



E-Tronic® 80

	Power Source					Mixer				Flow Rate	
	AC	DC	EBPS	LTPS	SSPS	None	Concealed	User Adjustable	External	0.35 GPM	0.5 GPM
Polished Chrome Finish											
E80-A11D-41ABCPT	■	—	—	—	—	■	—	—	—	■	—
E80-A11A-41ABCPT	■	—	—	—	—	■	—	—	—	—	■
E80-A11H-41ABCPT^	■	—	—	—	—	■	—	—	—	—	■
E80-A11D-46ABCPT*	■	—	—	—	—	—	—	■	—	■	—
E80-A11A-46ABCPT*	■	—	—	—	—	—	—	■	—	—	■
E80-A11H-46ABCPT^	■	—	—	—	—	—	—	—	—	—	■
E80-A11D-47ABCPT**	■	—	—	—	—	—	—	■	—	■	—
E80-A11A-47ABCPT**	■	—	—	—	—	—	—	■	—	—	■
E80-A11H-47ABCPT**^	■	—	—	—	—	—	—	■	—	—	■
E80-A11D-11ABCPT	—	■	—	—	—	■	—	—	—	■	—
E80-A11A-11ABCPT	—	■	—	—	—	■	—	—	—	—	■
E80-A11H-11ABCPT^	—	■	—	—	—	■	—	—	—	—	■
E80-A11D-16ABCPT*	—	■	—	—	—	—	—	■	—	■	—
E80-A11A-16ABCPT*	—	■	—	—	—	—	—	■	—	—	■
E80-A11H-16ABCPT^	—	■	—	—	—	—	—	■	—	—	■
E80-A11D-17ABCPT**	—	■	—	—	—	—	—	■	—	■	—
E80-A11A-17ABCPT**	—	■	—	—	—	—	—	■	—	—	■
E80-A11H-17ABCPT**^	—	■	—	—	—	—	—	■	—	—	■
E80-A11D-61ABCPT	—	—	—	■	—	■	—	—	—	■	—
E80-A11A-61ABCPT	—	—	—	■	—	■	—	—	—	—	■
E80-A11H-61ABCPT^	—	—	—	■	—	■	—	—	—	—	■
E80-A11D-66ABCPT*	—	—	—	■	—	—	—	■	—	■	—
E80-A11A-66ABCPT*	—	—	—	■	—	—	—	■	—	—	■
E80-A11H-61ABCPT^	—	—	—	■	—	—	—	■	—	—	■
E80-A11D-67ABCPT**	—	—	—	■	—	—	—	■	—	■	—
E80-A11A-67ABCPT**	—	—	—	■	—	—	—	■	—	—	■
E80-A11H-61ABCPT**^	—	—	—	■	—	—	—	■	—	—	■
Matte Black Finish											
E80-A11A-41ABMBT	■	—	—	—	—	■	—	—	—	—	■
E80-A11A-47ABMBT**	■	—	—	—	—	—	—	■	—	—	■
E80-A11D-41ABMBT	■	—	—	—	—	■	—	—	—	■	—
E80-A11D-47ABMBT**	■	—	—	—	—	—	—	■	—	■	—
E80-A11A-11ABMBT	—	■	—	—	—	■	—	—	—	■	—
E80-A11A-17ABMBT**	—	■	—	—	—	—	—	■	—	—	■
E80-A11D-11ABMBT	—	■	—	—	—	■	—	—	—	■	—
E80-A11D-17ABMBT**	—	■	—	—	—	—	—	■	—	■	—
E80-A11A-61ABMBT	—	—	—	■	—	■	—	—	—	—	■
E80-A11A-67ABMBT**	—	—	—	■	—	—	—	■	—	—	■
E80-A11D-61ABMBT	—	—	—	■	—	■	—	—	—	■	—
E80-A11D-67ABMBT**	—	—	—	■	—	—	—	■	—	■	—

*Mechanical Mixing Valve ** ASSE 1070 Certified Thermostatic Mixing Valve ^Laminar

E-Tronic® 40

Touchless Convenience combined with Chicago Faucets durability.

The E-Tronic® 40 is a great option for your restroom with advanced technology for dependability, convenience, and water savings. The hermetically sealed, above-deck electronics offer easy maintenance and long-term reliability.



Saves water

Adjustable run time with vandal resistant low-flow outlet.

Metal construction

Durable metal construction for long life.

Easy to install

4" base with single supply fits single hole and 4" sinks. An accessory deck plate for 8" centers is available.

The **CF Connect** App provides a secure and easy way to adjust and maintain the faucet with a smartphone.

- Hygiene Flush eliminates stagnant water from the plumbing system and removes harmful bacteria
- Six field-adjustable modes for metering, water savings, and detection ranges
- Track Usage



Options Designed for a **Safer** and **Easier** Experience.

EBPS

Integrated backup power system for AC faucets.

LTPS

Maintenance-free power for 15 years or more.

SSPS

Simply uses the flow of water to create power.



E-Tronic® 40

	Power Source					Mixer				Flow Rate		
	AC	DC	EBPS	LTPS	SSPS	None	Concealed	User Adjustable	External	0.35 GPM	0.5 GPM	1.0 GPM
116.029.AB.1T	■	—	—	—	—	■	—	—	—	—	—	■
116.706.AB.1T	■	—	—	—	—	■	—	—	—	—	■	—
116.019.AB.1T	—	■	—	—	—	■	—	—	—	—	—	■
116.606.AB.1T	—	■	—	—	—	■	—	—	—	—	■	—
116.980.AB.1T	—	■	—	—	—	■	—	—	—	■	—	—
116.996.AB.1T	—	■	—	—	—	■	—	—	—	—	■	■
116.707.AB.1T	—	—	■	—	—	■	—	—	—	—	■	—
116.699.AB.1T	—	—	—	■	—	■	—	—	—	—	■	—
116.956.AB.1T	—	—	—	—	■	■	—	—	—	—	■	—
116.966.AB.1T*	—	—	—	—	■	—	—	—	■	—	■	—
116.976.AB.1T**	—	—	—	—	■	—	—	—	■	—	■	—

*Mechanical Mixing Valve ** ASSE 1070 Certified Thermostatic Mixing Valve

SSPS

A **Maintenance-free** and **Energy Efficient** power option.

SSPS uses the simple flow of water to create and store power. Simply install below deck on the water supply line. There's no need to replace batteries or wire the faucet to the building's power supply. SSPS is easy to install and provides years of worry-free performance.



Meet the Next Generation of touchless faucets.

We took what we know about building the highest quality commercial faucets in the world and combined it with advanced electronics. The result? EQ®, the next generation of electronic faucets: easy to install, easy to operate, and easy to maintain.

Durable construction

Heavy-duty, one-piece solid brass spout and waterproof electronics provide unsurpassed reliability.

Easy installation

Braided hose and electronics cable pre-installed for simple plug-and-play installation.

Matching soap dispenser

Pair the faucet with a matching soap dispenser for the ultimate in restroom hygiene and convenience.



Smart outlet

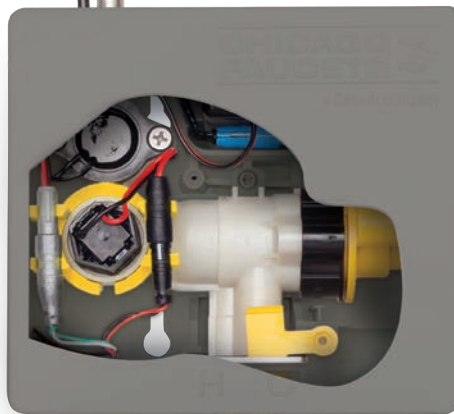
Integrates electronics module, sensing eye, and aerator for a clean look and dependable operation.

Water conserving

Low flow outlets combined with smart technology help reduce water usage by as much as 77%.*

The **EQ® Connect App** provides an easy way to program and maintain select Bluetooth-enabled EQ® touchless faucets.

- Hygiene Flush eliminates stagnant water from the plumbing system and removes harmful bacteria
- Quickly Identify Faucets
- Simple Navigation & Customization
- Download Documentation
- Easy Adjustments



Compact control box

The heart of every EQ® faucet, the EQ control box, houses everything needed for faucet operation including power, solenoid, mixing valve, and supply.

Simple connections

Supply hoses are pre-installed for fast, easy connection to stops.

Options Designed for a **Safer** and **Easier** Experience.



Integrated ASSE 1070 thermostatic protection.



Maintenance-free power for 15 years or more.



Simply uses the flow of water to create power.

* Comparison is based on using EQ® faucet with a 0.5 GPM outlet to replace a faucet with a 2.2 GPM outlet. Water savings is based on 40 seconds of usage. The faucet with a 2.2 GPM flow rate would use 1.47 gallons of water while the EQ® faucet would use .33 gallons of water.



Curved Spout, Single Hole with Bluetooth® communication

	Power Source					Mixer		Flow Rate	
	AC Hard-wire	AC Plug-in	DC	LTPS	SSPS	None	Concealed	0.35 GPM	0.5 GPM
EQ-A11A-11ABCPT	—	—	■	—	—	■	—	—	■
EQ-A11A-12ABCPT*	—	—	■	—	—	—	■	—	■
EQ-A11A-13ABCPT**	—	—	■	—	—	—	■	—	■
EQ-A11A-31ABCPT	—	■	—	—	—	■	—	—	■
EQ-A11A-32ABCPT*	—	■	—	—	—	—	■	—	■
EQ-A11A-33ABCPT**	—	■	—	—	—	—	■	—	■
EQ-A11A-61ABCPT	—	—	—	■	—	■	—	—	■
EQ-A11A-62ABCPT*	—	—	—	■	—	—	■	—	■
EQ-A11A-63ABCPT**	—	—	—	■	—	—	■	—	■

*Mechanical Mixing Valve

** ASSE 1070 Certified Thermostatic Mixing Valve



High Arc Spout, Single Hole with Bluetooth® communication

	Power Source					Mixer		Flow Rate	
	AC Hard-wire	AC Plug-in	DC	LTPS	SSPS	None	Concealed	0.35 GPM	0.5 GPM
EQ-C11A-11ABCPT	—	—	■	—	—	■	—	—	■
EQ-C11A-12ABCPT*	—	—	■	—	—	—	■	—	■
EQ-C11A-13ABCPT**	—	—	■	—	—	—	■	—	■
EQ-C11A-32ABCPT*	—	■	—	—	—	—	■	—	■
EQ-C11A-51ABCPT	■	—	—	—	—	■	—	—	■
EQ-C11A-53ABCPT**	■	—	—	—	—	—	■	—	■
EQ-C11A-61ABCPT	—	—	—	■	—	■	—	—	■
EQ-C11A-62ABCPT*	—	—	—	■	—	—	■	—	■
EQ-C11A-63ABCPT**	—	—	—	■	—	—	■	—	■

*Mechanical Mixing Valve

** ASSE 1070 Certified Thermostatic Mixing Valve



Curved Spout, Single Hole

	Power Source					Mixer		Flow Rate	
	AC Hard-wire	AC Plug-in	DC	LTPS	SSPS	None	Concealed	0.35 GPM	0.5 GPM
EQ-C11A-51ABCP	■	—	—	—	—	■	—	—	■
EQ-A11A-53ABCP**	■	—	—	—	—	—	■	—	■
EQ-A21A-55ABCP**	■	—	—	—	—	—	—	—	■
EQ-A11A-31ABCP	—	■	—	—	—	■	—	—	■
EQ-A11A-31ABBN^	—	■	—	—	—	■	—	—	■
EQ-A11C-33ABCP**	—	■	—	—	—	—	■	■	—
EQ-A11A-33ABCP	—	■	—	—	—	—	■	—	■
EQ-A21A-35ABCP	—	■	—	—	—	—	—	—	■
EQ-A11C-11ABCP	—	—	■	—	—	■	—	■	—
EQ-A11A-11ABCP	—	—	■	—	—	■	—	—	■
EQ-A11A-11ABBN^	—	—	■	—	—	■	—	—	■
EQ-A11A-12ABCP*	—	—	■	—	—	—	■	—	■
EQ-A11C-13ABCP**	—	—	■	—	—	—	■	■	—
EQ-A11A-13ABCP**	—	—	■	—	—	—	■	—	■
EQ-A21A-15ABCP**	—	—	■	—	—	—	—	—	■
EQ-A11C-61ABCP	—	—	—	■	—	■	—	■	—
EQ-A11A-61ABCP	—	—	—	■	—	■	—	—	■
EQ-A11A-62ABCP*	—	—	—	■	—	—	■	—	■
EQ-A11C-63ABCP**	—	—	—	■	—	—	■	■	—
EQ-A11A-63ABCP**	—	—	—	■	—	—	■	—	■
EQ-A11C-21ABCP	—	—	—	—	■	■	—	■	—
EQ-A11C-23ABCP**	—	—	—	—	■	—	■	■	—
EQ-A21C-25ABCP**	—	—	—	—	■	—	■	■	—
EQ-A11C-23ABBN**^	—	—	—	—	■	—	—	■	—

*Mechanical Mixing Valve ** ASSE 1070 Certified Thermostatic Mixing Valve ^Brushed Nickel



Curved Spout, 4" Centers

	Power Source					Mixer		Flow Rate	
	AC Hard-wire	AC Plug-in	DC	LTPS	SSPS	None	Concealed	0.35 GPM	0.5 GPM
EQ-A12A-51ABCP	■	—	—	—	—	■	—	—	■
EQ-A12A-33ABCP**	—	■	—	—	—	—	■	—	■
EQ-A12A-11ABCP	—	—	■	—	—	■	—	—	■
EQ-A12A-12ABCP*	—	—	■	—	—	—	■	—	■
EQ-A12C-13ABCP**	—	—	■	—	—	—	■	—	■
EQ-A12A-13ABCP**	—	—	■	—	—	—	■	■	—
EQ-A12C-23ABCP**	—	—	—	—	■	—	■	■	—

*Mechanical Mixing Valve **Thermostatic Mixing Valve



Curved Spout, 8" Centers

	Power Source					Mixer		Flow Rate	
	AC Hard-wire	AC Plug-in	DC	LTPS	SSPS	None	Concealed	0.35 GPM	0.5 GPM
EQ-A13A-13ABCP**	—	—	■	—	—	—	■	—	■

** ASSE 1070 Certified Thermostatic Mixing Valve



EQ® Arc, Single Hole

	Power Source					Mixer		Flow Rate	
	AC Hard-wire	AC Plug-in	DC	LTPS	SSPS	None	Concealed	0.35 GPM	0.5 GPM
EQ-R11A-31ABCP	—	■	—	—	—	■	—	—	■
EQ-R11A-33ABCP*	—	■	—	—	—	—	■	—	■
EQ-R11A-11ABCP	—	—	■	—	—	■	—	—	■
EQ-R11A-13ABCP*	—	—	■	—	—	—	■	—	■
EQ-R11A-61ABCP	—	—	—	■	—	■	—	—	■
EQ-R11A-63ABCP*	—	—	—	■	—	—	■	—	■
EQ-R11A-21ABCP	—	—	—	—	■	■	—	—	■
EQ-R11A-23ABCP*	—	—	—	—	■	—	■	—	■
EQ-R11C-21ABCP	—	—	—	—	■	—	■	■	—
EQ-R11C-23ABCP*	—	—	—	—	■	—	■	■	—

*ASSE 1070 Certified Thermostatic Mixing Valve



High Arc Spout, Single Hole

	Power Source					Mixer		Flow Rate	
	AC Hard-wire	AC Plug-in	DC	LTPS	SSPS	None	Concealed	0.35 GPM	0.5 GPM
EQ-C11A-51ABCP	■	—	—	—	—	■	—	—	■
EQ-C11A-53ABCP**	■	—	—	—	—	—	■	—	■
EQ-C11A-32ABCP*	—	■	—	—	—	—	■	—	■
EQ-C11A-33ABCP**	—	■	—	—	—	—	■	—	■
EQ-C11A-11ABCP	—	—	■	—	—	■	—	—	■
EQ-C11A-11ABBN^	—	—	■	—	—	■	—	—	■
EQ-C11A-12ABCP*	—	—	■	—	—	—	■	—	■
EQ-C11A-13ABCP**	—	—	■	—	—	—	■	—	■
EQ-C11A-13ABBN**^	—	—	■	—	—	—	■	—	■
EQ-C21A-15ABCP**	—	—	■	—	—	—	—	—	■
EQ-C11A-61ABCP	—	—	—	■	—	■	—	—	■
EQ-C11A-62ABCP*	—	—	—	■	—	—	■	—	■
EQ-C11A-63ABCP**	—	—	—	■	—	—	■	—	■
EQ-C11C-21ABCP	—	—	—	—	■	■	—	■	—
EQ-C11A-62ABCP*	—	—	—	—	■	—	■	—	■
EQ-C11C-23ABCP**	—	—	—	—	■	—	■	■	—
EQ-C21C-25ABCP**	—	—	—	—	■	—	—	■	—

*Mechanical Mixing Valve ** ASSE 1070 Certified Thermostatic Mixing Valve ^Brushed Nickel



High Arc Spout, 4" Centers

	Power Source					Mixer		Flow Rate	
	AC Hard-wire	AC Plug-in	DC	LTPS	SSPS	None	Concealed	0.35 GPM	0.5 GPM
EQ-C22A-15ABCP**	—	—	■	—	—	—	—	—	■

** ASSE 1070 Certified Thermostatic Mixing Valve

HyTronic® Series

The Number One Choice for touchless faucets.

Our HyTronic® Series touchless faucets set the standard for reliability and user comfort in commercial buildings everywhere. An exceptional detection system means the faucet turns on and off when it should; no run-ons or drop-offs.

Reliable operation and long life

A high quality, German-made solenoid in every one of our HyTronic® faucets operates reliably through millions of activations.



Engineered and manufactured in USA

All of our touch free faucets are assembled in our US facility and backed by the world's leading manufacturer of commercial faucets since 1901.

Broadest range of options

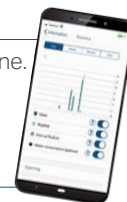
The widest range of spout designs, fully integrated features, and accessories means you'll always find the perfect faucet for any application.

Compliance made easy

Easy programmability and a comprehensive range of flow options help you meet the most stringent conservation requirements, including LEED v4.

The **CF Connect App** provides a secure and easy way to adjust and maintain the faucet with a smartphone.

- Hygiene Flush eliminates stagnant water from the plumbing system and removes harmful bacteria
- Six field-adjustable modes for metering, water savings, and detection ranges
- Track Usage



Options Designed for a **Safer** and **Easier** Experience.

EBPS

Guards against water loss during a power outage.

LTPS

Maintenance-free power for 15 years or more.

SSPS

Simply uses the flow of water to create power.



Contemporary Spout

	Power Source					Mixer				Flow Rate	
	AC	DC	EBPS	LTPS	SSPS	None	Concealed	User Adjustable	External Thermostatic	0.35 GPM	0.5 GPM
116.102.AB.1T	■	—	—	—	—	■	—	—	—	—	■
116.102.AB.4T	■	—	—	—	—	■	—	—	—	■	—
116.112.AB.1T	■	—	—	—	—	—	■	—	—	—	■
116.112.AB.4T	■	—	—	—	—	—	■	—	—	■	—
116.122.AB.1T	■	—	—	—	—	—	—	■	—	—	■
116.122.AB.4T	■	—	—	—	—	—	—	■	—	■	—
116.202.AB.1T	—	■	—	—	—	■	—	—	—	—	■
116.202.AB.4T	—	■	—	—	—	■	—	—	—	■	—
116.212.AB.1T	—	■	—	—	—	—	■	—	—	—	■
116.212.AB.4T	—	■	—	—	—	—	■	—	—	■	—
116.222.AB.1T	—	■	—	—	—	—	—	■	—	—	■
116.222.AB.4T	—	■	—	—	—	—	—	■	—	■	—
116.599.AB.1T	—	—	—	■	—	■	—	—	—	—	■
116.599.AB.4T	—	—	—	■	—	■	—	—	—	■	—
116.645.AB.1T	—	—	—	■	—	—	■	—	—	—	■
116.645.AB.4T	—	—	—	■	—	—	—	■	—	—	■
116.664.AB.1T	—	—	■	—	—	■	—	—	—	■	—
116.665.AB.1T	—	—	■	—	—	—	■	—	—	■	—
116.952.AB.1T	—	—	—	—	■	■	—	—	—	—	■
116.962.AB.1T	—	—	—	—	■	—	—	—	■	—	■



Traditional Spout

	Power Source					Mixer				Flow Rate	
	AC	DC	EBPS	LTPS	SSPS	None	Concealed	User Adjustable	External Thermostatic	0.35 GPM	0.5 GPM
116.101.AB.1T	■	—	—	—	—	■	—	—	—	—	■
116.101.AB.4T	■	—	—	—	—	■	—	—	—	■	—
116.111.AB.1T	■	—	—	—	—	—	■	—	—	—	■
116.111.AB.4T	■	—	—	—	—	—	■	—	—	■	—
116.201.AB.1T	—	■	—	—	—	■	—	—	—	—	■
116.201.AB.4T	—	■	—	—	—	■	—	—	—	■	—
116.211.AB.1T	—	■	—	—	—	—	■	—	—	—	■
116.211.AB.4T	—	■	—	—	—	—	■	—	—	■	—
116.598.AB.1T	—	—	—	■	—	■	—	—	—	—	■
116.598.AB.4T	—	—	—	■	—	■	—	—	—	■	—
116.619.AB.4T	—	—	—	■	—	—	■	—	—	■	—
116.644.AB.1T	—	—	—	■	—	—	■	—	—	—	■
116.644.AB.4T	—	—	—	■	—	—	■	—	—	■	—
116.931.AB.1T	—	—	—	—	■	—	■	—	—	—	—
116.951.AB.1T	—	—	—	—	■	—	—	—	■	—	—
116.961.AB.1T	—	—	—	—	■	—	—	—	■	—	■



Curve Spout

	Power Source					Mixer				Flow Rate	
	AC	DC	EBPS	LTPS	SSPS	None	Concealed	User Adjustable	External Mechanical	0.35 GPM	0.5 GPM
116.757.AB.1T	■	—	—	—	—	■	—	—	—	—	■
116.757.AB.4T	■	—	—	—	—	■	—	—	—	■	—
116.759.AB.4T	■	—	—	—	—	■	—	—	—	■	—
116.767.AB.1T	■	—	—	—	—	—	■	—	—	—	■
116.767.AB.4T	■	—	—	—	—	—	■	—	—	—	—
116.857.AB.1T	—	■	—	—	—	■	—	—	—	—	■
116.857.AB.4T	—	■	—	—	—	■	—	—	—	■	—
116.867.AB.1T	—	■	—	—	—	—	■	—	—	—	■
116.867.AB.4T	—	■	—	—	—	—	■	—	—	■	—
116.869.AB.4T	—	■	—	—	—	—	■	—	—	■	—
116.709.AB.1T	—	—	—	■	—	■	—	—	—	—	■
116.709.AB.4T	—	—	—	■	—	■	—	—	—	■	—
116.713.AB.1T	—	—	—	■	—	■	—	—	—	—	—
116.713.AB.4T	—	—	—	■	—	—	■	—	—	■	—
116.715.AB.4T	—	—	—	■	—	—	■	—	—	■	—
116.957.AB.1T	—	—	—	—	■	■	—	—	—	—	■
116.967.AB.1T	—	—	—	—	■	—	—	—	■	—	■



Edge Spout

	Power Source					Mixer				Flow Rate	
	AC	DC	EBPS	LTPS	SSPS	None	Concealed	User Adjustable	External Thermostatic	0.35 GPM	0.5 GPM
116.758.AB.1T	■	—	—	—	—	■	—	—	—	—	■
116.758.AB.4T	■	—	—	—	—	■	—	—	—	■	—
116.768.AB.1T	■	—	—	—	—	—	■	—	—	—	■
116.768.AB.4T	■	—	—	—	—	—	■	—	—	■	—
116.858.AB.1T	—	■	—	—	—	■	—	—	—	—	■
116.858.AB.4T	—	■	—	—	—	■	—	—	—	■	—
116.860.AB.4T	—	■	—	—	—	—	■	—	—	■	—
116.868.AB.1T	—	■	—	—	—	—	■	—	—	—	■
116.868.AB.4T	—	■	—	—	—	—	■	—	—	■	—
116.673.AB.1T	—	—	■	—	—	■	—	—	—	■	—
116.674.AB.1T	—	—	■	—	—	—	■	—	—	■	—
116.710.AB.1T	—	—	—	■	—	■	—	—	—	—	■
116.710.AB.4T	—	—	—	■	—	■	—	—	—	■	—
116.712.AB.4T	—	—	—	■	—	—	■	—	—	■	—
116.714.AB.1T	—	—	—	■	—	—	■	—	—	—	■
116.714.AB.4T	—	—	—	■	—	—	■	—	—	■	—
116.958.AB.1T	—	—	—	—	■	■	—	—	—	—	■
116.968.AB.1T	—	—	—	—	■	—	—	—	■	—	■



Gooseneck Spout, Deck-mount

	Power Source					Mixer				Flow Rate	
	AC	DC	EBPS	LTPS	SSPS	None	Concealed	User Adjustable	External	0.35 GPM	0.5 GPM
116.103.AB.1T	■	—	—	—	—	■	—	—	—	—	■
116.113.AB.1T	■	—	—	—	—	—	■	—	—	—	■
116.123.AB.1T	■	—	—	—	—	—	—	■	—	—	■
116.203.AB.1T	—	■	—	—	—	■	—	—	—	—	■
116.213.AB.1T	—	■	—	—	—	—	■	—	—	—	■
116.223.AB.1T	—	■	—	—	—	—	—	■	—	—	■
116.618.AB.1T	—	—	—	■	—	■	—	—	—	—	■
116.646.AB.1T	—	—	—	■	—	—	■	—	—	—	■
116.650.AB.1T	—	—	—	■	—	—	—	■	—	—	■
116.679.AB.1T	—	—	■	—	—	■	—	—	—	■	—
116.680.AB.1T	—	—	■	—	—	—	■	—	—	■	—
116.681.AB.1T	—	—	■	—	—	—	—	■	—	■	—
116.953.AB.1T	—	—	—	—	■	■	—	—	—	—	■
116.963.AB.1T*	—	—	—	—	■	—	—	—	■	—	■

*Mechanical Mixing Valve



Gooseneck Spout, Wall-mount

	Power Source					Mixer				Flow Rate	
	AC	DC	EBPS	LTPS	SSPS	None	Concealed	User Adjustable	External	0.35 GPM	0.5 GPM
116.104.AB.1T	■	—	—	—	—	■	—	—	—	—	■
116.114.AB.1T	■	—	—	—	—	—	■	—	—	—	■
116.124.AB.1T	■	—	—	—	—	—	—	■	—	—	■
116.204.AB.1T	—	■	—	—	—	■	—	—	—	—	■
116.214.AB.1T	—	■	—	—	—	—	■	—	—	—	■
116.224.AB.1T	—	■	—	—	—	—	—	■	—	—	■
116.619.AB.1T	—	—	—	■	—	■	—	—	—	—	■
116.647.AB.1T	—	—	—	■	—	—	■	—	—	—	■
116.651.AB.1T	—	—	—	■	—	—	—	■	—	—	■
116.688.AB.1T	—	—	■	—	—	■	—	—	—	■	—
116.689.AB.1T	—	—	■	—	—	—	■	—	—	■	—
116.690.AB.1T	—	—	■	—	—	—	—	■	—	■	—
116.954.AB.1T	—	—	—	—	■	■	—	—	—	—	■
116.964.AB.1T*	—	—	—	—	■	—	—	—	■	—	■

*Mechanical Mixing Valve

HyTronic® With TempShield® Scald Protection



TempShield®
Integrated ASSE 1070
Certified Scald Protection

A new solution for safe, touchless convenience.

Proven dependability and integrated **ASSE 1070 Certified Scald Protection** helps make HyTronic® touchless faucets the very best solution for safety and hygiene. Above-deck components and the CF Connect App combine for easy adjustment and maintenance.

Benchmark for Durability

Heavy duty cast brass construction with a refined polished chrome finish.



Easy to Service

All components are above-deck for easy access and routine maintenance without shutting off water.

Best Sensor In the Industry

Twin-beam infrared system responds quickly, adjusts to environmental changes, and minimizes false activations.

User Adjustable

Available with user **adjustable temperature control** for improved user experience.



Easy to Adjust

The CF Connect App provides a secure and easy way to adjust and maintain the faucet with a smartphone.

- Hygiene Flush eliminates stagnant water from the plumbing system and removes harmful bacteria
- Six field-adjustable modes for metering, water savings, and detection ranges
- Track Usage

Integrated ASSE 1070 Certified Scald Protection



Built-in scald protection means:

- Faster installation and lower labor costs
- Fewer potential leak points
- Safer installation, every time

Pick a style to match your application.

We offer a choice of three distinct spout styles, including our popular gooseneck spout, to meet your needs.



Choice of advanced power options.

Also available in AC Plug-In or Hard-Wire and DC Lithium CRP2 Battery.



Maintenance-free power for 15 years or more.



Integrated backup power system for AC faucets.

HyTronic® With TempShield® Scald Protection

How to read the HyTronic® With TempShield® model number

Position	1	2	3		4	5	Finish
H -	XX	1	X	-	X	X	ABCPT

Model number example: H-T11H-15ABCPT

This is a HyTronic® (H) with a traditional spout (T1), single hole mount (1), 0.5 GPM laminar outlet (H), battery power (1), with a user-adjustable mix (5), lead-free (AB), polished chrome finish (CP), and CF Connect compatible (T).

Model Number Reference Chart

Position	Feature	Code	Description
1	Spout Design	C3	Contemporary Spout
		T1	Traditional Spout
		G1	GN2 Gooseneck Spout
		G6	GN6 Gooseneck Spout
2	Mounting	1	Single Hole Mounting
3	Flow Control	H	0.5 GPM Laminar Flow Outlet
		K	1.5 GPM Internal Flow Control

Position	Feature	Code	Description
4	Power Source	1	Battery (DC) Power
		4	AC Power Less Transformer
		6	Long Term Power System (LTPS)
		7	Emergency Backup Power Supply (EBPS)
5	Mixing	3	Internal Mixer
		5	User Adjustable Mixer

HyTronic® With TempShield® – Contemporary



	Power Source				Mixer		Flow Rate	
	AC	DC	LTPS	EBPS	Concealed	User Adjustable	0.5 GPM Non-Aerating Laminar Spray Outlet	1.5 GPM Flow Control with Plain Spout End
H-C31H-43ABCPT	■	—	—	—	■	—	■	—
H-C31H-45ABCPT	■	—	—	—	—	■	■	—
H-C31H-13ABCPT	—	■	—	—	■	—	■	—
H-C31H-15ABCPT	—	■	—	—	—	■	■	—
H-C31H-63ABCPT	—	—	■	—	■	—	■	—
H-C31H-65ABCPT	—	—	■	—	—	■	■	—

HyTronic® With TempShield® – Traditional



	Power Source				Mixer		Flow Rate	
	AC	DC	LTPS	EBPS	Concealed	User Adjustable	0.5 GPM Non-Aerating Laminar Spray Outlet	1.5 GPM Flow Control with Plain Spout End
H-T11H-43ABCPT	■	—	—	—	■	—	■	—
H-T11H-45ABCPT	■	—	—	—	—	■	■	—
H-T11H-13ABCPT	—	■	—	—	■	—	■	—
H-T11H-15ABCPT	—	■	—	—	—	■	■	—
H-T11H-63ABCPT	—	—	■	—	■	—	■	—
H-T11H-65ABCPT	—	—	■	—	—	■	■	—



HyTronic® With TempShield® – Gooseneck, 5-1/4" C-C

	Power Source				Mixer		Flow Rate	
	AC	DC	LTPS	EBPS	Concealed	User Adjustable	0.5 GPM Non-Aerating Laminar Spray Outlet	1.5 GPM Flow Control with Plain Spout End
H-G11H-43ABCPT	■	—	—	—	■	—	■	—
H-G11H-45ABCPT	■	—	—	—	—	■	■	—
H-G11K-43ABCPT	■	—	—	—	■	—	—	■
H-G11K-45ABCPT	■	—	—	—	—	■	—	■
H-G11H-13ABCPT	—	■	—	—	■	—	■	—
H-G11H-15ABCPT	—	■	—	—	—	■	■	—
H-G11K-13ABCPT	—	■	—	—	■	—	—	■
H-G11K-15ABCPT	—	■	—	—	—	■	—	■
H-G11H-63ABCPT	—	—	■	—	■	—	■	—
H-G11H-65ABCPT	—	—	■	—	—	■	■	—
H-G11K-63ABCPT	—	—	■	—	■	—	—	■
H-G11K-65ABCPT	—	—	■	—	—	■	—	■



The Facilities Guidelines Institute recommends a spout reach of at least 6" for handwashing stations.

These faucets meet the new FGI recommendation and are ideal for medical, patient, and surgical areas.



HyTronic® With TempShield® – Gooseneck, 6" C-C

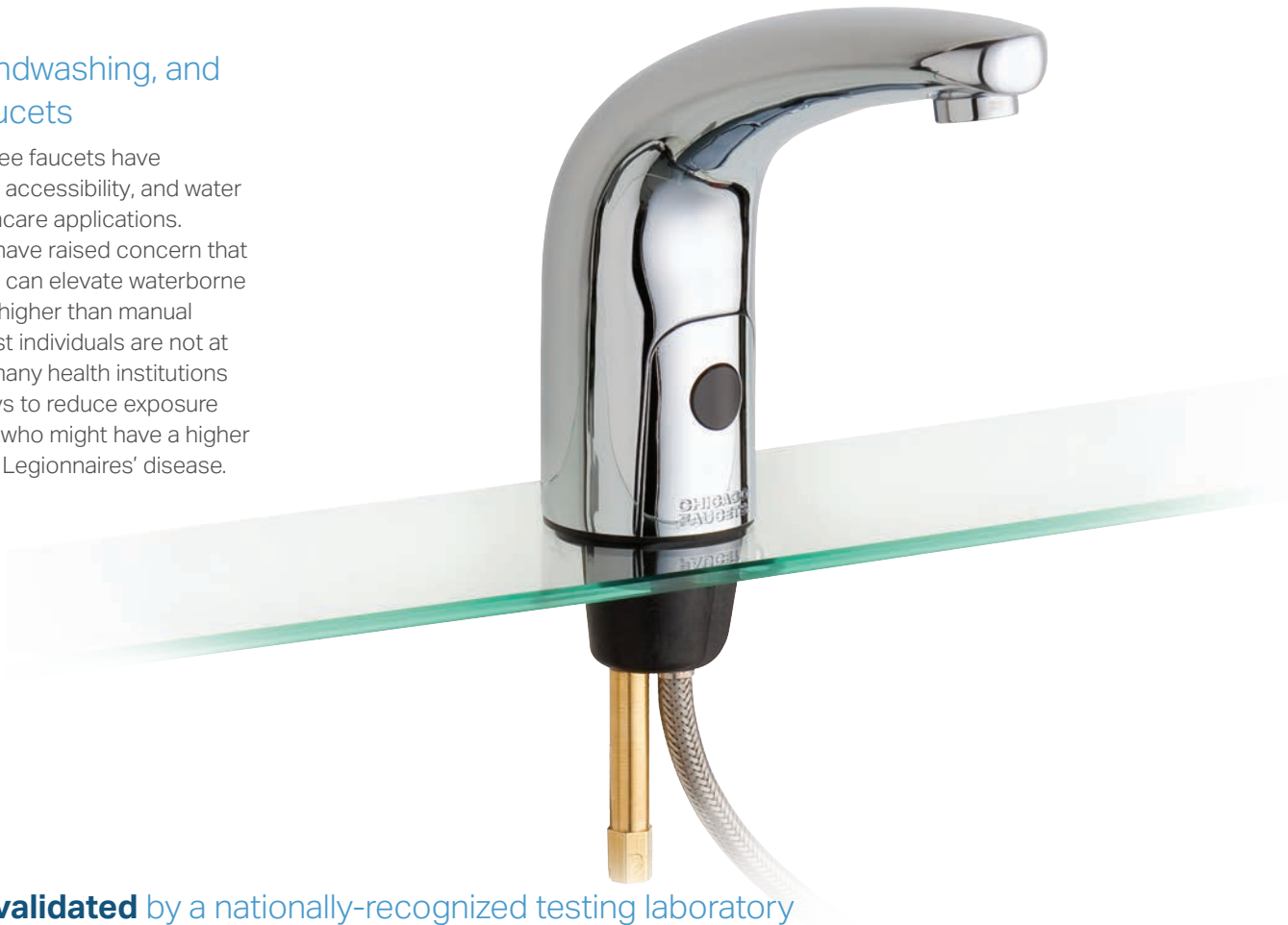
	Power Source				Mixer		Flow Rate	
	AC	DC	LTPS	EBPS	Concealed	User Adjustable	0.5 GPM Non-Aerating Laminar Spray Outlet	1.5 GPM Flow Control with Plain Spout End
H-G61K-43ABCPT	■	—	—	—	■	—	—	■
H-G61K-45ABCPT	■	—	—	—	—	■	—	■
H-G61K-13ABCPT	—	■	—	—	■	—	—	■
H-G61K-15ABCPT	—	■	—	—	—	■	—	■
H-G61K-63ABCPT	—	—	■	—	■	—	—	■
H-G61K-65ABCPT	—	—	■	—	—	■	—	■
H-G61K-75ABCPT	■	—	—	■	—	■	—	■

A New Option for touchless faucets in patient care applications.

HyTronic® Patient Care is a line of faucets designed specifically for patient care applications. HyTronic® Patient Care faucets offer touch-free, dual beam design that provides quick response time and the added safety of improved hygiene. Most of all, they limit the tested microbial contamination to a level statistically similar to standards set by a conventional manual faucet.

Hygiene, handwashing, and touchless faucets

For years, touch free faucets have improved hygiene, accessibility, and water efficiency in healthcare applications. However, studies have raised concern that touch free faucets can elevate waterborne bacteria to a level higher than manual faucets. While most individuals are not at risk for infection, many health institutions are looking for ways to reduce exposure among individuals who might have a higher risk of contracting Legionnaires' disease.



Tested and validated by a nationally-recognized testing laboratory

HyTronic® Patient Care faucets were extensively tested for heterotrophic plate count (HPC) and Legionella bacteria. We utilized the test facilities at the University of Pittsburgh with culture and sample analysis performed by Special Pathogens Laboratory. SPL is a nationally-recognized analytical microbiology laboratory that specializes in the detection, control, and remediation of waterborne pathogens such as Legionella.



Options Designed for a **Safer** and **Easier** Experience.

EBPS

Integrated backup power system for AC faucets.

LTPS

Maintenance-free power for 15 years or more.



HyTronic® Patient Care Traditional

	Power Source					Mixer				Flow Rate	
	AC	DC	EBPS	LTPS	SSPS	None	Concealed	User Adjustable	External Mechanical	1.5 GPM	2.2 GPM
116.615.AB.1T	■	—	—	—	—	■	—	—	—	■	—
116.593.AB.1T	■	—	—	—	—	—	—	—	■	■	—
116.590.AB.1T	—	■	—	—	—	■	—	—	—	—	■
116.614.AB.1T	—	■	—	—	—	—	■	—	—	■	—
116.592.AB.1T	—	■	—	—	—	—	—	■	—	■	—
116.695.AB.1T	—	—	—	■	—	■	—	—	—	—	■
116.728.AB.1T	—	—	—	■	—	—	■	—	—	■	—
116.696.AB.1T	—	—	—	■	—	—	—	■	—	■	—
116.607.AB.1T	—	—	■	—	—	■	—	—	—	—	■
116.946.AB.1T	—	—	■	—	—	—	■	—	—	■	—
116.608.AB.1T	—	—	■	—	—	—	—	■	—	■	—



HyTronic® Patient Care Traditional with Temperature Adjustment Side Mixer

	Power Source					Mixer				Flow Rate	
	AC	DC	EBPS	LTPS	SSPS	None	Concealed	User Adjustable	External Mechanical	1.5 GPM	2.2 GPM
116.836.AB.1T	■	—	—	—	—	■	—	—	—	—	■
116.831.AB.1T	—	—	—	■	—	■	—	—	—	—	■
116.837.AB.1T	—	—	■	—	—	■	—	—	—	—	■



HyTronic® Patient Care Edge

	Power Source					Mixer				Flow Rate	
	AC	DC	EBPS	LTPS	SSPS	None	Concealed	User Adjustable	External Mechanical	1.5 GPM	2.2 GPM
116.848.AB.1T	■	—	—	—	—	—	■	—	—	■	—
116.818.AB.1T	■	—	—	—	—	—	—	■	—	■	—
116.844.AB.1T	—	■	—	—	—	—	■	—	—	■	—
116.846.AB.1T	—	■	—	—	—	—	—	■	—	■	—
116.845.AB.1T	—	—	—	■	—	—	■	—	—	■	—
116.847.AB.1T	—	—	—	■	—	—	—	■	—	■	—
116.849.AB.1T	—	—	■	—	—	—	■	—	—	■	—
116.819.AB.1T	—	—	■	—	—	—	—	■	—	■	—



HyTronic® Patient Care Gooseneck, Deck-mount

	Power Source					Mixer				Flow Rate	
	AC	DC	EBPS	LTPS	SSPS	None	Concealed	User Adjustable	External Mechanical	2.2 GPM	2.5 GPM
116.595.AB.1T	■	—	—	—	—	■	—	—	—	■	—
116.616.AB.1T	■	—	—	—	—	—	■	—	—	—	■
116.597.AB.1T	■	—	—	—	—	—	—	■	—	—	■
116.594.AB.1T	—	■	—	—	—	■	—	—	—	■	—
116.617.AB.1T	—	■	—	—	—	—	■	—	—	—	■
116.596.AB.1T	—	■	—	—	—	—	—	■	—	—	■
116.697.AB.1T	—	—	—	■	—	■	—	—	—	■	—
116.609.AB.1T	—	—	■	—	—	—	—	—	—	■	—
116.936.AB.1T	—	—	■	—	—	—	—	—	—	—	■
116.610.AB.1T	—	—	■	—	—	—	—	—	—	—	■

- Includes faucet, thermostatic mixer, and two angle stops
- System is tested to limit microbial contamination
- Available with Long Term Power System designed to last more than 15 years, depending on usage
- Thermostatic Mixing Valve (TMV) available with integrated pipe flush for high temperature thermal flush treatments, additional mixer options available
- Angle stops with integrated checks to prevent cross-flow, kits without stops available



HyTronic® Patient Care Kits

	Power Source					Mixer				Flow Rate	
	AC	DC	EBPS	LTPS	SSPS	None	Concealed	User Adjustable	External Mechanical	2.2 GPM	2.5 GPM
116.896.AB.1T	■	—	—	—	—	—	■	—	—	■	—
116.871.AB.1T*	■	—	—	—	—	—	■	—	—	■	—
116.898.AB.1T	■	—	—	—	—	—	—	■	—	■	—
116.873.AB.1T*	■	—	—	—	—	—	—	■	—	■	—
116.797.AB.1T	—	—	—	■	—	—	■	—	—	■	—
116.807.AB.1T*	—	—	—	■	—	—	■	—	—	■	—
116.799.AB.1T	—	—	—	■	—	—	—	■	—	■	—
116.809.AB.1T*	—	—	—	■	—	—	—	■	—	■	—

*Thermal Flush

LTPS

Power that lasts (and lasts).

The Long Term Power System (LTPS) is the perfect solution for any standard commercial application. LTPS is designed to provide maintenance-free power for more than 15 years under normal use. No additional wiring, no need for an electrician, and no periodic battery replacement. Just plug the power pack into the faucet, and enjoy years of maintenance-free operation.



ELR Series

Touchless Ligature Resistant† Faucets.

The ELR Series is designed for behavioral care and healthcare facilities where ligature points are a concern. The ELR combines the added safety of ligature resistance and touch-free operation with the durability of a heavy-duty, one-piece cast brass body. Power options and mixing – including integrated scald protection – are concealed in a secure, compact control box.

Ligature resistant†

Rounded and sloped design to minimize ligature points.

The **CF Connect** App provides a secure and easy way to adjust and maintain the faucet with a smartphone.

- Hygiene Flush eliminates stagnant water from the plumbing system and removes harmful bacteria
- Six field-adjustable modes for metering, water savings, and detection ranges
- Track Usage



Durable construction

Heavy-duty, one-piece brass body with vandal resistant outlet to withstand abuse and tampering.

ASSE 1070 certified scald protection

Available with integral ASSE 1070 certified protection.

Secure, compact control box for any application

Conceals and secures power, solenoid, mixing valve, and supply in a compact box.



ELR

	Power Source					Mixer		Flow Rate	
	AC	DC	EBPS	LTPS	SSPS	None	Concealed	0.5 GPM	1.0 GPM
ELR-E12A-41ABCPT	■	—	—	—	—	■	—	■	—
ELR-E12E-41ABCPT	■	—	—	—	—	■	—	—	■
ELR-E12A-42ABCPT*	■	—	—	—	—	—	■	■	—
ELR-E12E-42ABCPT*	■	—	—	—	—	—	■	—	■
ELR-E12A-43ABCPT**	■	—	—	—	—	—	■	■	—
ELR-E12E-43ABCPT**	■	—	—	—	—	—	■	—	■
ELR-E12A-11ABCPT	—	■	—	—	—	■	—	■	—
ELR-E12E-11ABCPT	—	■	—	—	—	■	—	—	■
ELR-E12A-12ABCPT*	—	■	—	—	—	—	■	■	—
ELR-E12E-12ABCPT*	—	■	—	—	—	—	■	—	■
ELR-E12A-13ABCPT**	—	■	—	—	—	—	■	■	—
ELR-E12E-13ABCPT**	—	■	—	—	—	—	■	—	■
ELR-E12A-61ABCPT	—	—	—	■	—	■	—	■	—
ELR-E12E-61ABCPT	—	—	—	■	—	■	—	—	■
ELR-E12A-62ABCPT	—	—	—	■	—	—	■	■	—
ELR-E12E-62ABCPT	—	—	—	■	—	—	■	—	■
ELR-E12A-63ABCPT	—	—	—	■	—	—	■	■	—
ELR-E12E-63ABCPT	—	—	—	■	—	—	■	—	■

*Mechanical Mixing Valve

**Thermostatic Mixing Valve

†DISCLAIMER

This product, when installed in accordance with the Installation Instructions, is designed to decrease the probability that it may be utilized as an apparatus for ligature. Chicago Faucets does not represent or warrant that this product is able to prevent death or injury, or resist all ligature attachment, and this product is not a substitute for the proper evaluation, treatment and supervision of persons at risk of suicide. Chicago Faucets makes no express or implied warranties regarding the ability of the product to prevent death or injury or resist all ligature attachment.

Alpina® Series

Touchless and Timeless Faucets.

Our new touch-free faucets were designed by London-based Christoph Behling Design. The slim, timeless, and elegant form combined with durable, solid brass construction makes them ideal for public buildings such as airports, retail, offices, or restaurants. Available for deck-mounted installations.



New Integral Scald Protection

All Alpina® dual supply models now feature integral ASSE 1070 compliant thermostatic protection for added safety.

New and Innovative Power Options

In addition to AC and DC, we now offer LTPS and SSPS power systems with Alpina® faucets. Both deliver easy installation and maintenance-free performance.

Durable Construction

Heavy-duty, one-piece cast brass body with vandal resistant outlet is designed to withstand abuse and tampering.



Avisio®

	Power Source					Mixer		Flow Rate
	AC	DC	EBPS	LTPS	SSPS	None	Concealed	0.5 GPM
AEQ-P11A-31ABCPT	■	—	—	—	—	■	—	■
AEQ-P11A-33ABCPT	■	—	—	—	—	—	■	■
AEQ-P11A-11ABCPT	—	■	—	—	—	■	—	■
AEQ-P11A-13ABCPT	—	■	—	—	—	—	■	■
AEQ-P11A-61ABCPT	—	—	—	■	—	■	—	■
AEQ-P11A-63ABCPT	—	—	—	■	—	—	■	■
AEQ-P11A-21ABCPT	—	—	—	—	■	■	—	■
AEQ-P11A-23ABCPT	—	—	—	—	■	—	■	■



Alento

	Power Source					Mixer		Flow Rate
	AC	DC	EBPS	LTPS	SSPS	None	Concealed	0.5 GPM
AEQ-B11A-31ABCPT	■	—	—	—	—	■	—	■
AEQ-B11A-33ABCPT	■	—	—	—	—	—	■	■
AEQ-B11A-11ABCPT	—	■	—	—	—	■	—	■
AEQ-B11A-13ABCPT	—	■	—	—	—	—	■	■
AEQ-B11A-61ABCPT	—	—	—	■	—	■	—	■
AEQ-B11A-63ABCPT	—	—	—	■	—	—	■	■
AEQ-B11A-21ABCPT	—	—	—	—	■	■	—	■
AEQ-B11A-23ABCPT	—	—	—	—	■	—	■	■

Note: Models with Bluetooth communication available early 2024. To order a standard model prior to 2024, order the same model number without the "T" at the end.

Accessories

Transformers

Plug-in or hard-wire transformers available.

EQ, ELR, EVR Series

Description	Model Number
Plug-in, Multi-use Transformer	EQ-003JKNF
Hard-wire, Multi-use Transformer	EQ-005JKNF



HyTronic Series

Description	Model Number
Plug-in, Single-unit Transformer	240.630.00.1
Hard-wire, Single or Multi-unit Transformer	243.259.00.1
Hard-wire, Single or Multi-unit Transformer	243.260.00.1
Bank Installation Adapter Wire	242.340.00.1

Cover Plates

For use on existing 4" and 8" center sinks

EQ Series

Description	Model Number
4" Cover Plate for Curve and High Arc	EQ-A12-KJKCP
8" Cover Plate for Curve and High Arc	EQ-A13-KJKCP



HyTronic Series

Description	Model Number
4" Cover Plate	240.627.21.1
8" Cover Plate	240.628.21.1

E-Tronic 80 Series

Description	Model Number
4" Cover Plate	3500-001KJKCP
8" Cover Plate	3500-002KJKCP

ELR Series

Description	Model Number
8" Cover Plate	ELR-E13-KJKCP

Add-On Thermostatic Mixing Valves

These valves can be used to make any manual or electronic faucet ASSE 1070 compliant. Mixing valves with a thermal flush option allow hot water disinfection of the entire system without the need for bypass piping.



Description	Model Number
Thermostatic valve, 3-port for single supply	122-ABNF
Concealed mechanical mixing valve for single faucet installations	242.165.AB.1
Thermostatic mixing valve, 3-port for single supply	131-ABNF
Thermostatic mixing valve, 4-port for single supply	131-CABNF
Thermostatic valve with integrated thermal flush option, 3-port for single supply	131-FMAB
Thermostatic valve with integrated thermal flush option, 4-port for single supply	131-CFMAB

Accessories

Description	Model Number
Bank installation adapter wire for HyTronic® and E-Tronic® Series faucets	242.340.00.1
Electronic, Inlet Copper Tube Supply	240.632.00.1
Braided Hose Kit for Electronic Faucets	245.536.00.1

Look for these symbols to download the CF Connect and EQ Connect Apps:



The Smart Choice For Touchless Faucet Solutions.

We can help take the hassle out of selecting the right products for your project. To learn more about the options available, visit our website or contact us directly to discuss your requirements today.

Call: 847/803-5000

Write: customerservice.us@chicagofaucets.com

Visit: chicagofaucets.com/support/where-to-buy to find your Sales Representative or a Chicago Faucets plumbing distributor near you.



**CHICAGO
FAUCETS**
Geberit Group

Chicago Faucets, a member of the Geberit Group, is the leading brand of commercial faucets and fittings in the United States, offering a complete range of products for schools, laboratories, hospitals, office buildings, food service, airports, and sports facilities. Whatever your requirements may be, Chicago Faucets offers standard and made-to-order products that are designed to meet any commercial application.

© 2025 The Chicago Faucet Company. Product specifications subject to change without notice.

CF1074 03/25

2100 South Clearwater Drive, Des Plaines, IL 60018

Phone: 847/803-5000 | Fax: 847/803-5454 | Technical: 800/832-8783 | www.chicagofaucets.com

