

# Repair Parts

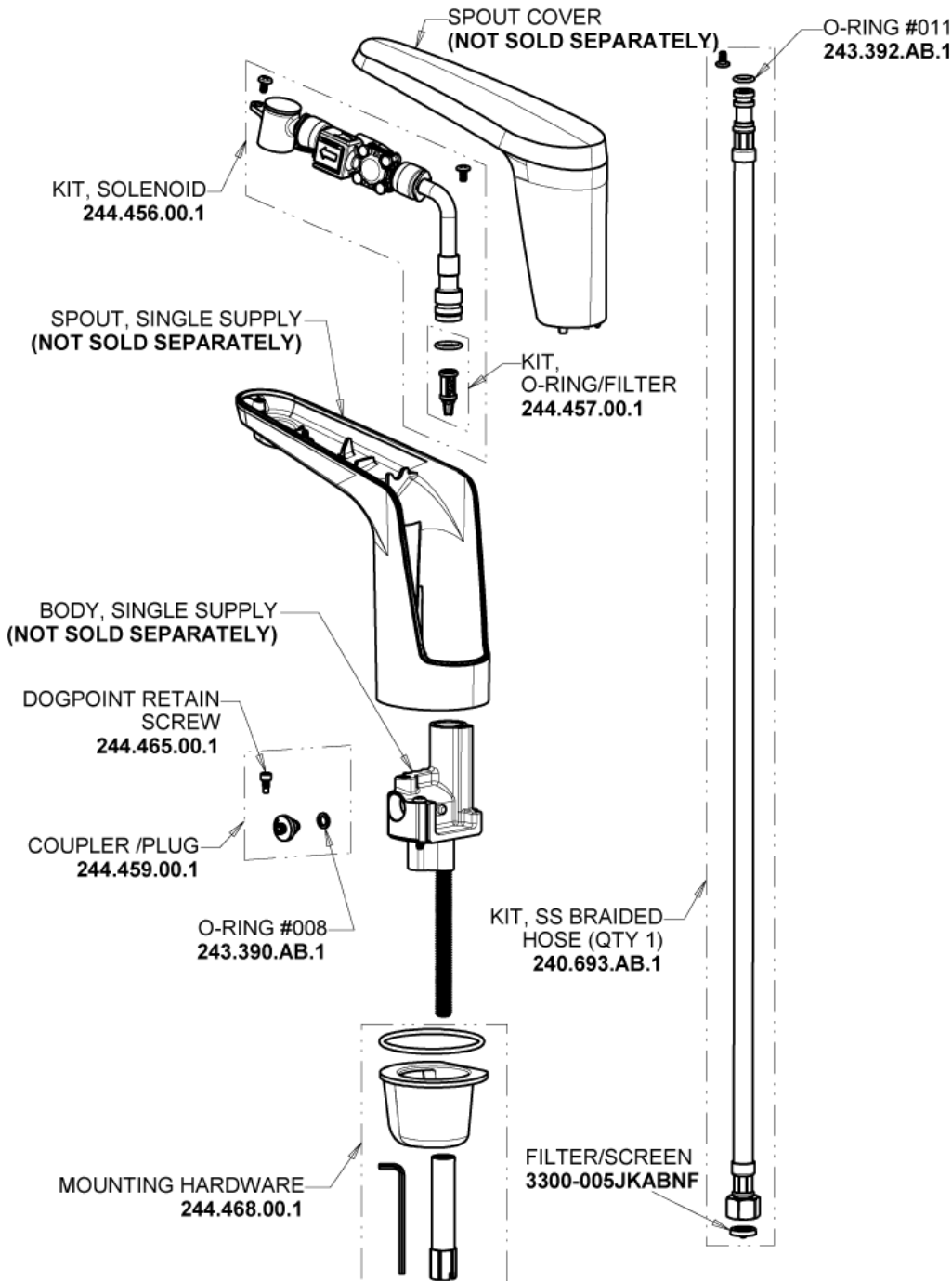
E80-A11D-11ABMB

Advanced electronic commercial faucet with touchless sensor operation

# CHICAGO FAUCETS®

Geberit Group

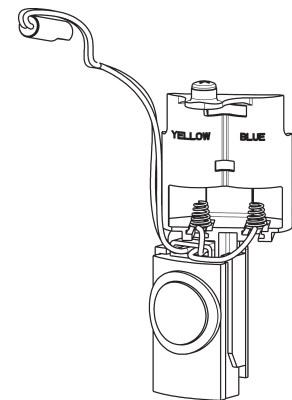
## Base Parts:



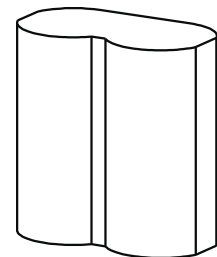
0.35 GPM (1.3 L/min) Pressure Compensating Econo-Flo™, Non-aerating Spray Outlet  
**243.698.AB.1**



Electronic Module  
**244.458.00.1**



CR-P2 6V Lithium Battery  
**242.560.00.1**



## For Technical Assistance:

Phone: 800-TEC-TRUE (832-8783)

Email: [techsupport.us@chicagofaucets.com](mailto:techsupport.us@chicagofaucets.com)

2100 South Clearwater Drive

Des Plaines, IL 60018

Phone: 847-803-5000

[chicagofaucets.com](http://chicagofaucets.com)