

CHICAGO FAUCETS 

a Geberit company

2100 South Clearwater Drive
Des Plaines, IL 60018
Phone: 847-803-5000
Fax: 847-803-5454
www.chicagofaucets.com

FOR TECHNICAL ASSISTANCE
1-800-TEC-TRUE (1-800-832-8783)

REPAIR PARTS

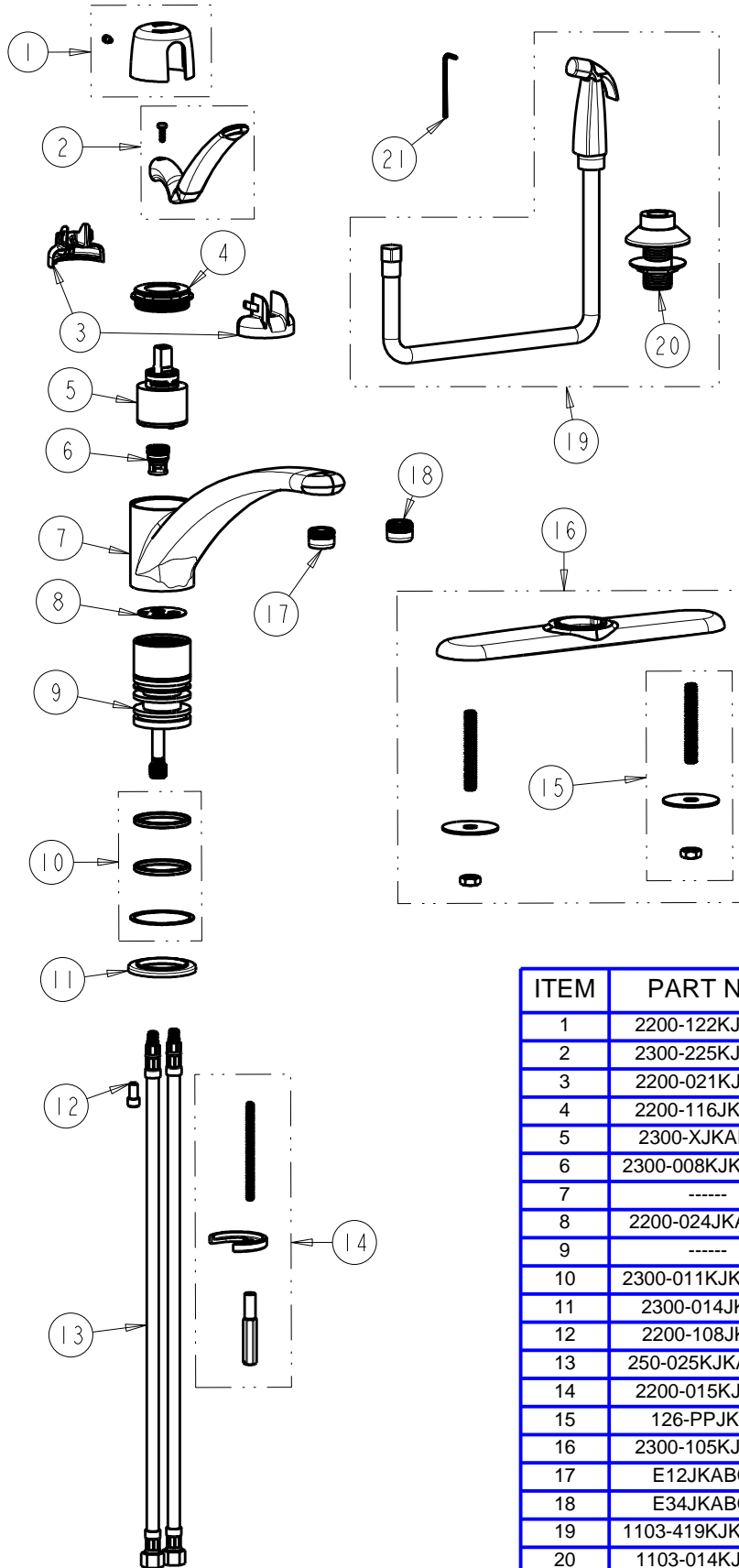
BY: JAR DATE: 10-31-13
CHK: *JAR* REV: 12-7-18

FITTING NO.

2301-SERIES

SUBMITTED MODEL NO.

ITEM NO.



ITEM	PART NO.	DESCRIPTION
1	2200-122KJKCP	CAP AND SCREW ASSEMBLY
2	2300-225KJKCP	LEVER HANDLE, 4-5/8"
3	2200-021KJKNF	CARTRIDGE SPIN CAP ASSEMBLY
4	2200-116JKRCF	NUT, HOLDDOWN
5	2300-XJKABNF	40 mm SINGLE LEVER CARTRIDGE
6	2300-008KJKABNF	DIVERTER ASSEMBLY
7	-----	SPOUT
8	2200-024JKABNF	GASKET, 40MM CARTRIDGE
9	-----	BODY,HUB,KITCHEN W/SPRAY
10	2300-011KJKABNF	QUAD RINGS & SLIP WASHER
11	2300-014JKCP	FLANGE, BODY
12	2200-108JKNF	SCREW, 1/4-20 X 1/2 UNRC 2A, 18-8 SS
13	250-025KJKABNF	HOSE, SS BRAIDED 5/16-24 X 3/8
14	2200-015KJKNF	NUT, MOUNTING ASSEMBLY
15	126-PPJKNF	PRE-PACK, MOUNTING HARDWARE
16	2300-105JKCP	8" COVER PLATE W/STUD MOUNT
17	E12JKABCP	OUTLET, AERATOR 2.2 GPM
18	E34JKABCP	OUTLET, AERATOR 1.5 GPM
19	1103-419KJKABNF	SPRAY HOSE & FLANGE (BLACK)
20	1103-014KJKNF	FLANGE ASSEMBLY (BLACK)
21	665-505JKNF	3/32" HEX KEY