



2100 SOUTH CLEARWATER DRIVE
DES PLAINES, ILLINOIS 60018-5999

FITTING NO.

E22

SUBMITTED MODEL NO.

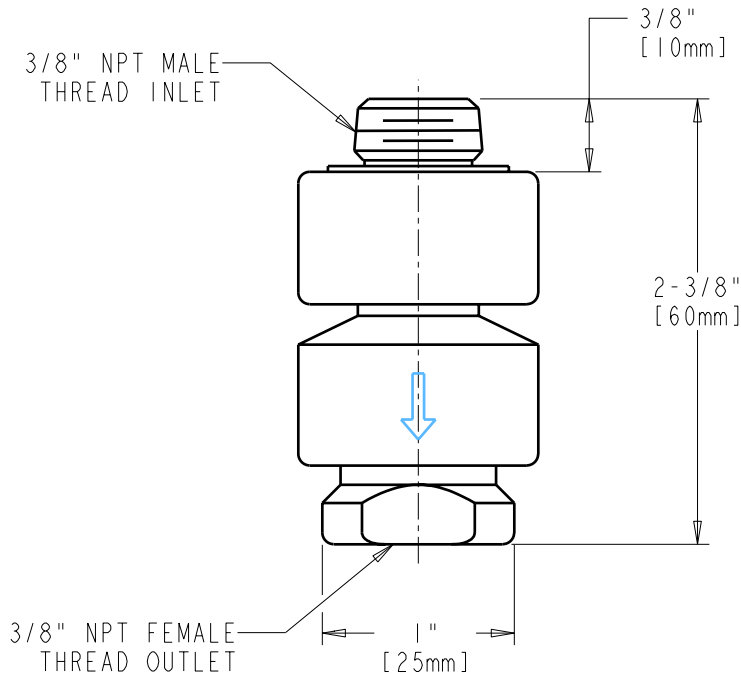
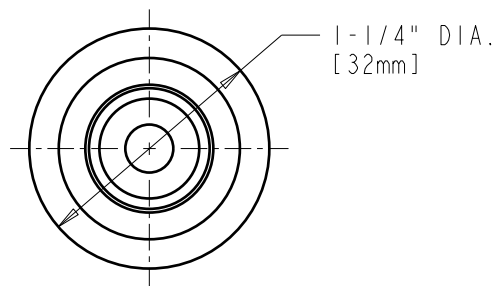
JOB NAME

ITEM NO.

SUBMITTED AS SHOWN

SUBMITTED AS NOTED

SEE ATTACHED FOR
SUBMITTED MODIFICATION



ROUGHING IN DIMENSIONS MAY VARY AND ARE SUBJECT TO CHANGE. NO RESPONSIBILITY IS ASSUMED FOR USE OF SUPERCEDED OR VOIDED DATA.

TECHNICAL DATA

- IN LINE VACUUM BREAKER
- FITS SPOUTS WITH GROUP "B" OUTLETS
- 150 PSI [10.3 bars] MAXIMUM WORKING PRESSURE
- 140°F [60°C] MAXIMUM TEMPERATURE
- NOT DESIGNED FOR CONTINUOUS PRESSURE APPLICATIONS
- FINISH: CHROME PLATE
- ANSI/ASSE STANDARD 1035 COMPLIANT
- CSA B64.8 COMPLIANT
- UPC COMPLIANT

DATE: 08-28-96

BY: JAR

ECN:

APP'D: *JAR*

REV: 02-15-07

E22