

CHICAGO FAUCETS 

a Geberit company

FOR TECHNICAL ASSISTANCE
1-800-TEC-TRUE (1-800-832-8783)

2100 South Clearwater Drive
Des Plaines, IL 60018
Phone: 847-803-5000
Fax: 847-803-5454
www.chicagofaucets.com

REPAIR PARTS

BY: SID DATE: 11-07-11

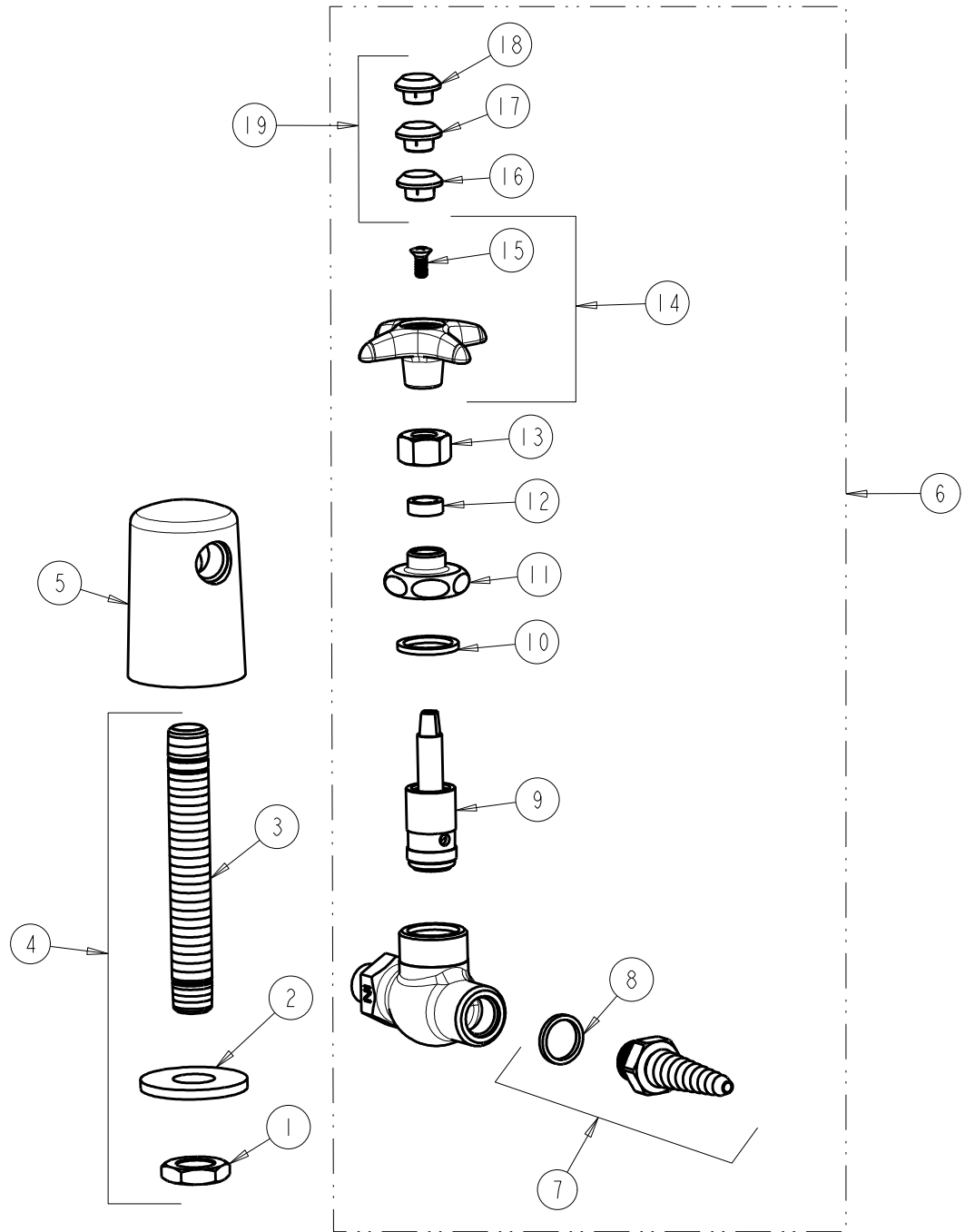
CHK: *[Signature]* REV:

FITTING NO.

980-937CH957-3KAGVCP

SUBMITTED MODEL NO.

ITEM NO.



ITEM	PART NO.	DESCRIPTION	ITEM	PART NO.	DESCRIPTION
1	705-008JKRBF	NUT	11	937-018JKRCF	CAP NUT
2	705-010JKNF	STEEL WASHER	12	244-217JKNF	PACKING
3	957-003JKRBF	MALE THREAD SHANK	13	937-010JKCP	NUT
4	957-003KJKRBF	SHANK ASSEMBLY 3/8 X 4-3/4	14	204-LESS216-28JKCP	HANDLE ASSEMBLY
5	980-CP	TURRET (1 OUTLET)	15	420-010JKRCF	SCREW, 10-32 UNC PH 1/2
6	937-CHAGVCP	VALVE BODY	16	216-278JKNF	BUTTON 'AIR'
7	E7JKCP	SERRATED HOSE NOZZLE	17	216-328JKNF	BUTTON 'GAS'
8	229-003JKNF	WASHER	18	216-378JKNF	BUTTON 'VAC'
9	962-XJKNF	NEEDLE VALVE UNIT	19	216-PPJKNF	PRE-PACK (AIR, GAS, VAC)
10	1-043JKNF	GASKET, CAP 1 X .80 X .09			