

**CHICAGO FAUCETS**  
a Geberit company

2100 South Clearwater Drive  
Des Plaines, IL 60018  
Phone: 847-803-5000  
Fax: 847-803-5454  
www.chicagofaucets.com

**REPAIR PARTS**

FITTING NO.

**956-R853CP**

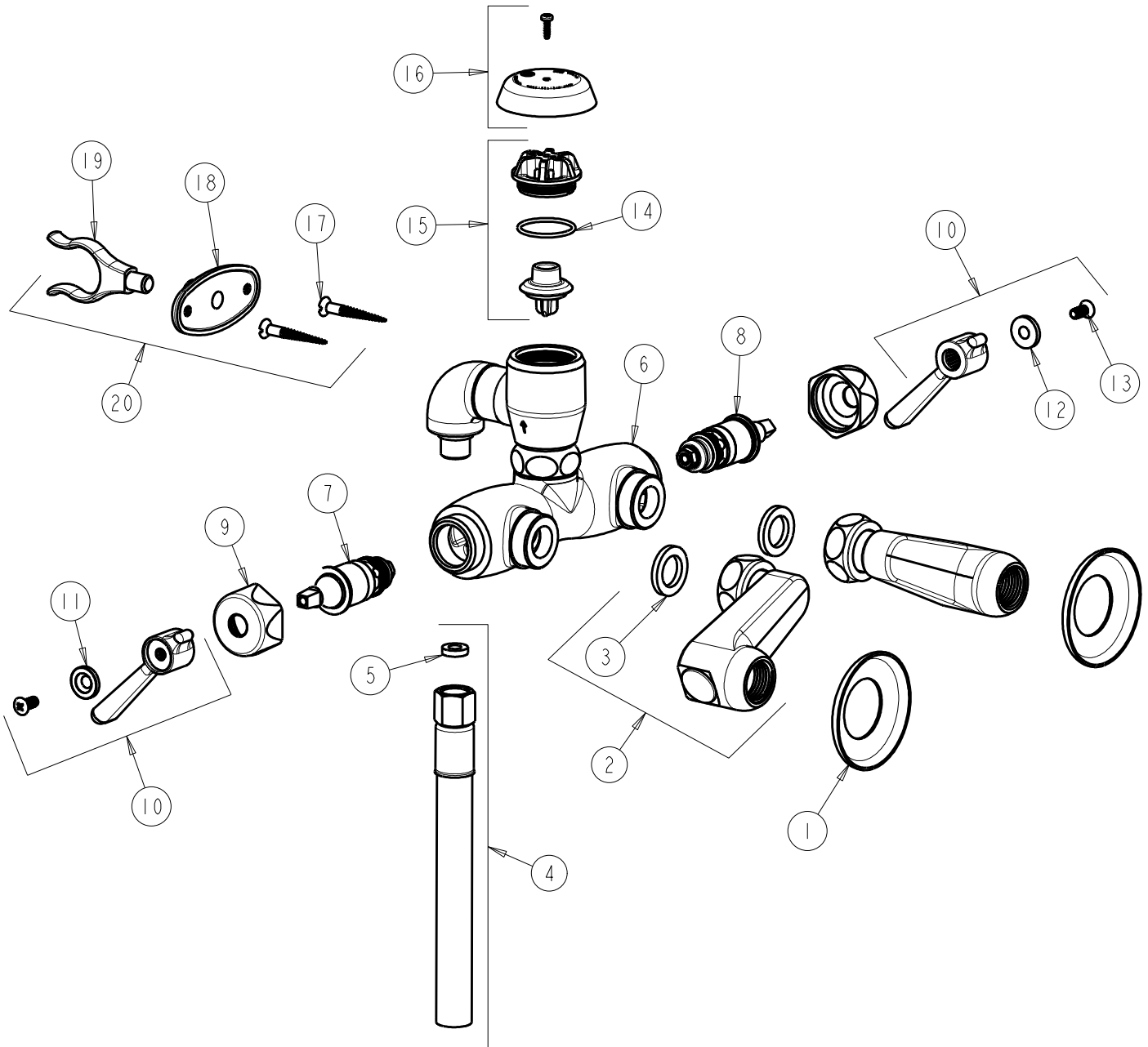
SUBMITTED MODEL NO.

ITEM NO.

**FOR TECHNICAL ASSISTANCE**  
**1-800-TEC-TRUE (1-800-832-8783)**

BY: SID DATE: 11-01-11

CHK: *[Signature]* REV:



| ITEM | PART NO.     | DESCRIPTION                       | ITEM | PART NO.     | DESCRIPTION                  |
|------|--------------|-----------------------------------|------|--------------|------------------------------|
| 1    | 1-055JKCP    | FLANGE                            | 11   | 633-123JKNF  | INDEX BUTTON (BLUE)          |
| 2    | RJKABCP      | SUPPLY ARM WITH BUILT-IN SHUT-OFF | 12   | 633-023JKNF  | INDEX BUTTON (RED)           |
| 3    | 1-011JKNF    | WASHER, .97 X .62 X .12           | 13   | 420-010JKRCF | SCREW, 10-32 UNC PH 1/2      |
| 4    | 252-011KJKNF | HOSE ASSEMBLY 5'                  | 14   | 80-007JKNF   | O RING 0.989 X .070          |
| 5    | 739-051JKNF  | GASKET, 1/2 X 1/4 X 1/8           | 15   | 892-302KJKNF | VACUUM BREAKER REPAIR KIT    |
| 6    | -----        | VALVE BODY (NOT SOLD SEPARATELY)  | 16   | 892-254JKCP  | VACUUM BREAKER COVER w/SCREW |
| 7    | 1-099XTJKNF  | QUATURN CARTRIDGE (RH)            | 17   | 173-006JKCP  | FLAT HEAD WOOD SCREW (1)     |
| 8    | 1-100XTJKNF  | QUATURN CARTRIDGE (LH)            | 18   | 173-109JKCP  | FLANGE                       |
| 9    | 444-005JKCP  | CAP                               | 19   | 853-001JKCP  | FORK                         |
| 10   | 369-PRJKCP   | LEVER HANDLE ASSEMBLY (PAIR)      | 20   | 853-CP       | WALL HOOK ASSEMBLY           |