

**CHICAGO FAUCETS**  
a Geberit company

2100 South Clearwater Drive  
Des Plaines, IL 60018  
Phone: 847-803-5000  
Fax: 847-803-5454  
www.chicagofaucets.com

**REPAIR PARTS**

FITTING NO.

**952-269CP**

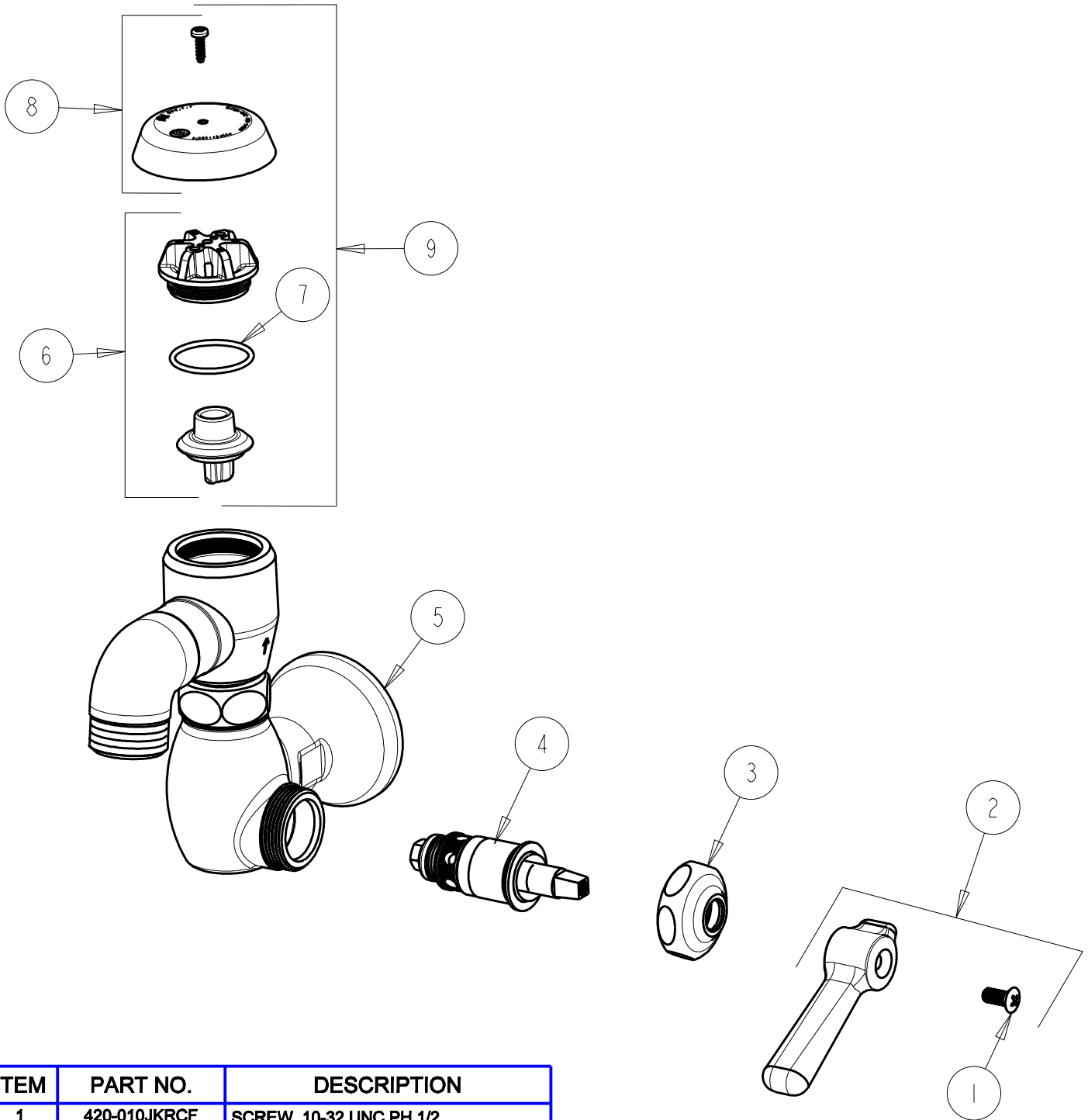
SUBMITTED MODEL NO.

ITEM NO.

**FOR TECHNICAL ASSISTANCE**  
1-800-TEC-TRUE (1-800-832-8783)

BY: SID DATE: 01-09-08

CHK: *[Signature]* REV: 08-20-12



ITEM	PART NO.	DESCRIPTION
1	420-010JKRCF	SCREW, 10-32 UNC PH 1/2
2	269-JKNF	HEAT RESISTANT LEVER HANDLE
3	1-214JKCP	CAP
4	217-XTLHJKNF	CARTRIDGE, SLO-COMPRESSION (LH)
5	---	VALVE BODY (NOT SOLD SEPARATELY)
6	892-302KJKNF	VACUUM BREAKER REPAIR KIT
7	80-007JKNF	O RING 0.989 X .070
8	892-254JKCP	VACUUM BREAKER COVER w/SCREW
9	892-402KJKNF	KIT, VACUUM BREAKER ASSEMBLY