

**CHICAGO FAUCETS**  
a Geberit company

2100 South Clearwater Drive  
Des Plaines, IL 60018  
Phone: 847-803-5000  
Fax: 847-803-5454  
www.chicagofaucets.com

**REPAIR PARTS**

FITTING NO.

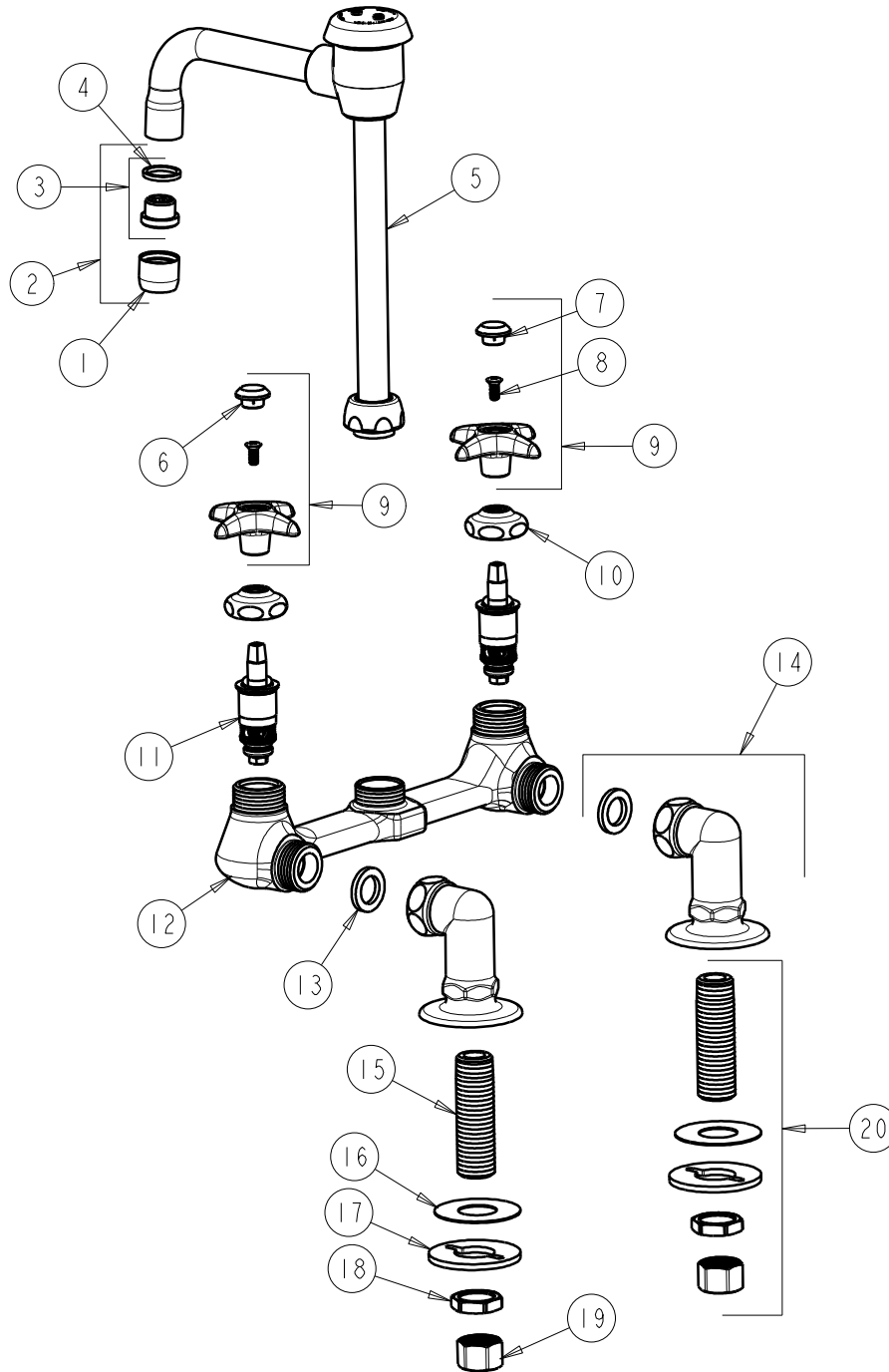
**947-E3-2CP**

SUBMITTED MODEL NO.

ITEM NO.

**FOR TECHNICAL ASSISTANCE**  
1-800-TEC-TRUE (1-800-832-8783)

BY: SID DATE: 11-20-02  
CHK: *[Signature]* REV: 06-01-09



ITEM	PART NO.	DESCRIPTION	ITEM	PART NO.	DESCRIPTION
1	E3JKCP	SOFTFLO AERATOR OUTLET	11	217-XTLHJKNF	CARTRIDGE, SLO-COMPRESSION
2	E3-2JKCP	SOFTFLO AERATOR WITH ADAPTER	12	—	VALVE BODY (NOT SOLD SEPARATELY)
3	K2JKRCF	ADAPTER	13	1-011JKNF	WASHER, .97 X .62 X .12
4	229-003JKNF	WASHER	14	SSJKCP	ANGLE SHANK ASSEMBLY w/ WASHER
5	GN2BVBJKCP	VACUUM BREAKER SWING SPOUT	15	748-002JKRBF	INLET SHANK 1/2-NPSM
6	216-178JKNF	BUTTON 'CW'	16	52-007JKNF	WASHER, RUBBER
7	216-128JKNF	BUTTON 'HW'	17	807-112JKNF	WASHER
8	420-010JKRCF	SCREW, 10-32 UNC PH 1/2	18	49-004JKRBF	LOCKNUT
9	204-PRJKCP	HANDLE ASSEMBLY (PAIR)	19	49-005JKRBF	COUPLING NUT
10	1-214JKCP	CAP	20	748-002JKRBF	SHANK ASSEMBLY