



a Geberit company

2100 South Clearwater Drive
Des Plaines, IL 60018
Phone: 847-803-5000
Fax: 847-803-5454
www.chicagofaucets.com

REPAIR PARTS

BY: SID DATE: 10-21-14
CHK: *[Signature]* REV:

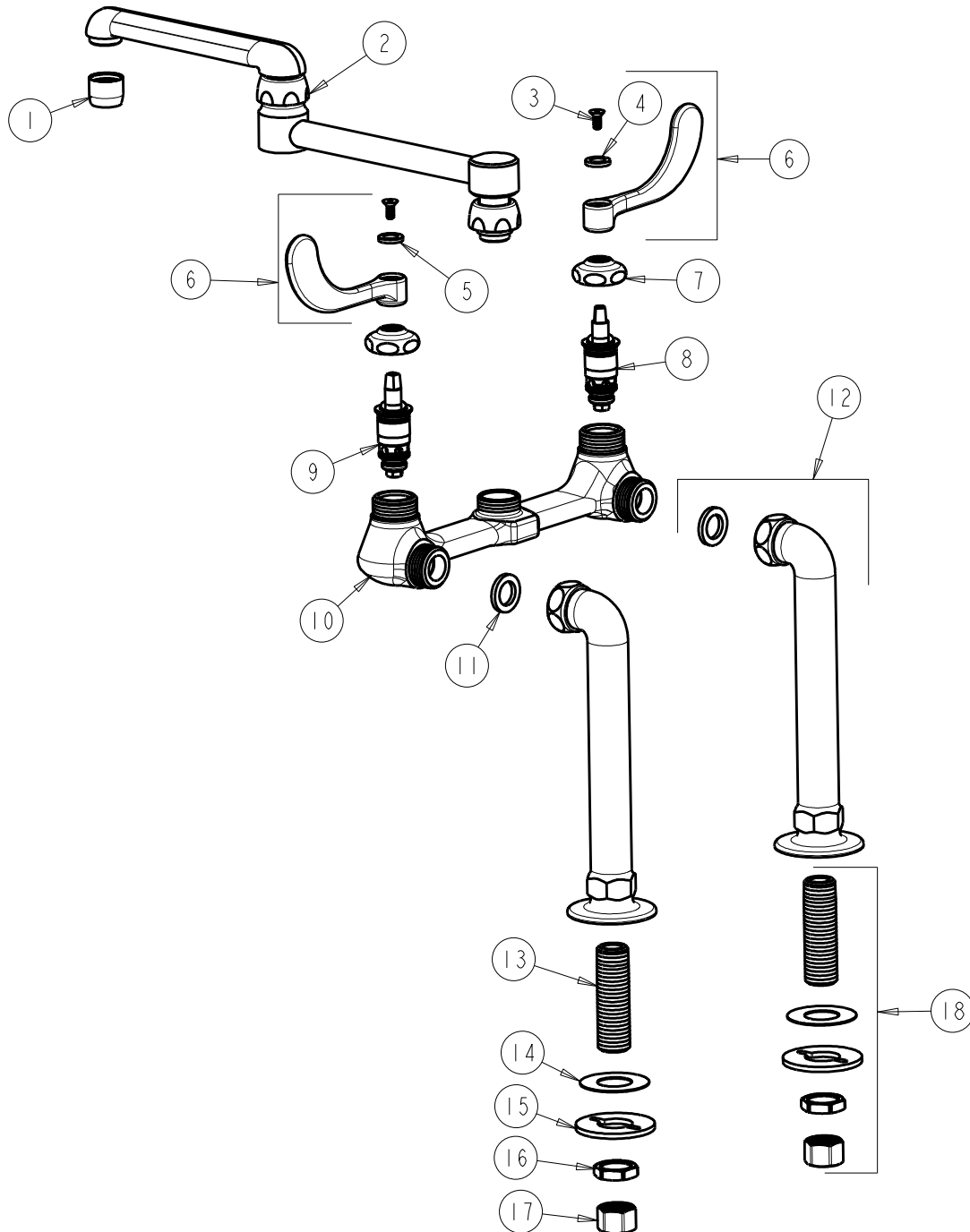
FITTING NO.

941-DJ13-317ABCP

SUBMITTED MODEL NO.

ITEM NO.

FOR TECHNICAL ASSISTANCE
1-800-TEC-TRUE (1-800-832-8783)



ITEM	PART NO.	DESCRIPTION	ITEM	PART NO.	DESCRIPTION
1	E3JKABCP	OUTLET, AERATOR 2.2 GPM	10	----	VALVE BODY (NOT SOLD SEPARATELY)
2	DJ13LEOJKAB	DOUBLE JOINTED SWING SPOUT	11	1-011JKABNF	WASHER, .97 X .62 X .12
3	420-020JKNF	SCREW, 1/8 FLAT HEX HEAD X 1/2	12	LSJKABCP	TALL ANGLE INLET SUPPLY ARM
4	633-023JKNF	INDEX BUTTON (RED)	13	748-002JKABRBF	INLET SHANK 1/2-NPSM
5	633-123JKNF	INDEX BUTTON (BLUE)	14	333-103JKNF	RUBBER WASHER
6	317-PRJKCP	HANDLE, 4" WRISTBLADE (PAIR)	15	807-112JKNF	WASHER
7	1-214JKCP	CAP	16	49-004JKRBF	LOCKNUT
8	1-100XTJKABNF	QUATURN CARTRIDGE (LH)	17	49-005JKRBF	COUPLING NUT
9	1-099XTJKABNF	QUATURN CARTRIDGE (RH)	18	748-002JKABRBF	SHANK ASSEMBLY