

CHICAGO FAUCETS®

a Geberit company

2100 South Clearwater Drive
Des Plaines, IL 60018
Phone: 847-803-5000
Fax: 847-803-5454
www.chicagofaucets.com

REPAIR PARTS

BY: JAR DATE: 01-16-13

CHK: *[Signature]* REV:

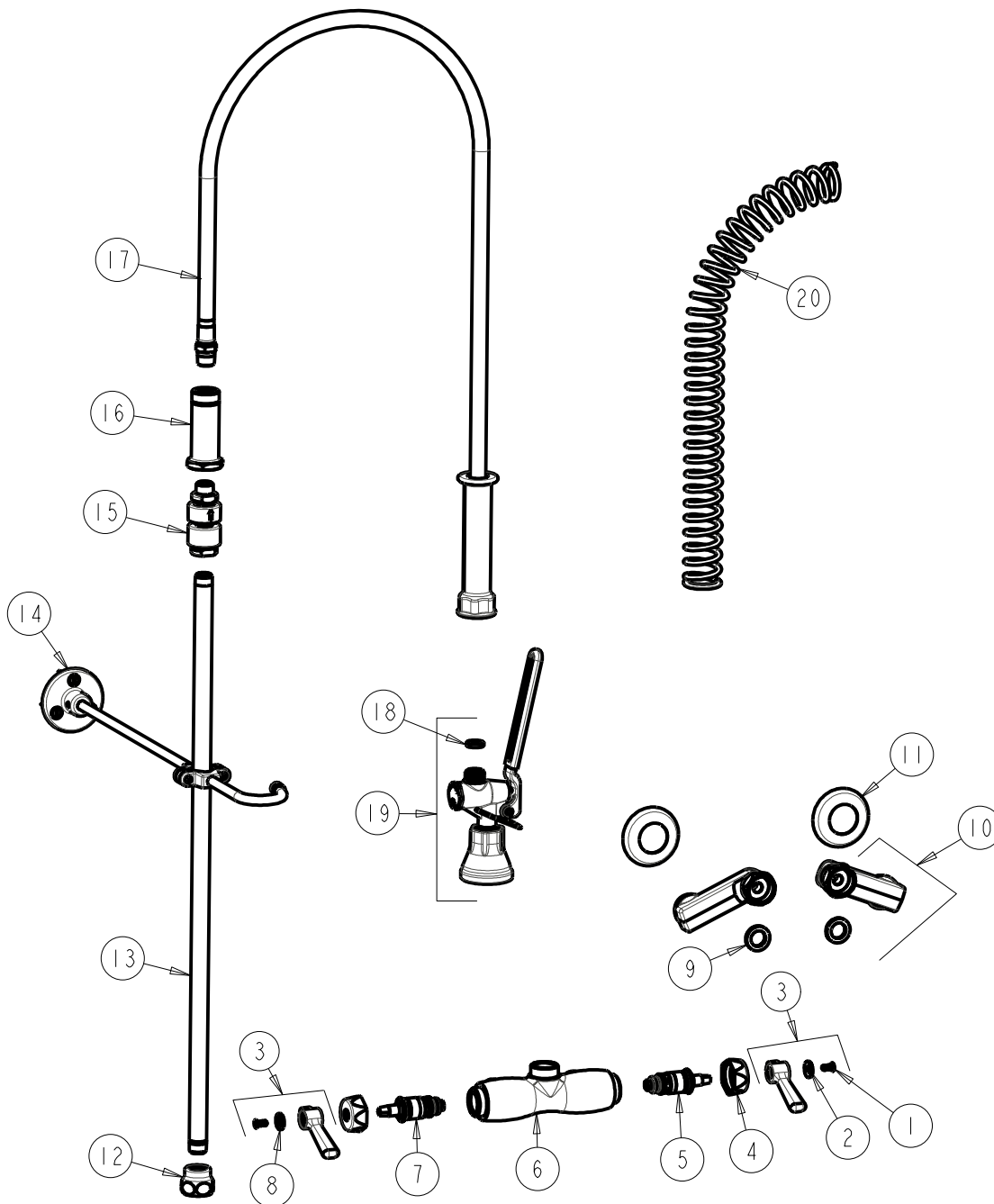
FITTING NO.

923-LVBABCP

SUBMITTED MODEL NO.

ITEM NO.

FOR TECHNICAL ASSISTANCE
1-800-TEC-TRUE (1-800-832-8783)



ITEM	PART NO.	DESCRIPTION	ITEM	PART NO.	DESCRIPTION
1	420-010JKRCF	SCREW, 10-32 UNC PH 1/2	11	1-055JKCP	FLANGE
2	633-123JKNF	INDEX BUTTON (BLUE)	12	BA2JKABCP	ADAPTER 3/8 NPT X 1 1/16-18 UNEF
3	369-PRJKCP	LEVER HANDLE ASSEMBLY (PAIR)	13	919-039JKABCP	3/8" NPT X 23" RISER
4	444-005JKCP	CAP	14	902-MHJKCP	PIPE STRAP AND HOOK ASSEMBLY
5	1-099XTJKABNF	QUATURN CARTRIDGE (RH)	15	E23JKABCP	BACK-FLOW PREVENTER
6	-----	VALVE BODY (NOT SOLD SEPARATELY)	16	919-038JKABCP	GUIDE SHANK
7	1-100XTJKABNF	QUATURN CARTRIDGE (LH)	17	83-44ABNF	44" HOSE AND HANDLE ASSEMBLY
8	633-023JKNF	INDEX BUTTON (RED)	18	919-243JKNF	GASKET, .685 X .375 X .125
9	1-011JKNF	WASHER, .97 X .62 X .12	19	90-LABCP	PRE-RINSE VALVE, LOW FLOW
10	HJKABCP	ARM ASSEMBLY w/WASHER	20	919-014JKCP	SPRING