

**CHICAGO FAUCETS**  
a Geberit company

2100 South Clearwater Drive  
Des Plaines, IL 60018  
Phone: 847-803-5000  
Fax: 847-803-5454  
www.chicagofaucets.com

**REPAIR PARTS**

FITTING NO.

**919-XXLCP**

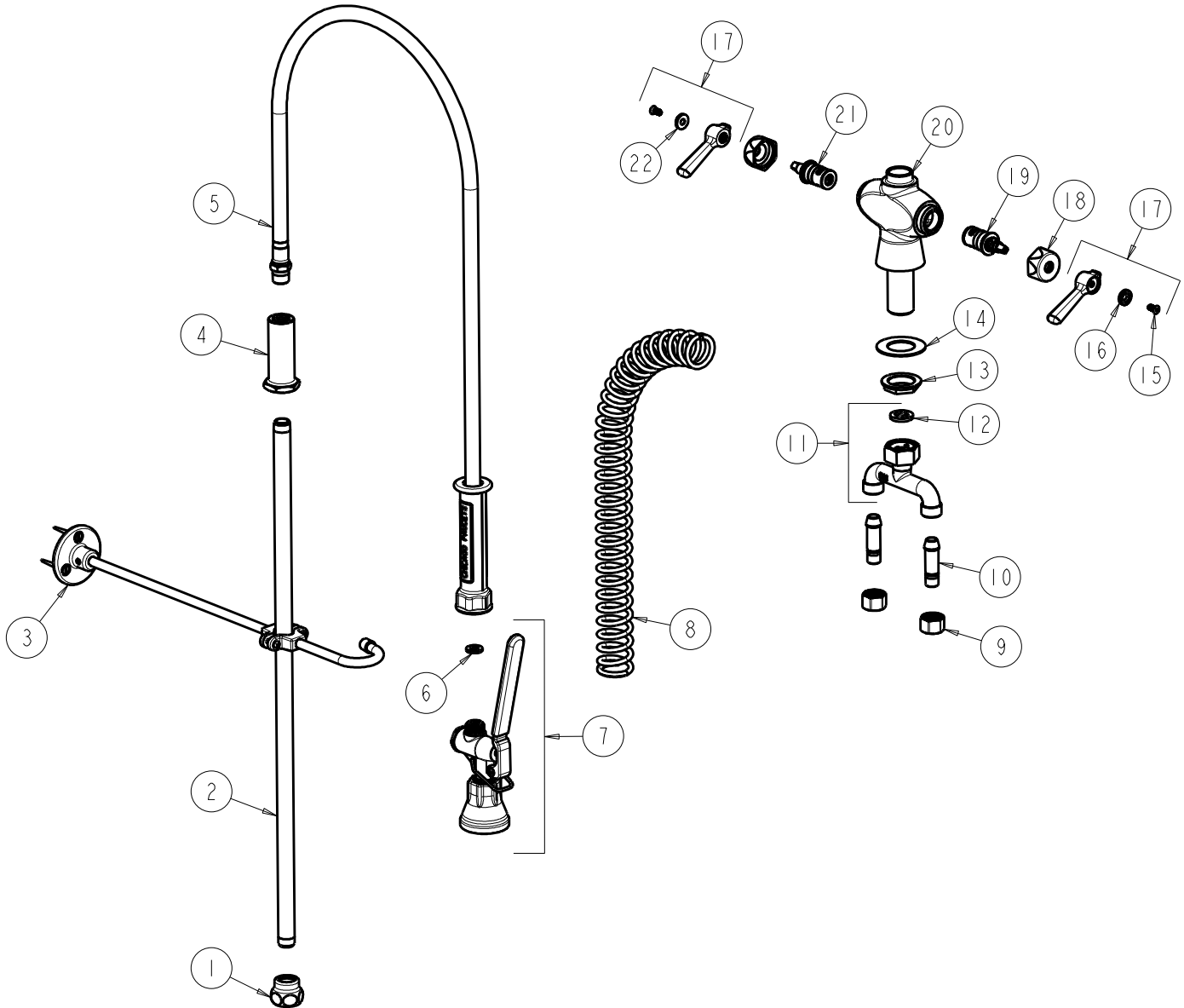
SUBMITTED MODEL NO.

ITEM NO.

**FOR TECHNICAL ASSISTANCE**  
1-800-TEC-TRUE (1-800-832-8783)

BY: JAR DATE: 05-10-06

CHK: *[Signature]* REV: 05-12-11



ITEM	PART NO.	DESCRIPTION	ITEM	PART NO.	DESCRIPTION
1	BA2JKCP	ADAPTER 3/8 NPT X 1 1/16-18 UNEF	12	50-008JKNF	RUBBER WASHER
2	919-039JKCP	3/8" NPT X 23" RISER	13	50-003JKRBF	LOCKNUT
3	902-MHJKCP	PIPE STRAP AND HOOK ASSEMBLY	14	50-014JKNF	STEEL WASHER
4	919-038JKCP	GUIDE SHANK	15	420-010JKRCF	SCREW, 10-32 UNC PH 1/2
5	83-44NF	44" HOSE AND HANDLE ASSEMBLY	16	633-123JKNF	INDEX BUTTON (BLUE)
6	919-243JKNF	GASKET, .67 X .35 X .09	17	369-PRJKCP	LEVER HANDLE ASSEMBLY (PAIR)
7	90-LABCP	PRE-RINSE VALVE, LOW FLOW	18	444-005JKCP	CAP
8	919-014JKCP	SPRING	19	1-099XKJKNF	RH CERAMIC CARTRIDGE 1/4
9	49-005JKRBF	COUPLING NUT	20	---	VALVE BODY NOT SOLD SEPARATELY
10	58-018KJKRBF	TAIL PIECE ASSEMBLY	21	1-100XKJKNF	LH CERAMIC CARTRIDGE 1/4
11	50-010KJKRBF	CONNECTION ASSEMBLY	22	633-023JKNF	INDEX BUTTON (RED)