

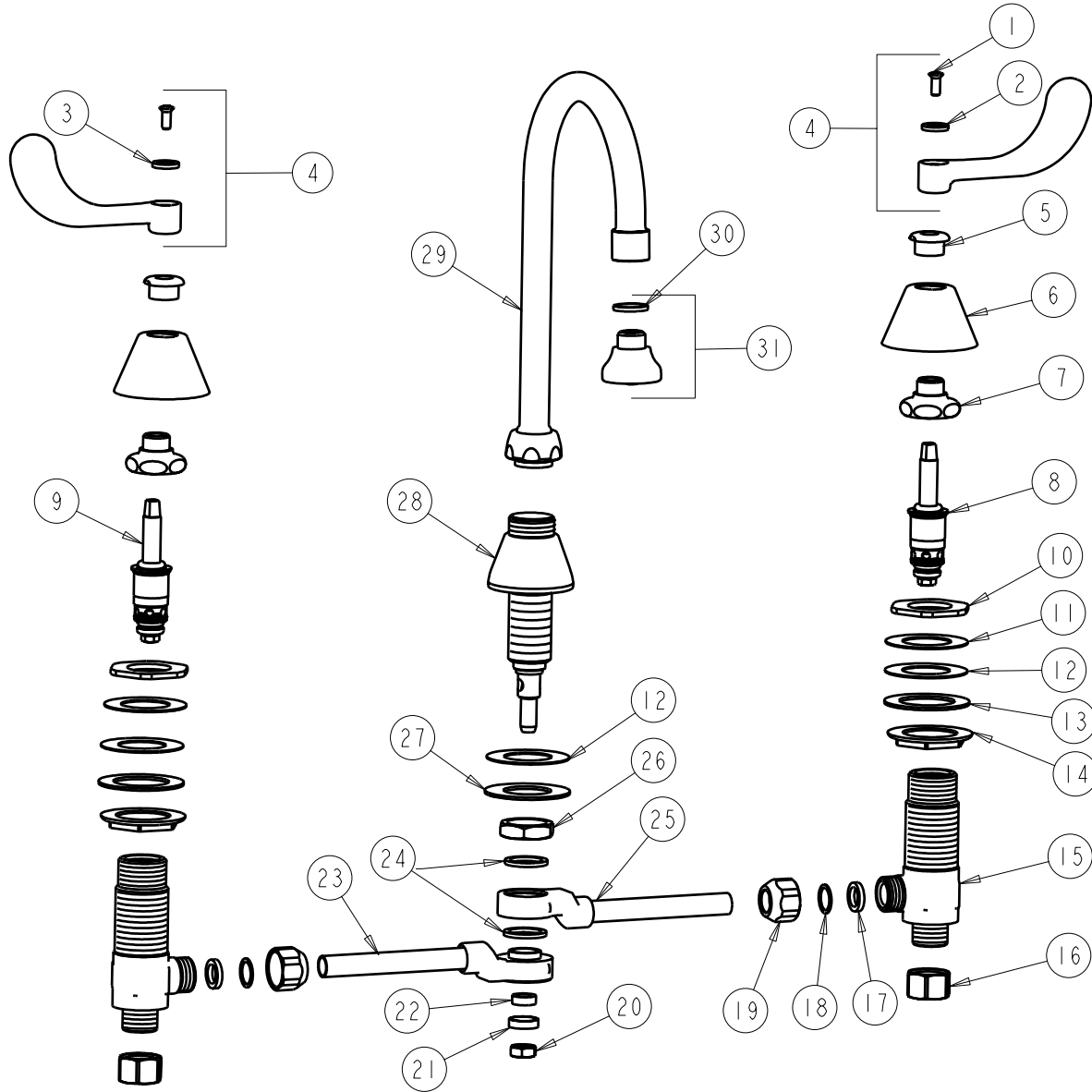
# PARTS LIST

BY: SID  
CHK'D: *[Signature]*



FINISH: AS SPECIFIED  
DATE: 10-24-01  
REV: 07-24-07

786-WC



| ITEM | PART NO.      | DESCRIPTION                       | ITEM | PART NO.      | DESCRIPTION            |
|------|---------------|-----------------------------------|------|---------------|------------------------|
| 1    | 420-010JKRCF  | SCREW, 10-32 UNC PH 1/2           | 17   | 200-010JKNF   | RUBBER WASHER          |
| 2    | 633-123JKNF   | INDEX BUTTON (BLUE)               | 18   | 250-027JKRBF  | BRASS WASHER           |
| 3    | 633-023JKNF   | INDEX BUTTON (RED)                | 19   | 49-031JKRBF   | COUPLING NUT           |
| 4    | 317-PRJKCP    | WRISTBLADE HANDLE ASSEMBLY (PAIR) | 20   | 689-113JKRBF  | LOCKNUT                |
| 5    | 422-113JKCP   | ESCUTCHEON NUT                    | 21   | 250-187JKRBF  | RETAINER               |
| 6    | 250-180JKCP   | ESCUTCHEON                        | 22   | 1797-129JKNF  | RUBBER WASHER          |
| 7    | 274-004JKRBF  | CAP NUT                           | 23   | 250-304KJKRBF | L.H. SWIVEL ASSEMBLY   |
| 8    | 377-XTRHJKNF  | RH QUATURN CARTRIDGE              | 24   | 250-200JKNF   | GASKET                 |
| 9    | 377-XTLHJKNF  | LH QUATURN CARTRIDGE              | 25   | 250-201KJKRBF | R.H. SWIVEL ASSEMBLY   |
| 10   | 308-003JKRBF  | LOCKNUT                           | 26   | 250-054JKRBF  | LOCKNUT                |
| 11   | 888-006JKRBF  | BRASS WASHER                      | 27   | 50-014JKNF    | STEEL WASHER           |
| 12   | 739-056JKNF   | RUBBER WASHER                     | 28   | 785-251KJKCP  | SPOUT BASE ASSEMBLY    |
| 13   | 55-010JKNF    | STEEL WASHER                      | 29   | GN2BJKCP      | FOR PARTS SEE GN2BJKCP |
| 14   | 250-004JKRBF  | LOCKNUT                           | 30   | 229-003JKNF   | WASHER                 |
| 15   | 250-094KJKRBF | VALVE BODY ASSEMBLY               | 31   | E4JKCP        | ROSE SPRAY OUTLET      |
| 16   | 49-005JKRBF   | COUPLING NUT                      |      |               |                        |