

CHICAGO FAUCETS
 a Geberit company

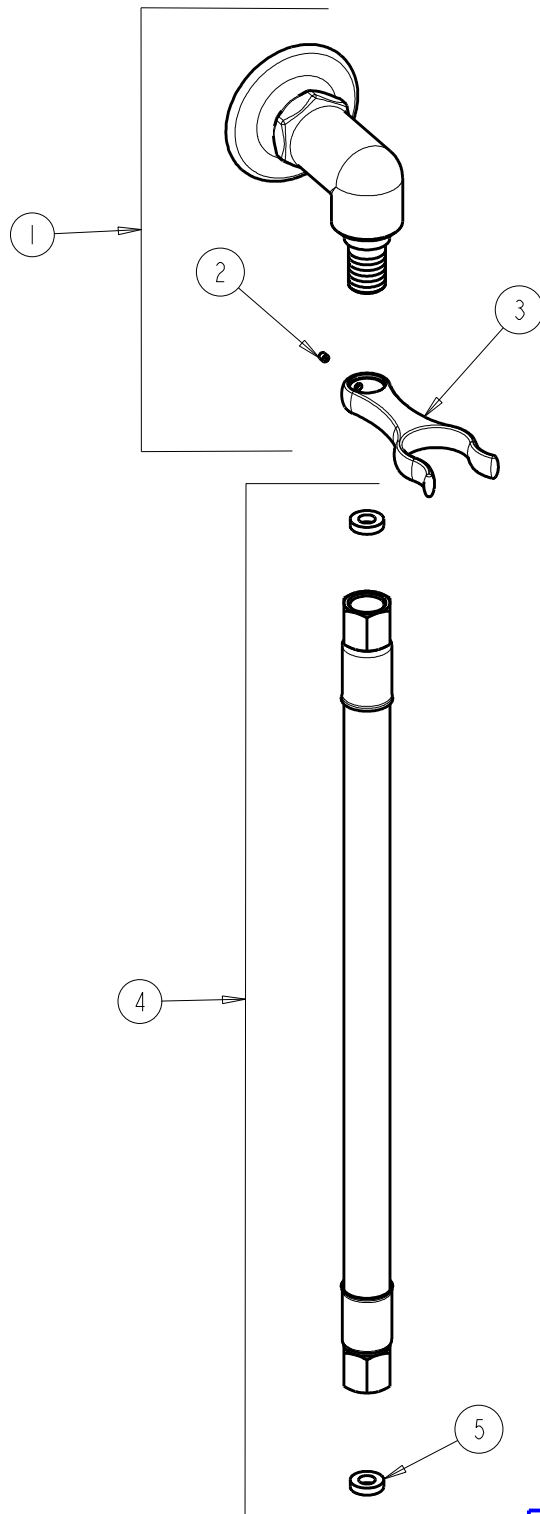
2100 South Clearwater Drive
 Des Plaines, IL 60018
 Phone: 847-803-5000
 Fax: 847-803-5454
 www.chicagofaucets.com

REPAIR PARTS

BY: SID DATE: 11-01-11
 CHK: *[Signature]* REV:

FITTING NO.
778-SLESSE21CP
SUBMITTED MODEL NO.
ITEM NO.

FOR TECHNICAL ASSISTANCE
 1-800-TEC-TRUE (1-800-832-8783)



ITEM	PART NO.	DESCRIPTION
1	777-033KJKCP	ANGLE SHANK ASSEMBLY
2	777-013JKNF	SCREW, SET 6-32 X 1/8
3	---	FORK (NOT SOLD SEPARATELY)
4	739-048KJKNF	4' WHITE VINYL HOSE ASSEMBLY
5	739-051JKNF	GASKET, 1/2 X 1/4 X 1/8