

CHICAGO FAUCETS
a Geberit company

2100 South Clearwater Drive
Des Plaines, IL 60018
Phone: 847-803-5000
Fax: 847-803-5454
www.chicagofaucets.com

REPAIR PARTS

FITTING NO.

770-PRCP

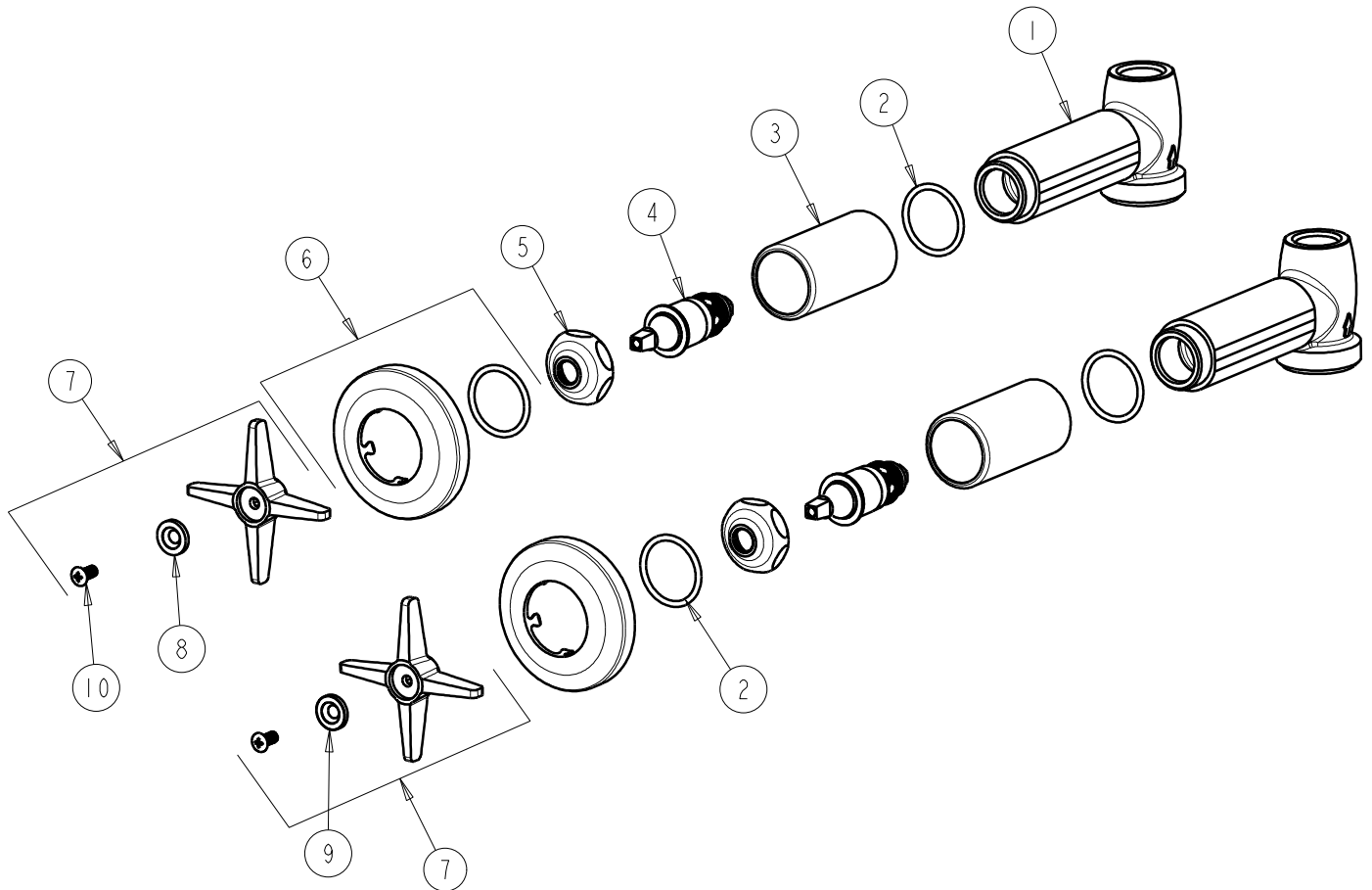
SUBMITTED MODEL NO.

ITEM NO.

BY: SID DATE: 10-08-09

CHK: *[Signature]* REV:

FOR TECHNICAL ASSISTANCE
1-800-TEC-TRUE (1-800-832-8783)



ITEM	PART NO.	DESCRIPTION
1	---	VALVE BODY (NOT SOLD SEPARATELY)
2	5235-107JKNF	O-RING
3	5235-106JKCP	SLEEVE
4	217-XTLHJKNF	CARTRIDGE, SLO-COMPRESSION
5	1-214JKCP	CAP
6	633-201JKCP	FLANGE & O-RING
7	633-PRJKCP	4-ARM HANDLE ASSEMBLY
8	633-023JKNF	INDEX BUTTON (RED)
9	633-123JKNF	INDEX BUTTON (BLUE)
10	420-010JKRCF	SCREW, 10-32 UNC PH 1/2