

CHICAGO FAUCETS
 a Geberit company

2100 South Clearwater Drive
 Des Plaines, IL 60018
 Phone: 847-803-5000
 Fax: 847-803-5454
 www.chicagofaucets.com

REPAIR PARTS

BY: SID DATE: 10-07-09
 CHK: *[Signature]* REV:

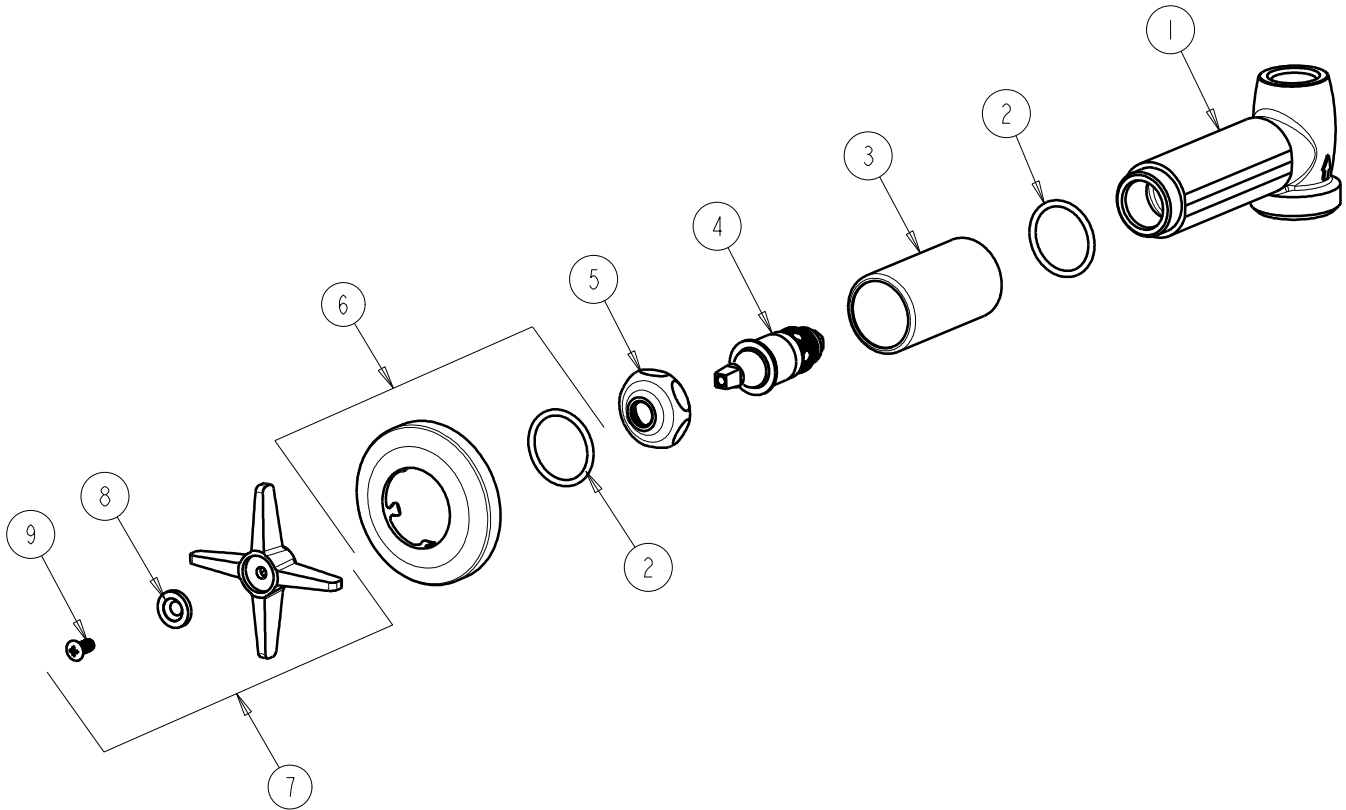
FITTING NO.

770-HOTCP

SUBMITTED MODEL NO.

ITEM NO.

FOR TECHNICAL ASSISTANCE
 1-800-TEC-TRUE (1-800-832-8783)



| ITEM | PART NO. | DESCRIPTION |
|------|--------------|----------------------------------|
| 1 | --- | VALVE BODY (NOT SOLD SEPARATELY) |
| 2 | 5235-107JKNF | O-RING |
| 3 | 5235-106JKCP | SLEEVE |
| 4 | 217-XTLHJKNF | CARTRIDGE, SLO-COMPRESSION |
| 5 | 1-214JKCP | CAP |
| 6 | 633-201JKCP | FLANGE & O-RING |
| 7 | 633-HOTJKCP | 4-ARM CROSS HANDLE ASSEMBLY |
| 8 | 633-023JKNF | INDEX BUTTON (RED) |
| 9 | 420-010JKRCF | SCREW, 10-32 UNC PH 1/2 |